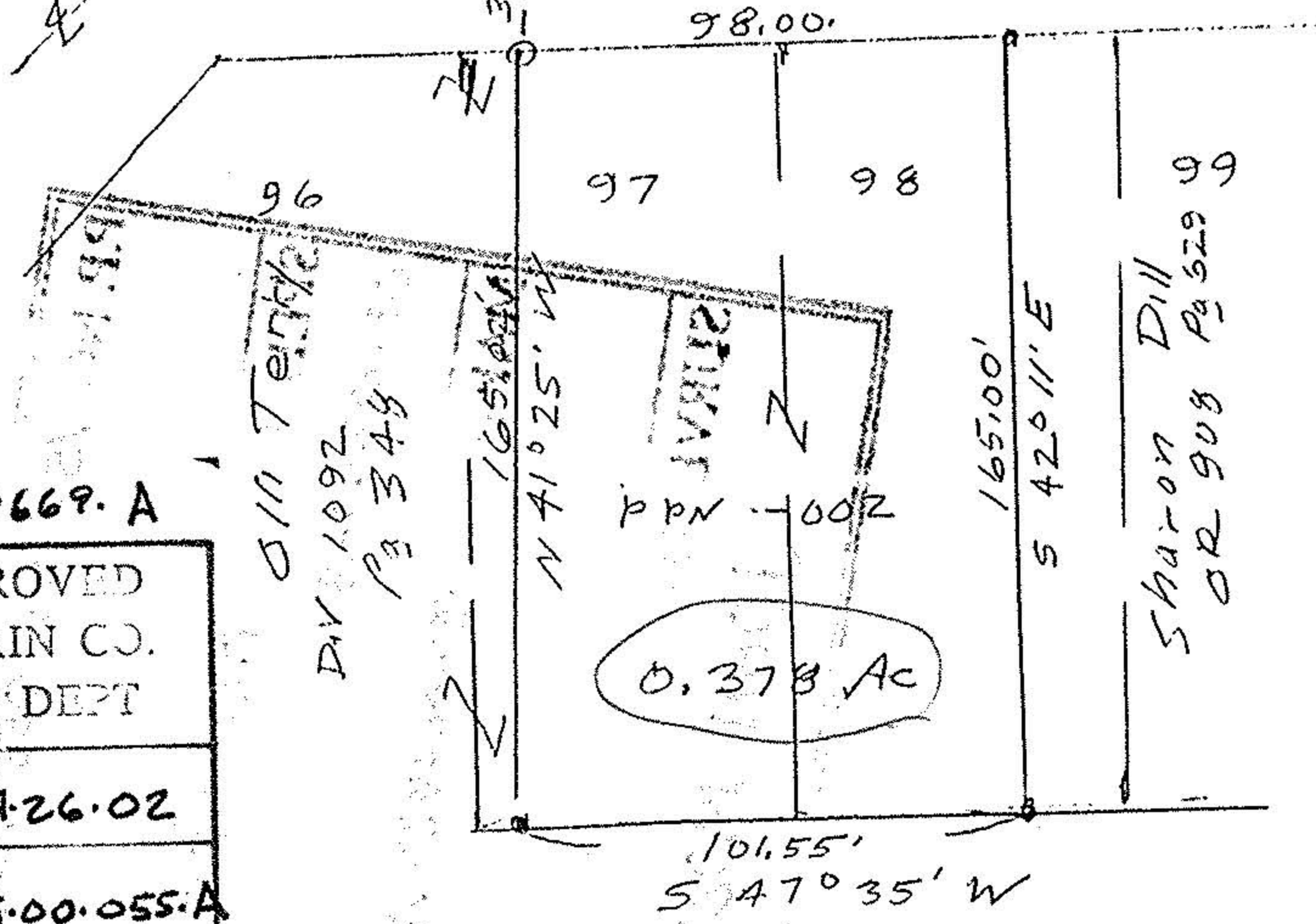


Center St
 71.94'
 33.0'
 N 47° 35' E
 Railroad St 66'



02.00669.A

APPROVED
 LORAIN CO.
 MAP DEPT
 DATE 4-26-02
 PAGE 15-00-055.A
 BY T. McMan
 02.00669.A

011 Teirke
 DIV 1092
 P 3348

Edward & Una M Duplaga
 OR 694 P 3210

Survey of PPN
 1500655104002
 parts of sublots 97, 98
 La Grange Village Plat
 Plat Vol 1 Pg 4
 Plat Vol 2 Pg 24
 Original La Grange Twp lot 55
 Lorain County Ohio
 Scale 1"=50 Jan 24, 02



Iron pipes for
 set