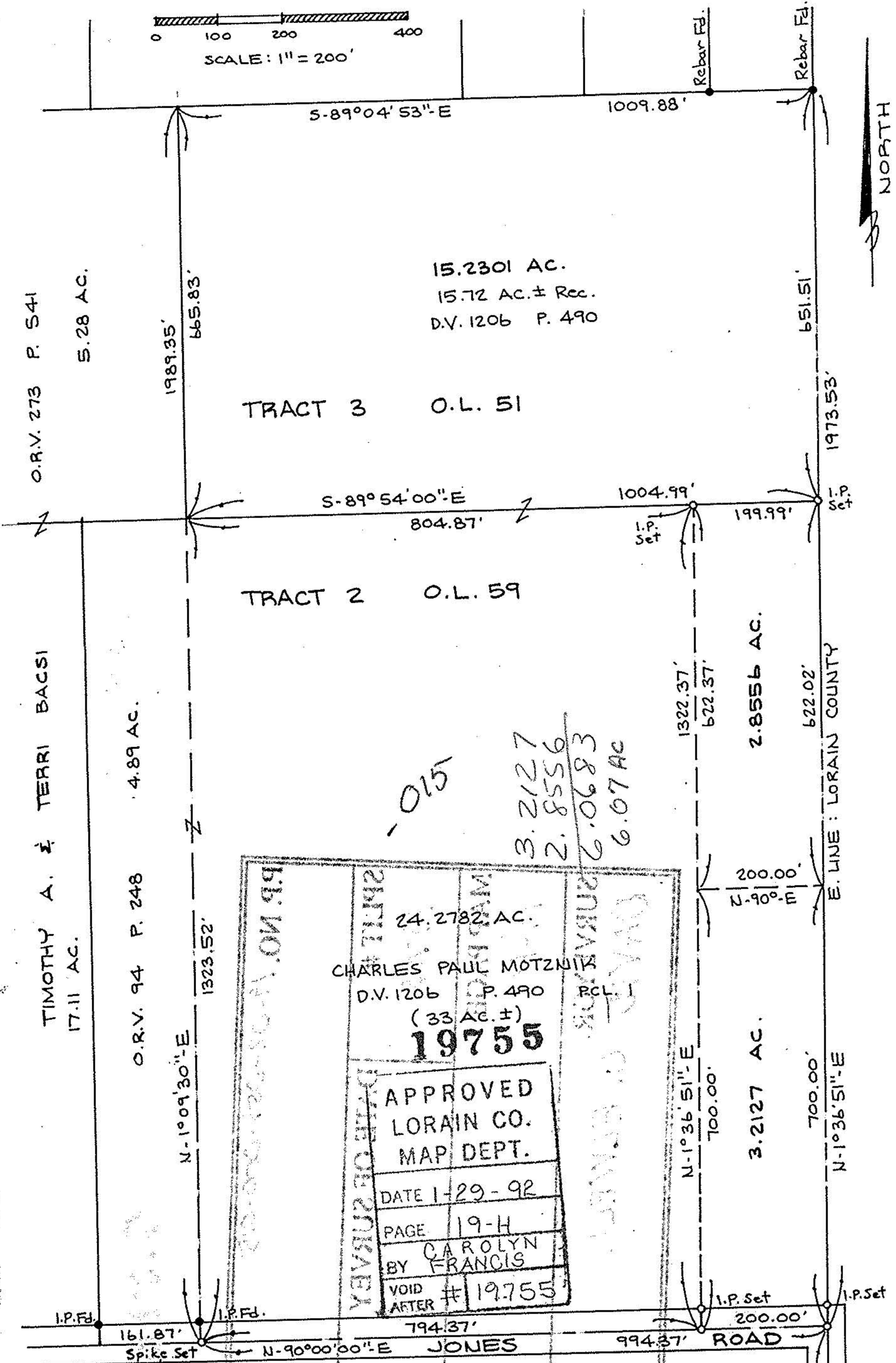
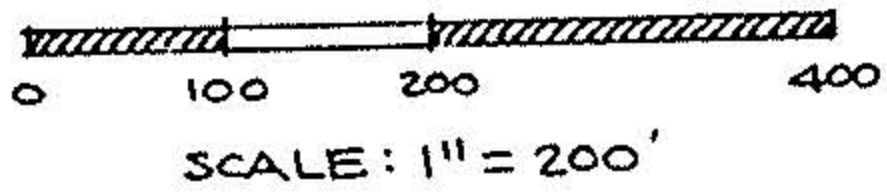


19-02-059-000-

19755

19-H



O.R.V. 273 P. 541

5.28 AC.

1989.35'

665.83'

S-89°04'53"-E

1009.88'

Rebar Fd.

Rebar Fd.

15.2301 AC.  
 15.72 AC. ± Rec.  
 D.V. 1206 P. 490

TRACT 3 O.L. 51

651.51'

1973.53'

S-89°54'00"-E

804.87'

1004.99'

199.99'

I.P. Set

I.P. Set

TRACT 2 O.L. 59

TIMOTHY A. & TERRI BACSI

17.11 AC.

4.89 AC.

1323.52'

O.R.V. 94 P. 248

N-1°09'30"-E

S-89°54'00"-E

804.87'

1004.99'

199.99'

I.P. Set

I.P. Set

TRACT 2 O.L. 59

622.02'

E. LINE: LORAIN COUNTY

-015

3.2127  
 2.8556  
 6.0683  
 6.07 AC

1322.37'

622.37'

2.8556 AC.

200.00'

N-90°-E

24.2782 AC.  
 CHARLES PAUL MOTZNIK  
 D.V. 1206 P. 490  
 (33 AC. ±)  
**19755**

APPROVED  
 LORAIN CO.  
 MAP DEPT.  
 DATE 1-29-92  
 PAGE 19-H  
 BY CAROLYN FRANCIS  
 VOID AFTER # 19.755

N-1°36'51"-E

700.00'

3.2127 AC.

700.00'

N-1°36'51"-E

I.P. Fd.

161.87'

Spike Set

I.P. Fd.

794.37'

N-90°00'00"-E JONES

994.37'

ROAD

I.P. Set

200.00'

I.P. Set

### BOUNDARY SURVEY

PART OF PENFIELD TOWNSHIP  
 ORIGINAL LOT 59 TRACT 3  
 TOWNSHIP OF PENFIELD  
 COUNTY OF LORAIN  
 STATE OF OHIO

PREPARED BY:  
**KS ASSOCIATES INC.**  
 ENGINEERS SURVEYORS

*David L. Elwell*  
 REG. SURV. NO. 6333  
 NOV. 22, 1991



1617.39'

X-X-X FENCE