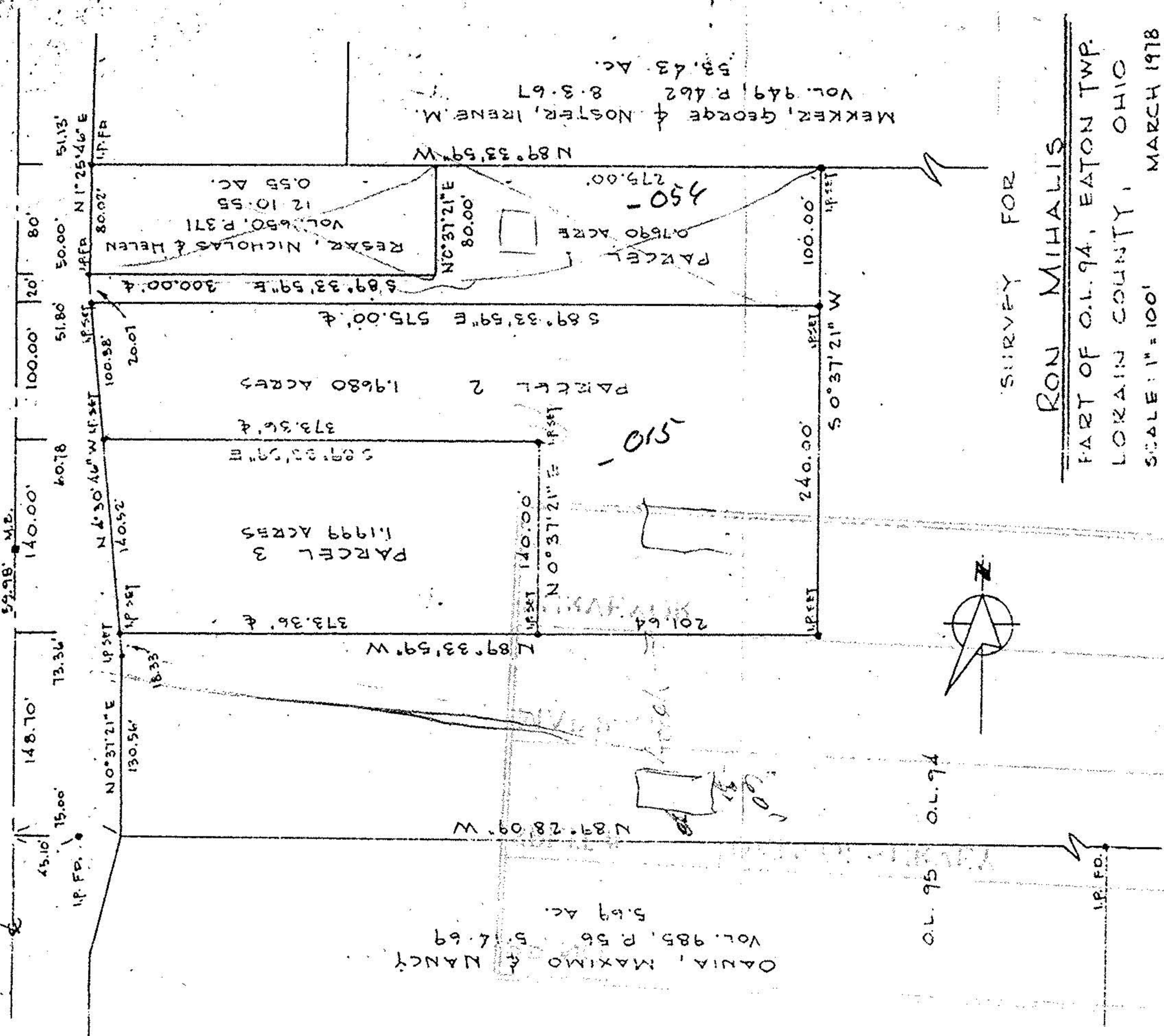


ELYRIA - MEDINA ROAD

57

N 0° 37' 21" E
59.98' M.P.



OPALIA, MAXIMO & NANCY
VOL. 985, P. 56 5.69 AC.

MEKKEZ, GEORGE & NOSTER, IRENE M.
VOL. 949, P. 462 8.3.67
53.43 AC.

RESAR, NICHOLAS & HELEN
VOL. 650, P. 371 12.10.55
0.55 AC.

SURVEY FOR

RON MIHALIS

PART OF O.L. 94, EATON TWP.

LORAIN COUNTY, OHIO

SCALE: 1" = 100' MARCH 1978

LAUNCON · SIMON · CAHL & ASSOC.
ENGINEERS SURVEYORS
504 MIDDLE AVE., ELYRIA, OHIO

77-696

F.B. 118, PG. 73

MAR 20 1978