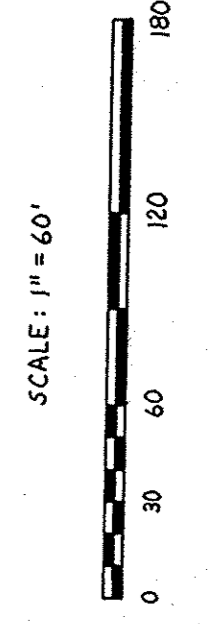


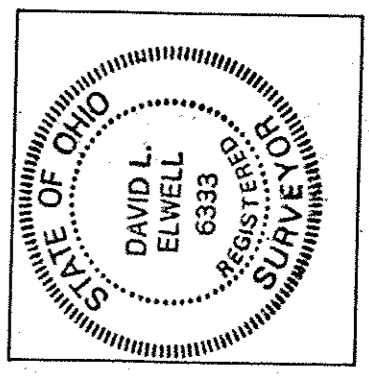
#19132
 APPROVED
 LORAIN CO.
 MAP DEPT.
 DATE 9-24-90
 BY [Signature]
 9/13/90

#19132
 APPROVED
 LORAIN CO.
 MAP DEPT.
 DATE 9-18-90
 PAGE 14-G
 BY CAROLYN FRANCIS
 VOID AFTER #19132

14-00-156-000



PREPARED BY:
 KS ASSOCIATES INC
 ENGINEERS SURVEYORS

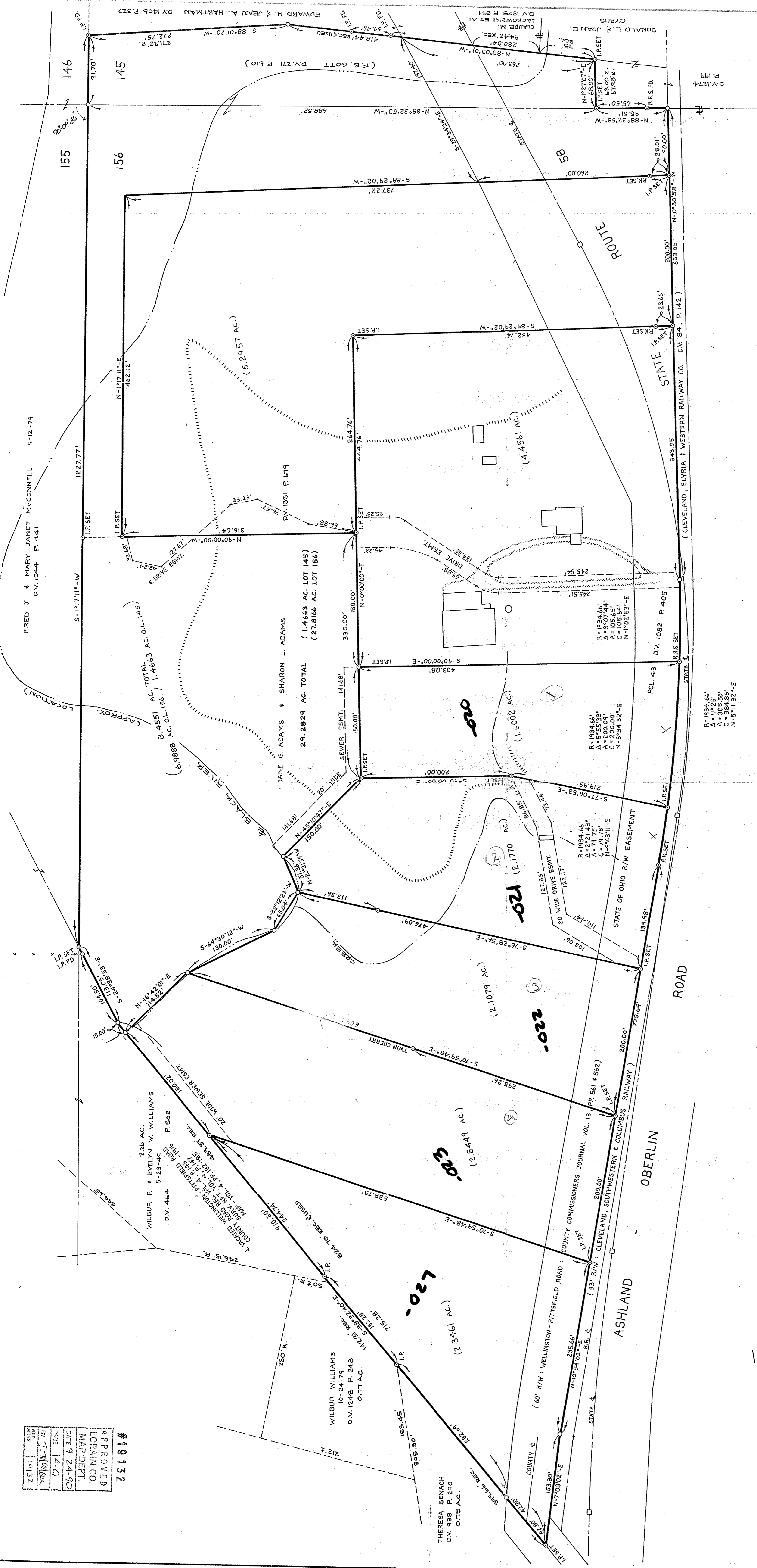


DAVID L. ELWELL
 REG. SURVEYOR NO. 6333
 REV. JULY 30, 1990

BOUNDARY SURVEY

PART OF
 PITTSFIELD TOWNSHIP ORIGINAL LOTS 145 & 156
 TOWNSHIP OF PITTSFIELD • COUNTY OF LORAIN • STATE OF OHIO

PP. NO. 14-00-156-000-020-000-021	DATE OF SURVEY
SPLIT #	MAP PAGE 14-G
SURVEYOR David L. Elwell	



R=1934.66'
 A=11°25'
 C=385.50'
 N-S'91°32'-E

R=1934.66'
 A=5°55'33"
 A=200.00'
 C=79.75'
 N-S'94°31'-E

R=1934.66'
 A=2°21'43"
 C=79.75'
 N-S'94°31'-E

R=1934.66'
 A=3°07'44"
 A=200.00'
 N-S'94°31'-E

R=1934.66'
 A=1°46'43"
 A=200.00'
 N-S'94°31'-E

R=1934.66'
 A=1°46'43"
 A=200.00'
 N-S'94°31'-E

R=1934.66'
 A=1°46'43"
 A=200.00'
 N-S'94°31'-E

R=1934.66'
 A=1°46'43"
 A=200.00'
 N-S'94°31'-E

R=1934.66'
 A=1°46'43"
 A=200.00'
 N-S'94°31'-E