

14-E  
O.L. 112

#16009

14-00-112-000-

Map of Part of O.L. 112 Pittsfield Twp. Lorain Co. Ohio  
scale 1" = 400'  
Aug. 21, 1984

Arnold F. Koopp Reg. Surveyor No. 4306

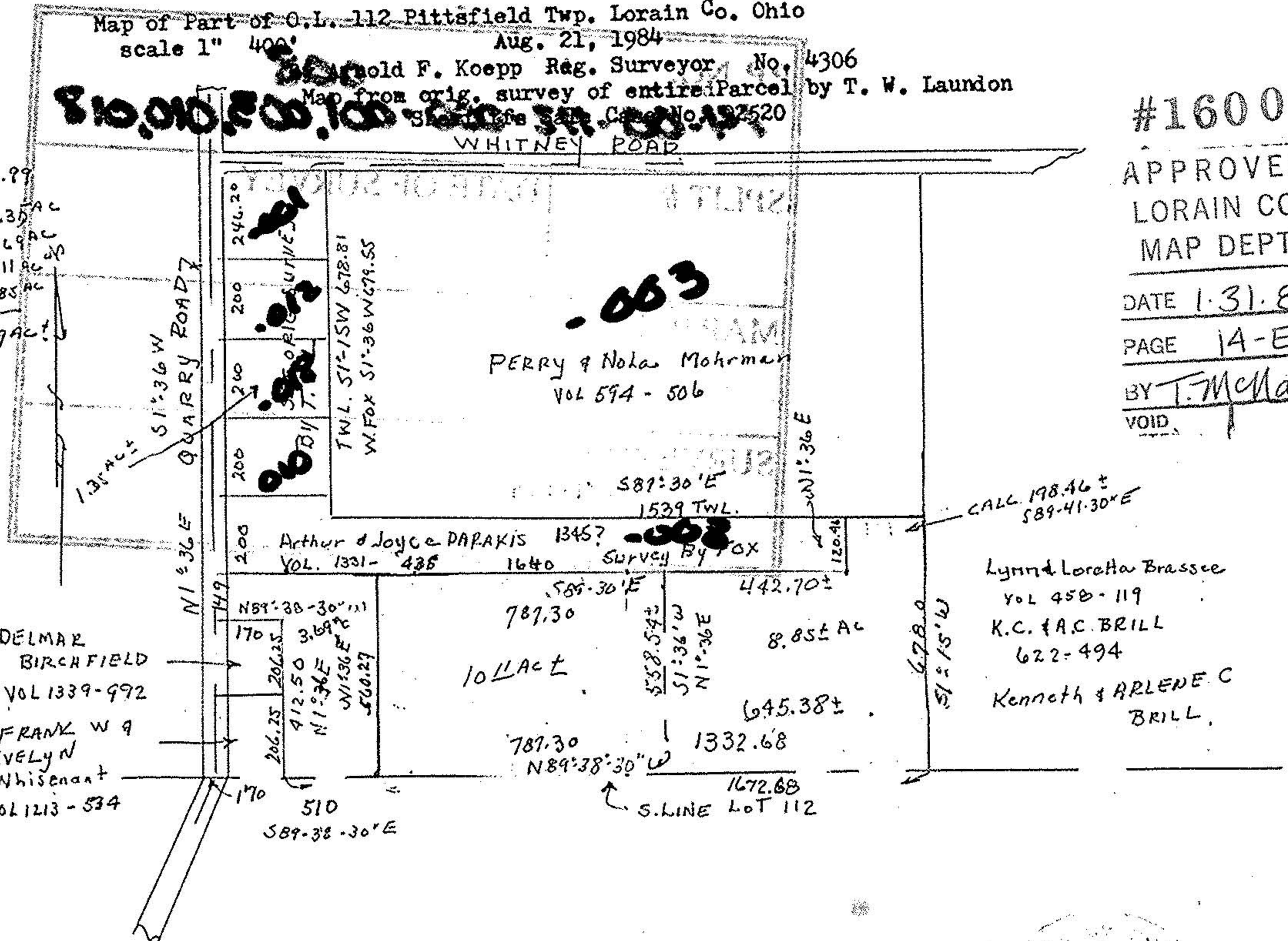
Map from orig. survey of entire Parcel by T. W. Laundon

Shelby's Case No. 2520

WHITNEY ROAD

Total ac Deed = 23.99  
PARCEL 200x295± = 1.35 AC  
3.69 AC  
10.11 AC  
8.85 AC  
23.99 AC±

1.35 AC±  
3.69 AC±  
10.11 AC±  
8.85 AC±  
23.99 AC±



#16009

APPROVED  
LORAIN CO.  
MAP DEPT.

DATE 1-31-85

PAGE 1A-E

BY T. McMain

VOID

