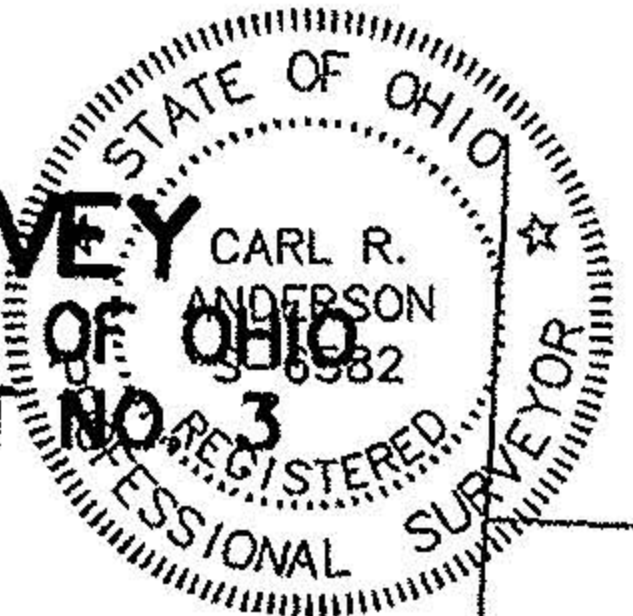


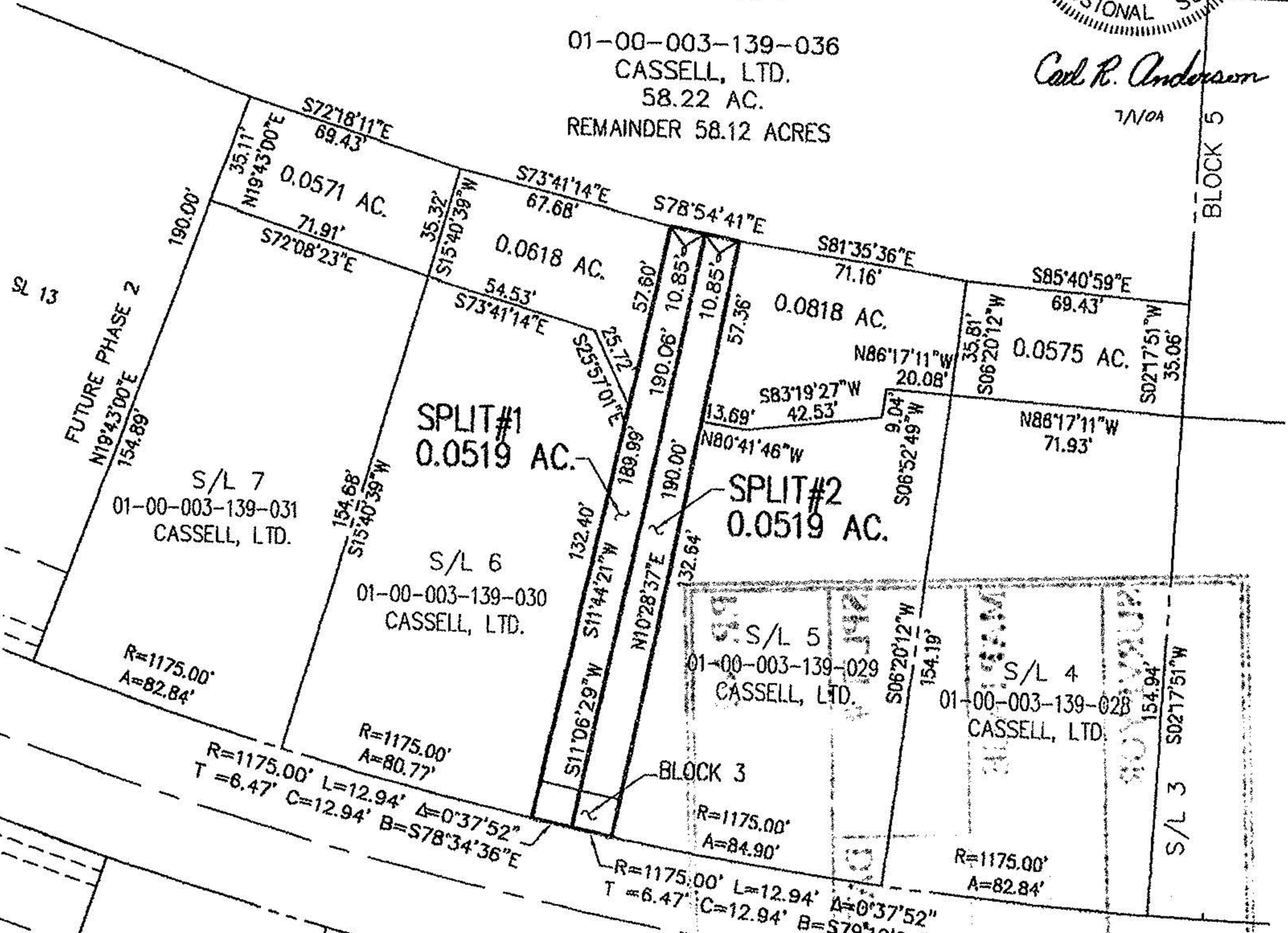
# BOUNDARY & LOT SPLIT SURVEY

CITY OF VERMILION ~ LORAIN COUNTY ~ STATE OF OHIO  
 PART OF ORIGINAL BROWNHELM TOWNSHIP LOT NO. 3  
 JULY 2004



01-00-003-139-036  
 CASSELL, LTD.  
 58.22 AC.  
 REMAINDER 58.12 ACRES

*Carl R. Anderson*  
 7/1/04



**HAYWOOD**  
 Civil Engineering & Land Surveying  
 "Committed to Service and Quality"

630 Cleveland Street Elyria, Ohio 44035  
 Office: (440) 385-9831 Fax: (440) 385-3426  
 www.haywoodcivilengineering.com

APPROVED LOCAL GOV. MAP DEPT
DATE 8/4/04
PAGE 01-00-003-C
BY <i>D. Holland</i>
404-01717



SCALE: 1 in. = 50 ft.