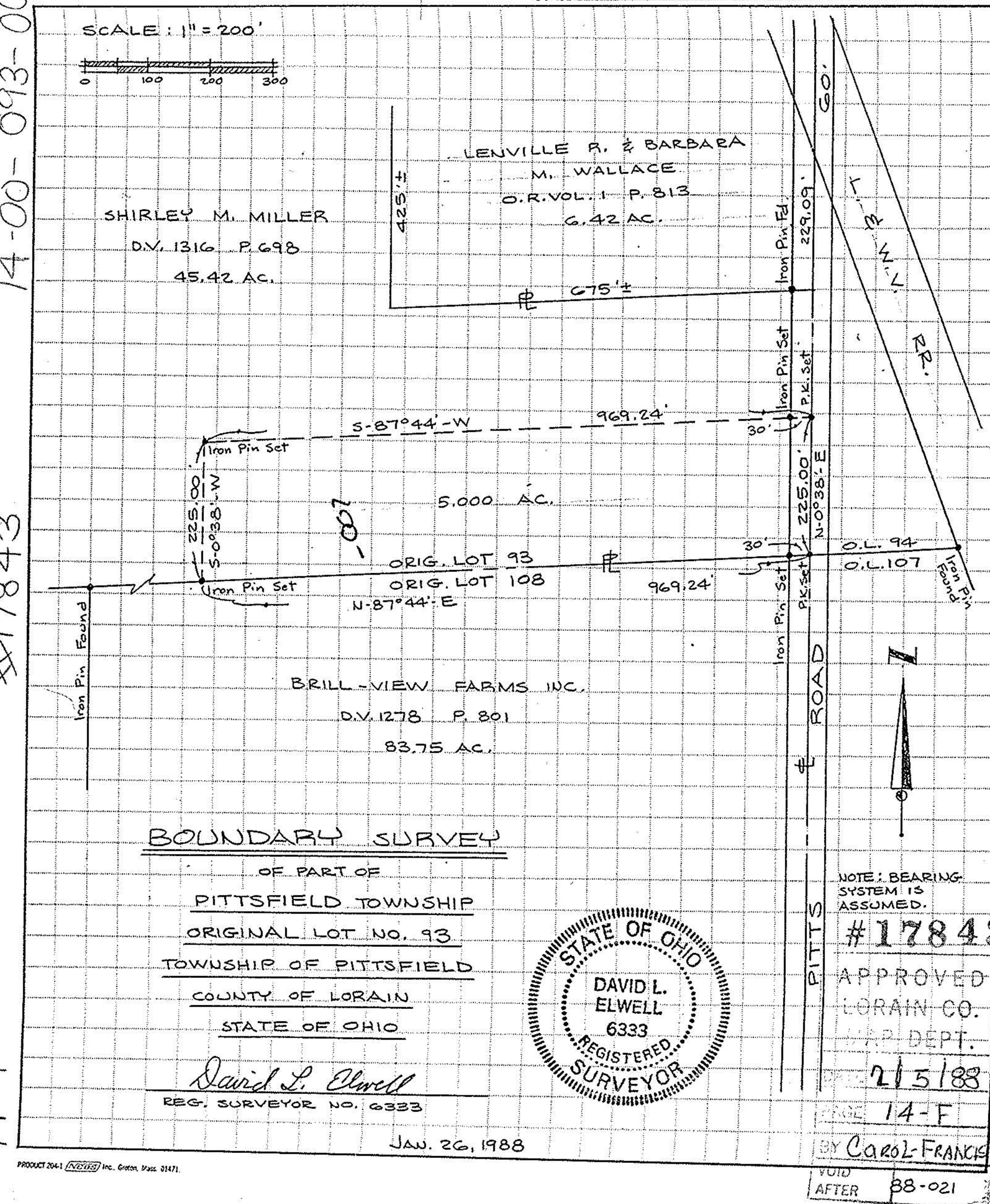
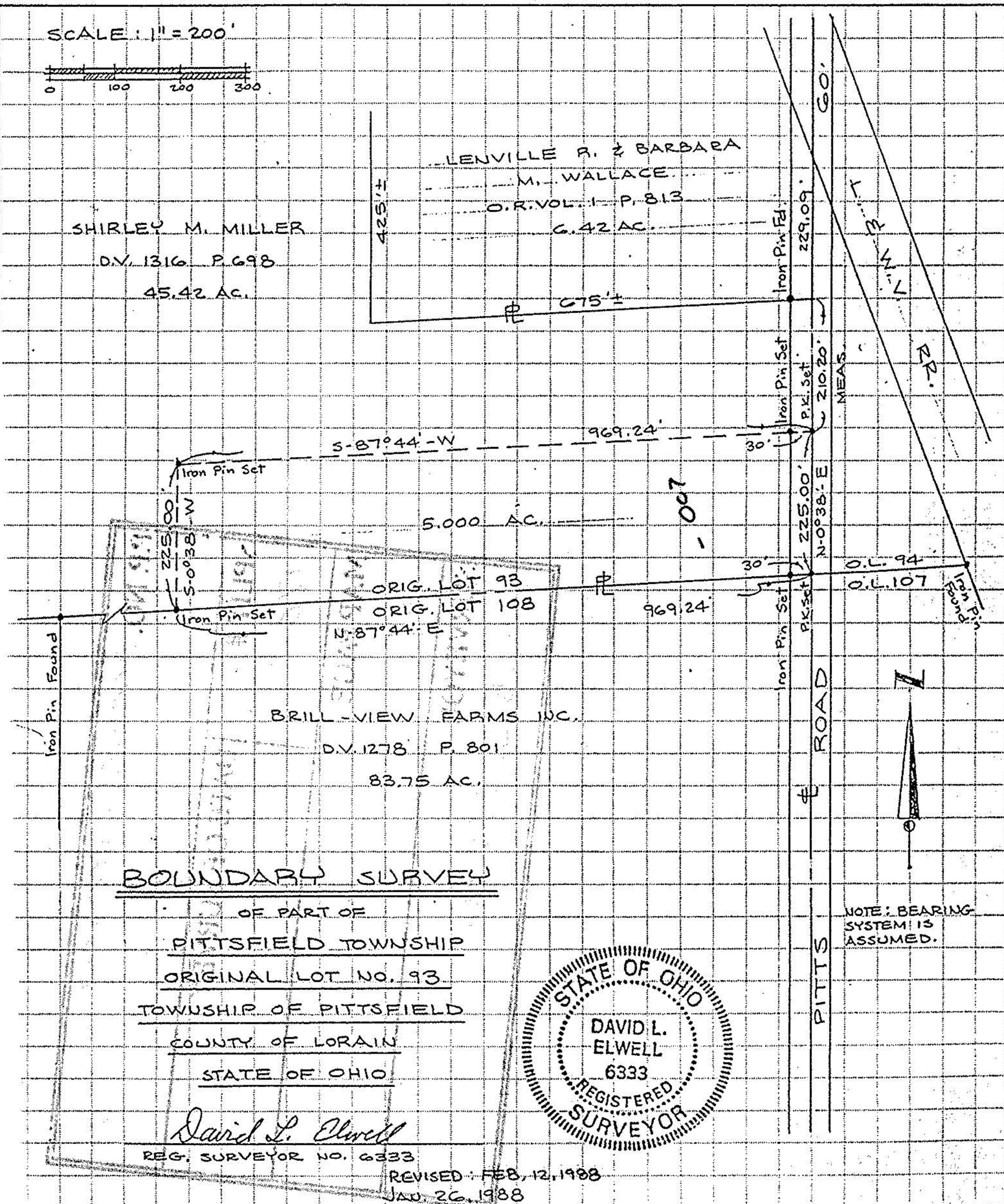


KS ASSOCIATES, INC.  
424 Middle Ave. P.O. Box 89  
ELYRIA, OHIO 44036  
(216) 322-6317

JOB 88-021 PITTS ROAD SURVEY  
SHEET NO. \_\_\_\_\_ OF \_\_\_\_\_  
CALCULATED BY \_\_\_\_\_ DATE \_\_\_\_\_  
CHECKED BY \_\_\_\_\_ DATE \_\_\_\_\_  
SCALE 1" = 200'

KS ASSOCIATES, INC.  
424 Middle Ave. P.O. Box 89  
ELYRIA, OHIO 44036  
(216) 322-6317

JOB 88-021 PITTS ROAD SURVEY  
SHEET NO. \_\_\_\_\_ OF \_\_\_\_\_  
CALCULATED BY \_\_\_\_\_ DATE \_\_\_\_\_  
CHECKED BY \_\_\_\_\_ DATE \_\_\_\_\_  
SCALE 1" = 200'



#17843

14-F

NOTE: BEARING SYSTEM IS ASSUMED.

#17843

APPROVED  
LORAIN CO.  
MAP DEPT.  
2/5/88

PAGE 14-F

BY Carol-Franck

VOID AFTER 88-021