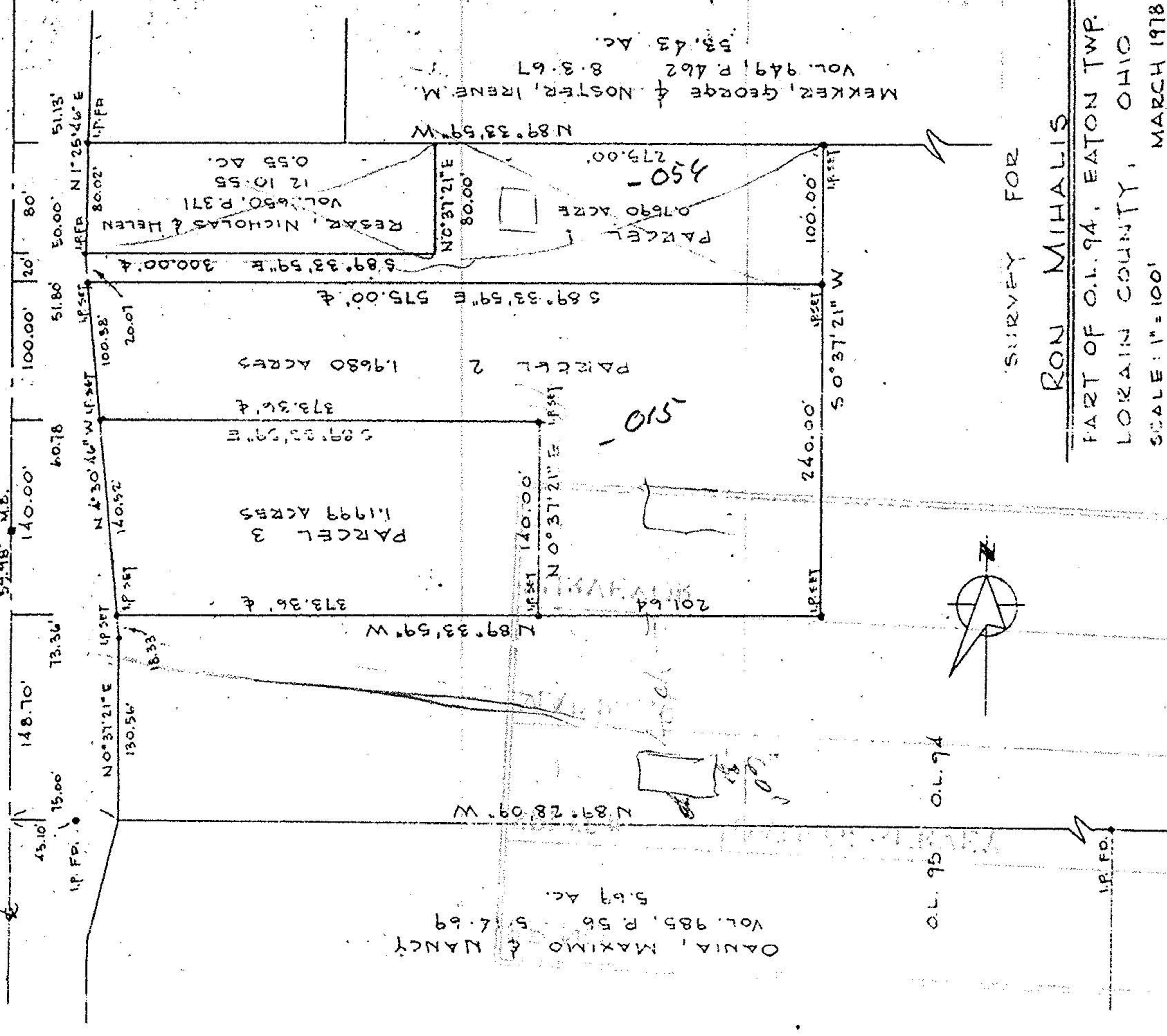


ELYRIA - MEDINA ROAD

57

N 0° 37' 21" E
59.98' M.B.



SURVEY FOR

RON MIHALIS

PART OF O.L. 94, EATON TWP.

LORAIN COUNTY, OHIO

SCALE: 1" = 100' MARCH 1978

LAUNCON · SIMON · CAHL & ASSOC.
ENGINEERS SURVEYORS
504 MIDDLE AVE., ELYRIA, OHIO

77-696

MAR 20 1978

F.B. 118, PG. 73

DANIA, MAXIMO & NANCY
VOL. 985, P. 56 5.4.69
5.69 AC.

N 89° 33' 59" W

MEKKEZ, GEORGE & NOSTER, IRENE M.
VOL. 949, P. 462 8.3.67
53.43 AC.

RESAR, NICHOLAS & HELEN
VOL. 650, P. 371
12 10.55
0.55 AC.

PARCEL 1
0.7690 ACRES
275.00'

PARCEL 2
1.9680 ACRES
589° 33' 59" E 575.00' &
589° 33' 59" E 575.00' &

PARCEL 3
1.1999 ACRES
373.36' &
373.36' &
N 0° 37' 21" E 140.00'

201.64
N 0° 37' 21" E 140.00'

140.52
N 4° 30' 40" W 140.52'

140.00'

148.70'

130.56'

140.00'

148.70'

15.00'

73.36'

100.00'

51.80'

50.00'

80'

51.13'

80.02'

51.13'