

COUNTY OF LORAIN
D.V. 1002 P. 140
(JOSEPH & FEISS CO.)

INV. SAN. M.H. 696 31
AS PER CITY PLANS

KEEP COURT

CURVE A
R = 85.00' Δ = 45° 11' 47"
A = 67.05' C = 65.33'
C.B. = N-65° 34' 39" - W

CURVE B
R = 85.00' Δ = 28° 06' 25"
A = 41.70' C = 41.28'
C.B. = N-57° 01' 59" - W

CURVE C
R = 85.00' Δ = 17° 05' 22"
A = 25.35' C = 25.26'
C.B. = N-79° 37' 52" - W

BELMONT PROPERTIES INC.
D.V. 1089 P. 620

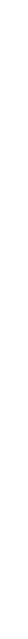
1.370 AC. TOTAL PARCEL
0.261 AC. WITHIN 60' EASEMENT

WOODED AREA

06-23-014-000-028

6-26

NOTE: ADD 700.00 TO ALL ELEV. SHOWN

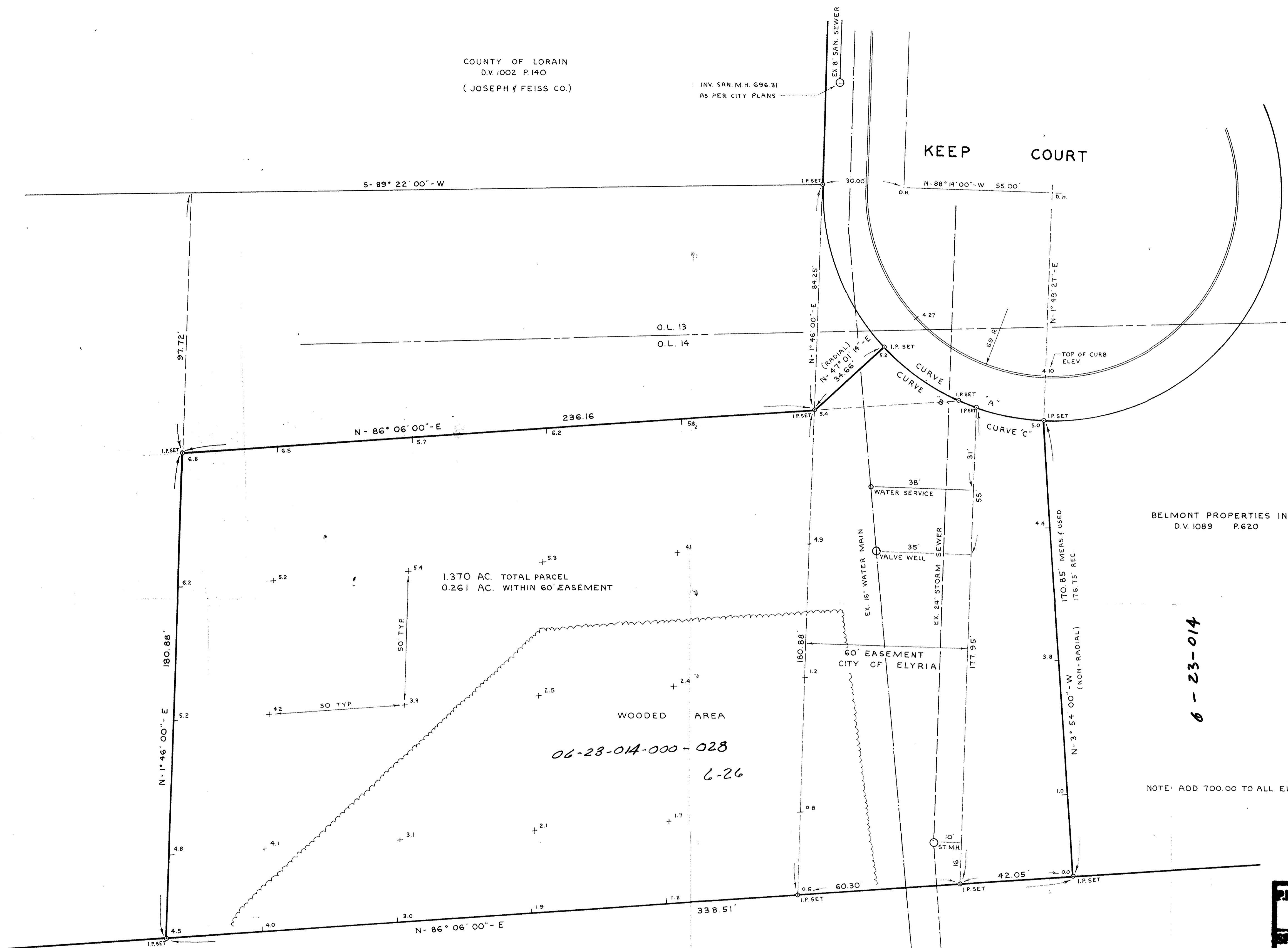


10-066
6-26
06-23-014
6-26
2-2-78

6-23-014

06-23-014

P.P. NO. 06-23-014-000-028	
SPLIT #	DATE OF SURVEY 9-14-76
MAP PAGE 6-26	
SURVEYOR K.S.A.	



No.	Date	Description	By
1	10-4-76	ADD UTILITY LOCATIONS	DLH
REVISIONS			

PROJECT
TOPOGRAPHICAL SURVEY
OF PART OF ORIGINAL ELYRIA TOWNSHIP LOT NO. 14 BRACE TRACT
CITY OF ELYRIA COUNTY OF LORAIN STATE OF OHIO

PREPARED FOR:
MILAN STEEL

Drawn by: DLH
Checked by:
App. by:
Scale: 1" = 20'
Date: 9-14-76

KLEINOEDER-SCHMIDT
and ASSOCIATES
ENGINEERS — SURVEYORS — CONSULTANTS in LAND PLANNING
ELYRIA - NORWALK - MEDINA OHIO

REFERENCES
72-264 76-35
SHEET NO. 1 of 1
JOB NO. 76-2