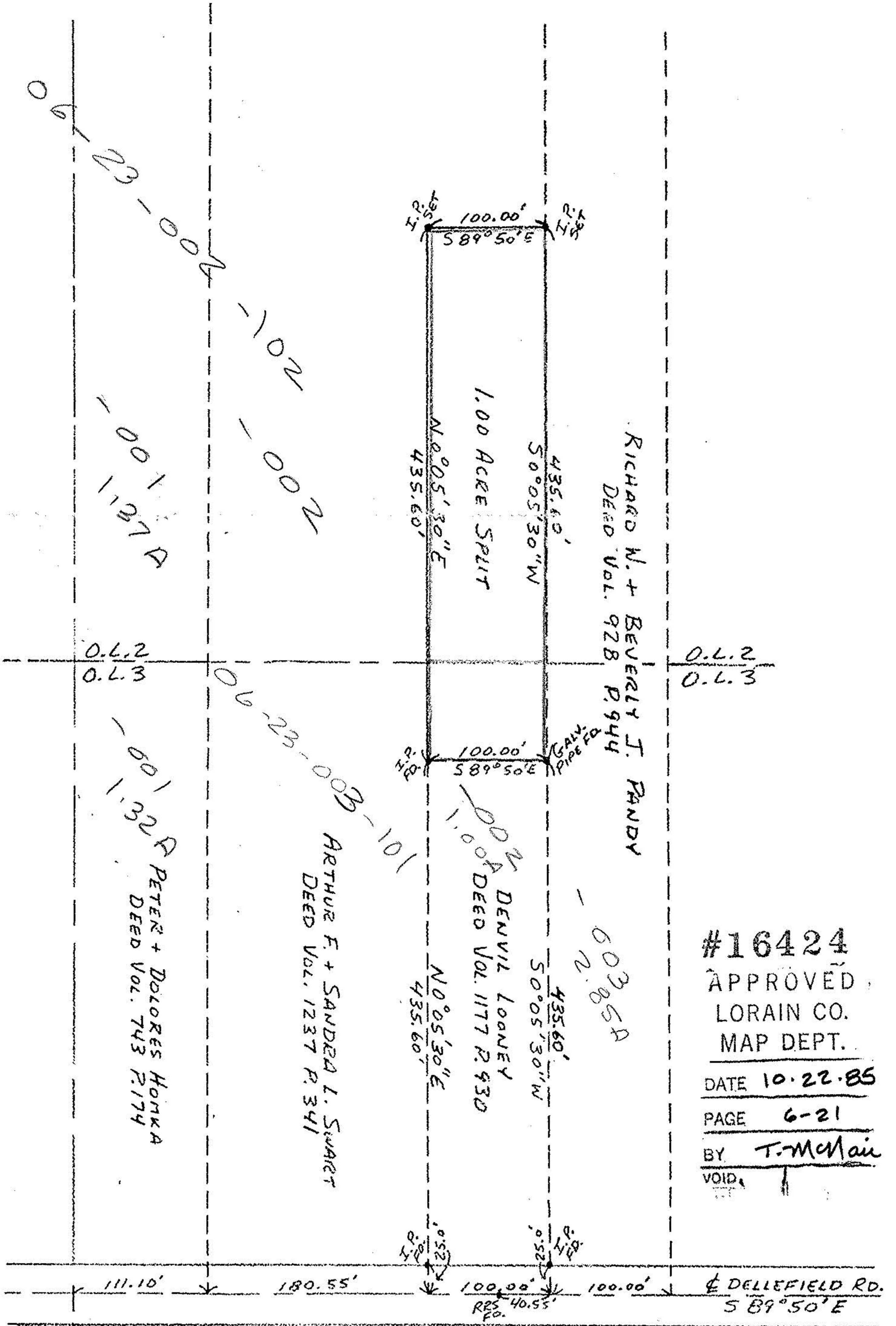


NORTH
SCALE 1"=100'



APPROVED BY THE LORAIN CITY PLANNING COMMISSION
COMMISSION 3-17-85
PLAT REQUIRED

APPROVED
AS TO DESCRIPTION ONLY
Date 10-16-85
City of Lorain
Per Donald E. Kuehn
Engineer, Jr.

#16424
APPROVED
LORAIN CO.
MAP DEPT.
DATE 10-22-85
PAGE 6-21
BY T. McMain
VOID

SURVEY OF 1.00 ACRE SPLIT FOR DEVIL LOANEY ELYRIA TWP. O.L. #2 + #3		DATE: 6/15/85	
APPROVED BY: <u>JRH</u>		DRAWN BY: <u>JRH</u>	
JOHN R. HAMILTON REG. SURV. #6861		REVISOR	
DRAWING NUMBER		DATE: 6/15/85	

JUNE 1985