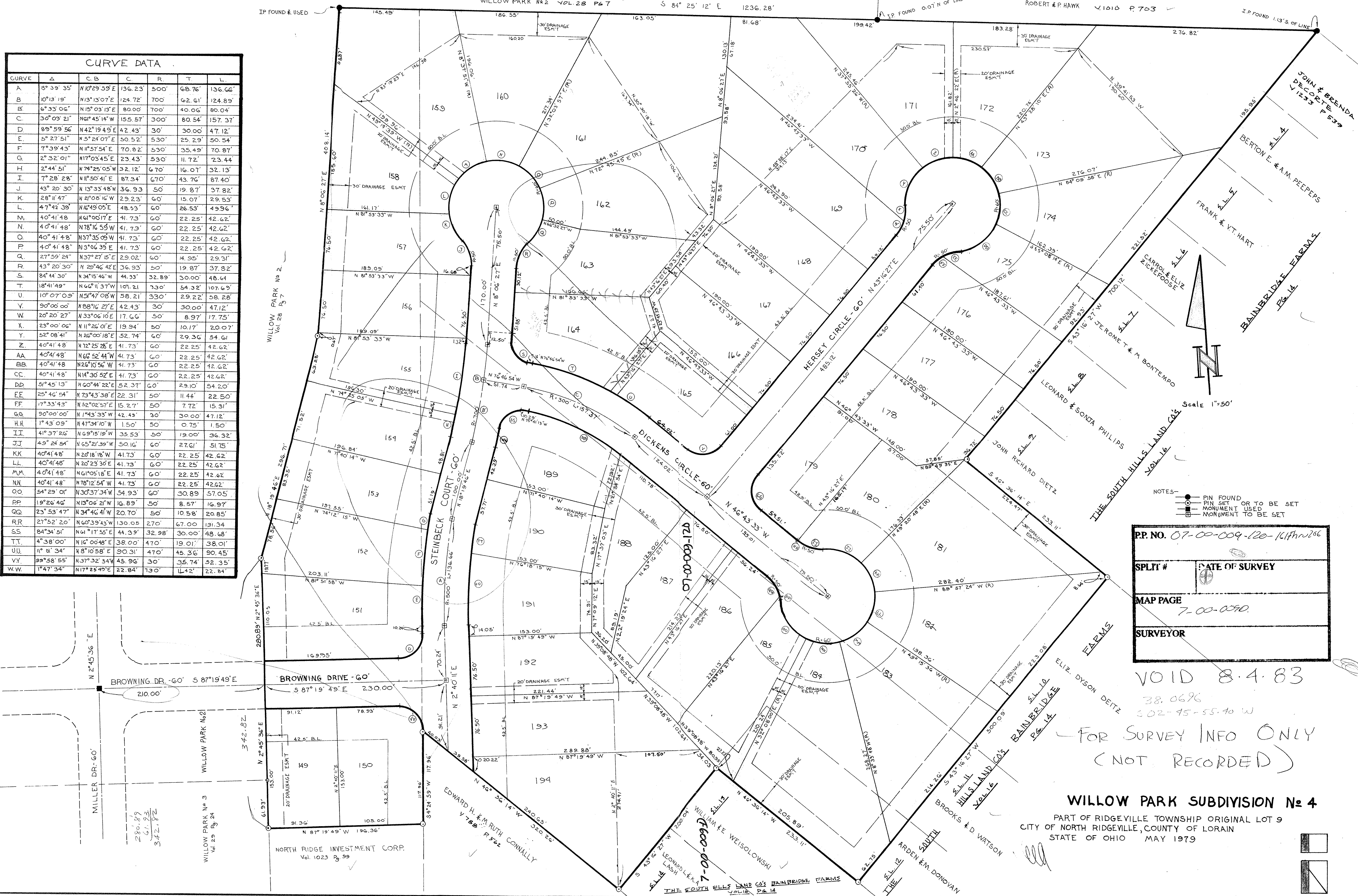


CURVE DATA						
CURVE	A	C.B	C	R	T	L
A	15° 39' 35"	N 10° 29' 39" E	136.23'	500'	68.76'	136.66'
B	10° 13' 19"	N 13° 13' 07" E	124.72'	700'	62.61'	124.89'
B	6° 35' 06"	N 15° 03' 13" E	80.00'	700'	40.06'	80.04'
C	30° 09' 21"	N 61° 45' 14" W	155.57'	300'	80.54'	157.37'
D	89° 59' 56"	N 42° 19' 49" E	42.43'	30'	30.00'	47.12'
E	5° 27' 51"	N 3° 24' 07" E	50.52'	530'	25.29'	50.54'
F	7° 39' 43"	N 1° 57' 54" E	70.82'	530'	35.49'	70.87'
G	2° 32' 01"	N 17° 03' 45" E	23.43'	530'	11.72'	23.44'
H	2° 44' 51"	N 74° 25' 05" W	32.12'	670'	16.07'	32.13'
I	7° 28' 28"	N 11° 50' 41" E	87.34'	670'	43.76'	87.40'
J	43° 20' 30"	N 13° 33' 48" W	36.93'	50'	19.87'	37.82'
K	28° 11' 47"	N 21° 08' 16" W	29.23'	60'	15.07'	29.53'
L	47° 42' 39"	N 16° 49' 05" E	48.53'	60'	26.53'	49.96'
M	40° 41' 48"	N 61° 00' 17" E	41.73'	60'	22.25'	42.62'
N	40° 41' 48"	N 78° 16' 55" W	41.73'	60'	22.25'	42.62'
O	40° 41' 48"	N 37° 35' 09" W	41.73'	60'	22.25'	42.62'
P	40° 41' 48"	N 3° 06' 39" E	41.73'	60'	22.25'	42.62'
Q	27° 59' 24"	N 37° 27' 15" E	29.02'	60'	14.95'	29.31'
R	43° 20' 30"	N 20° 46' 42" E	36.93'	50'	19.87'	37.82'
S	84° 44' 30"	N 34° 15' 46" W	44.33'	32.89'	30.00'	48.64'
T	18° 41' 49"	N 62° 11' 37" W	107.21'	730'	54.32'	107.69'
U	10° 07' 09"	N 51° 47' 08" W	58.21'	330'	29.22'	58.28'
Y	90° 00' 00"	N 88° 16' 27" E	42.43'	30'	30.00'	47.12'
W	20° 20' 27"	N 33° 06' 10" E	17.66'	50'	8.97'	17.75'
X	23° 00' 06"	N 11° 26' 01" E	19.94'	50'	10.17'	20.07'
Y	52° 08' 41"	N 26° 00' 18" E	52.74'	60'	29.36'	54.61'
Z	40° 41' 48"	N 72° 25' 28" E	41.73'	60'	22.25'	42.62'
AA	40° 41' 48"	N 66° 52' 44" W	41.73'	60'	22.25'	42.62'
BB	40° 41' 48"	N 26° 10' 56" W	41.73'	60'	22.25'	42.62'
CC	40° 41' 48"	N 14° 30' 52" E	41.73'	60'	22.25'	42.62'
DD	51° 45' 13"	N 60° 44' 22" E	52.37'	60'	29.10'	54.20'
EE	25° 46' 54"	N 73° 43' 38" E	22.31'	50'	11.44'	22.50'
FF	17° 33' 43"	N 52° 02' 57" E	15.27'	50'	7.72'	15.31'
GG	90° 00' 00"	N 1° 43' 33" W	42.43'	30'	30.00'	47.12'
HH	1° 43' 09"	N 47° 34' 10" W	1.50'	50'	0.75'	1.50'
II	41° 37' 26"	N 69° 15' 19" W	35.53'	50'	19.00'	36.32'
JJ	49° 24' 54"	N 65° 21' 39" W	50.16'	60'	27.61'	51.75'
KK	40° 41' 48"	N 20° 18' 19" W	41.73'	60'	22.25'	42.62'
LL	40° 41' 48"	N 20° 23' 30" E	41.73'	60'	22.25'	42.62'
MM	40° 41' 48"	N 61° 05' 18" E	41.73'	60'	22.25'	42.62'
NN	40° 41' 48"	N 78° 12' 54" W	41.73'	60'	22.25'	42.62'
OO	54° 29' 01"	N 30° 37' 34" W	54.93'	60'	30.89'	57.05'
PP	19° 26' 46"	N 13° 06' 21" W	16.89'	50'	8.57'	16.97'
QQ	23° 53' 47"	N 34° 46' 41" W	20.70'	50'	10.58'	20.85'
RR	27° 52' 20"	N 60° 39' 43" W	130.05'	270'	67.00'	131.34'
SS	84° 34' 51"	N 61° 17' 55" E	44.39'	32.98'	30.00'	48.68'
TT	4° 38' 00"	N 16° 00' 48" E	38.00'	470'	19.01'	38.01'
UU	11° 01' 34"	N 8° 10' 58" E	90.31'	470'	45.36'	90.45'
VV	99° 58' 55"	N 37° 32' 34" W	45.96'	30'	35.74'	52.35'
WW	1° 47' 34"	N 17° 28' 49" W	22.84'	730'	11.42'	22.84'



NOTES—

- PIN FOUND
- PIN SET OR TO BE SET
- MONUMENT USED
- MONUMENT TO BE SET

PP. NO. 07-00-009-120-161/162/163

SPLIT # _____ DATE OF SURVEY _____

MAP PAGE 7-00-009-120

SURVEYOR _____

VOID 8.4.83
 38.0696
 302-45-55.40 W
 FOR SURVEY INFO ONLY
 (NOT RECORDED)

WILLOW PARK SUBDIVISION No 4
 PART OF RIDGEVILLE TOWNSHIP ORIGINAL LOT 9
 CITY OF NORTH RIDGEVILLE, COUNTY OF LORAIN
 STATE OF OHIO MAY 1979

7-00-009-120