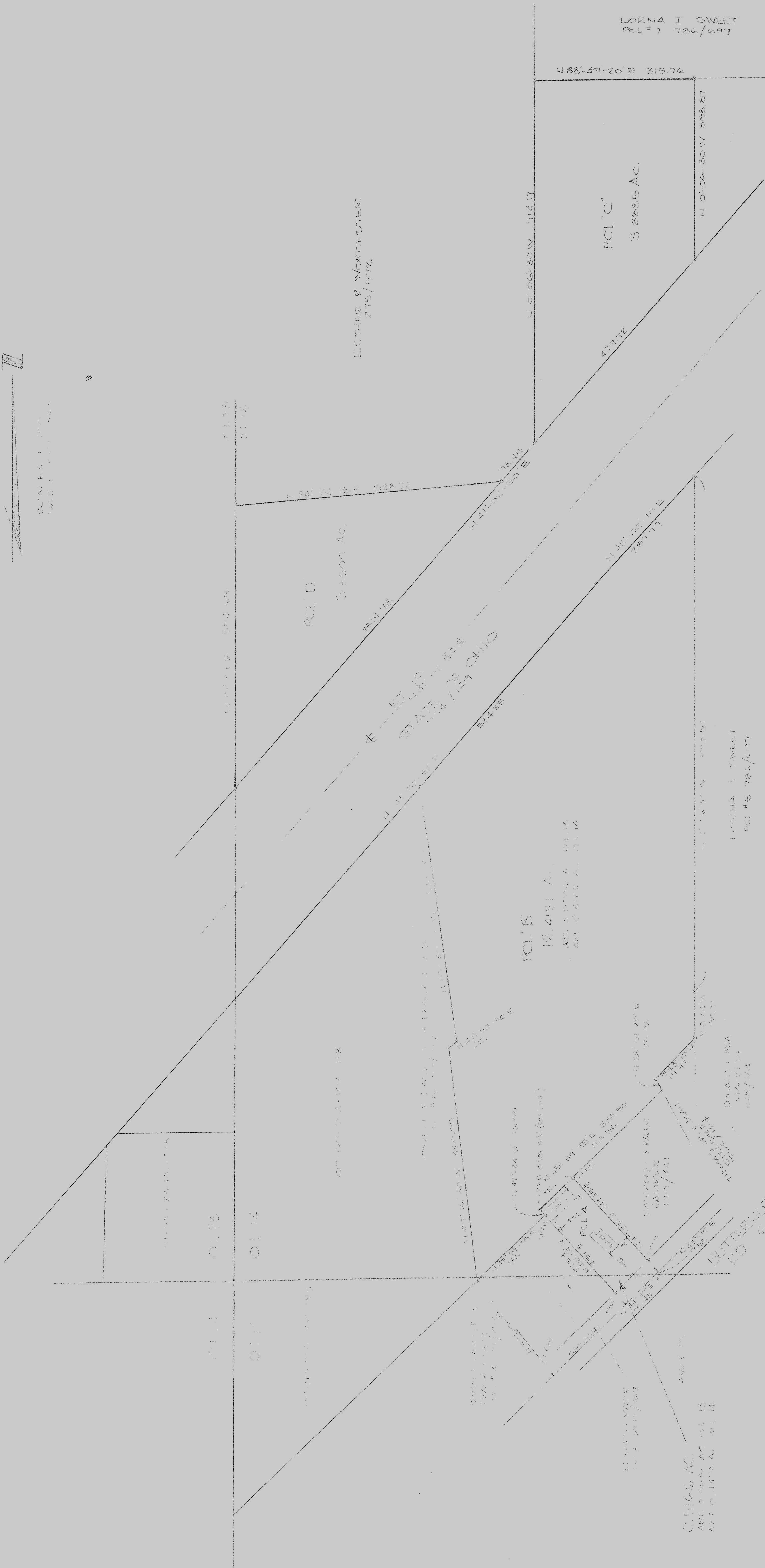


SCALE 1" = 100'

DATE 7-6-89

0



LORNA I SWEET
PCL # 7 786/897

288°-49'-20" E 319.76

N 0° 06' 30" W 714.17

PCL 'C'
3.8885 AC.

N 0° 06' 30" W 358.87

ESTHER & WORCESTER
215/812

PCL 'D'
3.500 AC.

231.78

78.45

N 41° 02' 30" E

477.72

N 122° 02' 10" E
781.77

STATE OF OHIO
EST. 19
1787/1851

N 41° 02' 30" E
524.35

PCL 'B'
12.4131 AC.

ART. 8 CHAIN AC. 01.15
ART. 12 CHAIN AC. 01.14

LORNA I SWEET
PCL # 7 786/897

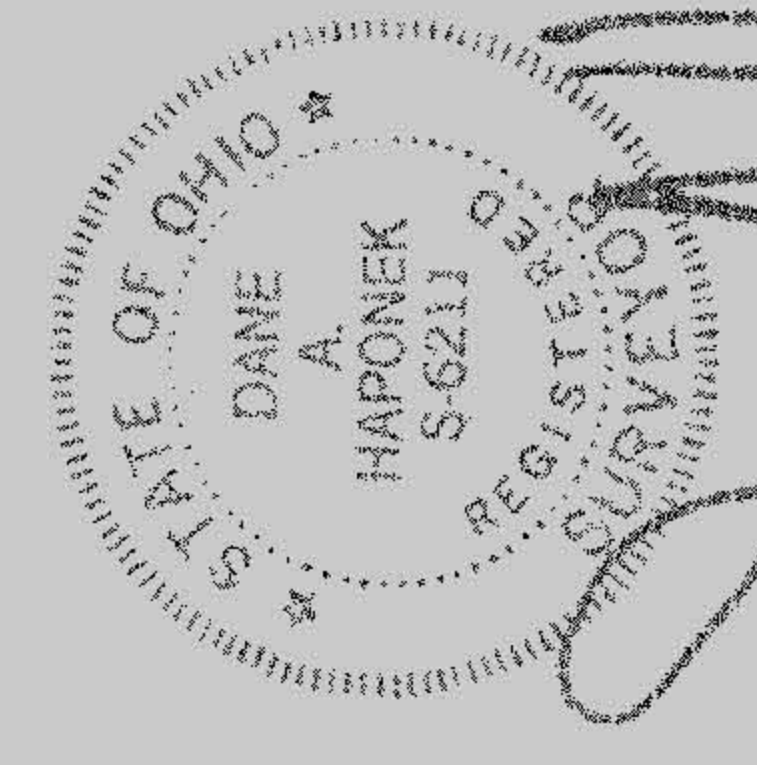
DESALIS & ANA
SUSCINI
028/174

PAYMOND & MARSH
HAMMICK
1117/441

PCL 'A'
0.5160 AC.
ART. 8 CHAIN AC. 01.15
ART. 12 CHAIN AC. 01.14

BUTTERNUT CIRCLE
R.D. 607, CLOVE

#18514
APPROVED
LORAIN CO.
MAP DEPT.
DATE 7-6-89
PAGE 7-00-014-C
BY T. McVick
VOID AFTER 18514



PREPARED BY
HAMMICK & ASSOC. INC.
ENGINEERS AND SURVEYORS
BRIDGEVILLE, OH

SURVEY
OF PART OF
ORIGINAL RIDGEVILLE
TWP. LOT NOS 13 & 14
CITY OF RIDGEVILLE

PREPARED BY
PAYMOND HAMMICK
2416 LORAIN RD.
BRIDGEVILLE, OH