

Pt.-033
Pt. 17.53 A.

Pt. 005

MARY AMMON V.314 PS.54

N-88° 54' E

886.89

696.0'

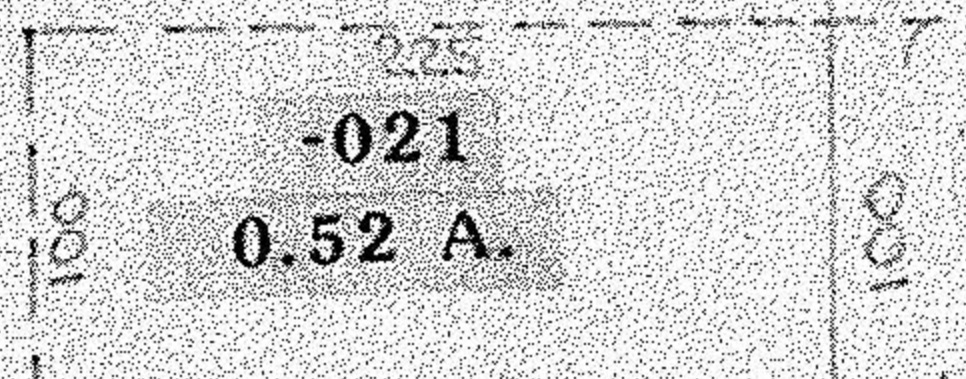
S 1° 21' E
102.837'

0.98 A.

420.0'

-021

0.52 A.



CHARLOTTE W. Schaeffer
V. 669 P. 151

-010

2.07 A.

S 1° 21' E

300

N-88° 31' E

300

-024
13.77 A.
-0.98
12.79 A.

101

1100

-026

-025

103

-023
6.57 A.

1100

-023

-021

-011
0.75 A.

95

-014
0.75 A.

95

-012
0.69 A.

300

100

-019

-017

-013
12.98 A.

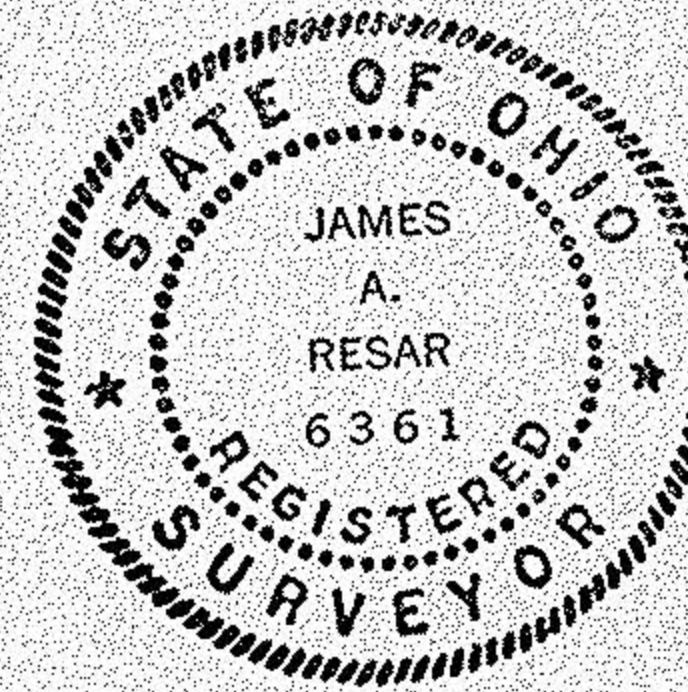
S-88° 32' 00" W

1147.13

1161.10

RD.

REED



James A. Resar

#19168

APPROVED
LORAIN CO.
MAP DEPT.

DATE 10-15-90

PAGE 7-00-012-C

BY CAROLYN FRANCIS

VOID AFTER #19168

-007

07-00-012-101-