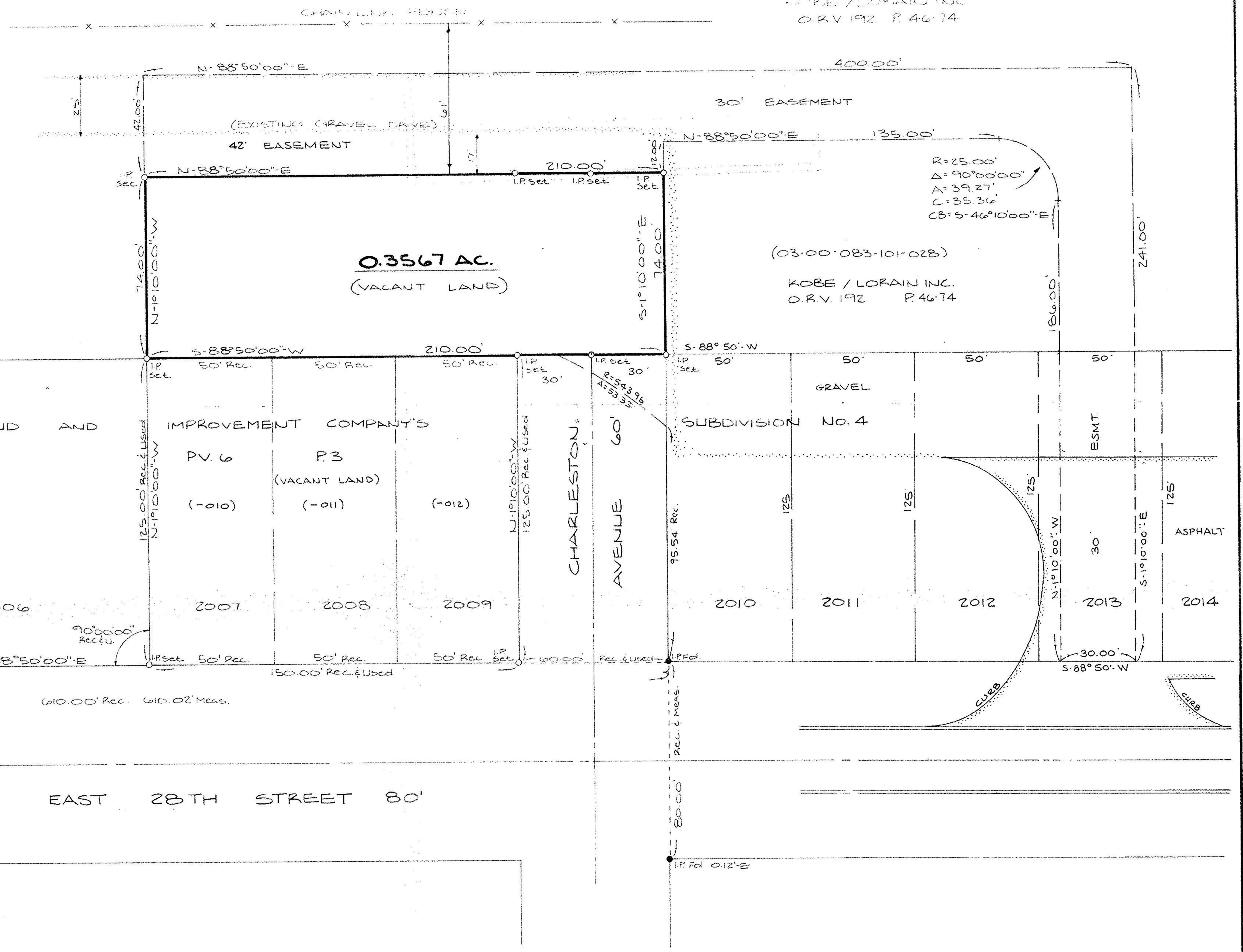
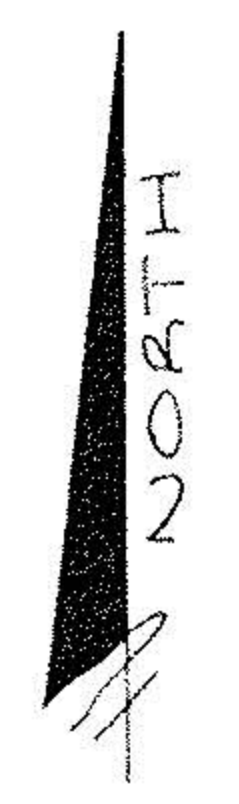


KOBE / LORAIN INC.  
O.R.V. 192 P. 46-74



PALM AVENUE

0.3567 AC.  
(VACANT LAND)

(03-00-083-101-028)  
KOBE / LORAIN INC.  
O.R.V. 192 P. 46-74

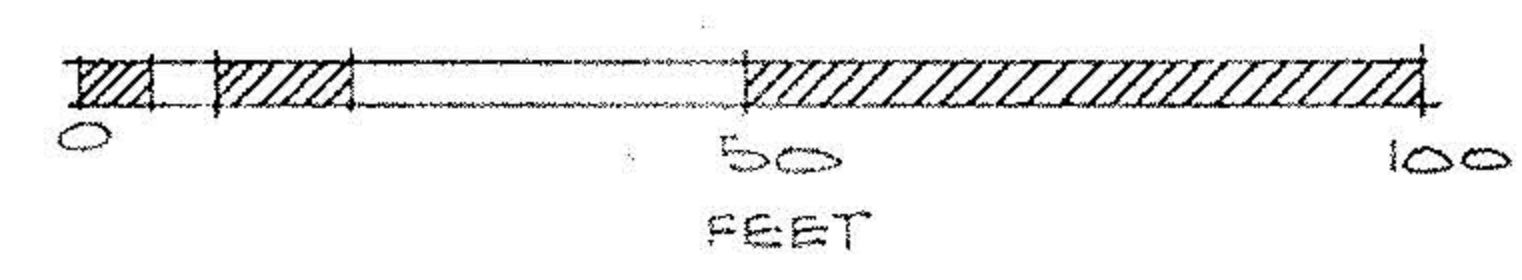
SHEFFIELD LAND AND IMPROVEMENT COMPANY'S

PV. 6 (-010) P. 3 (-011) (VACANT LAND) (-012)

SUBDIVISION No. 4

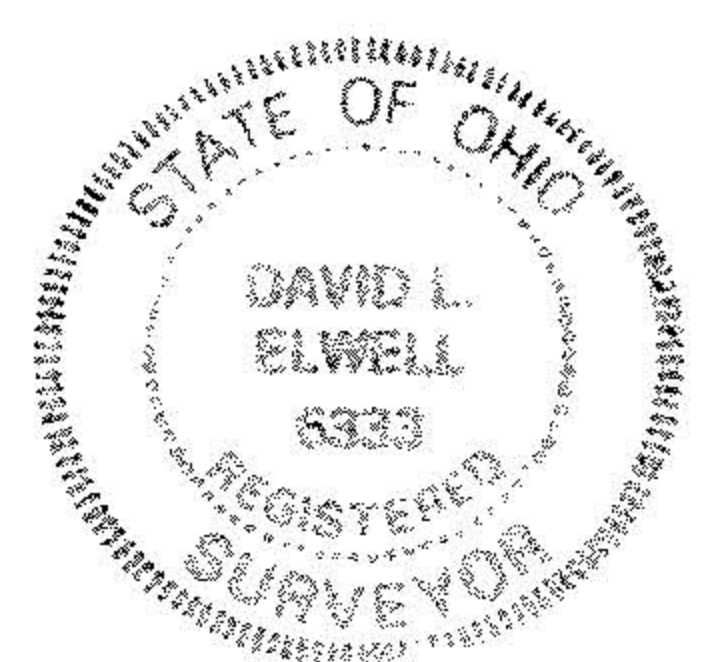
2007 2008 2009 2010 2011 2012 2013 2014

EAST 28TH STREET 80'



PREPARED BY:  
KS ASSOCIATES INC.  
ENGINEERS SURVEYORS

*David L. Elwell*  
REG. SURV. NO. 6333



APPROVED  
AS TO DESCRIPTION ONLY  
Date June 08, 1993  
City of Lorain  
Per *Jawell Kneisel*  
Engineering Dept.

APPROVED BY THE LORAIN CITY PLANNING  
COMMISSION. NO PLAT REQUIRED.  
*William E. Davis 6-9-93*  
MEMBER LORAIN CITY PLANNING COMMISSION

**SURVEY MAP**  
PART OF ORIGINAL SHEFFIELD TOWNSHIP  
LOT NO. 83  
CITY OF LORAIN COUNTY OF LORAIN  
STATE OF OHIO  
DATE: MARCH 30, 1993  
REVISED APRIL 16, 1993  
REVISED APRIL 22, 1993  
REVISED MAY 20, 1993  
SCALE: 1" = 30'