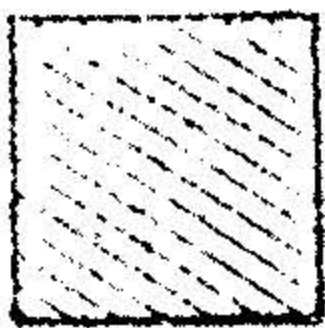


3 06.71
03-00-077-115-

C. & O. HEADLEY

15.67 AC.

TAKE



= 14.81 ac.

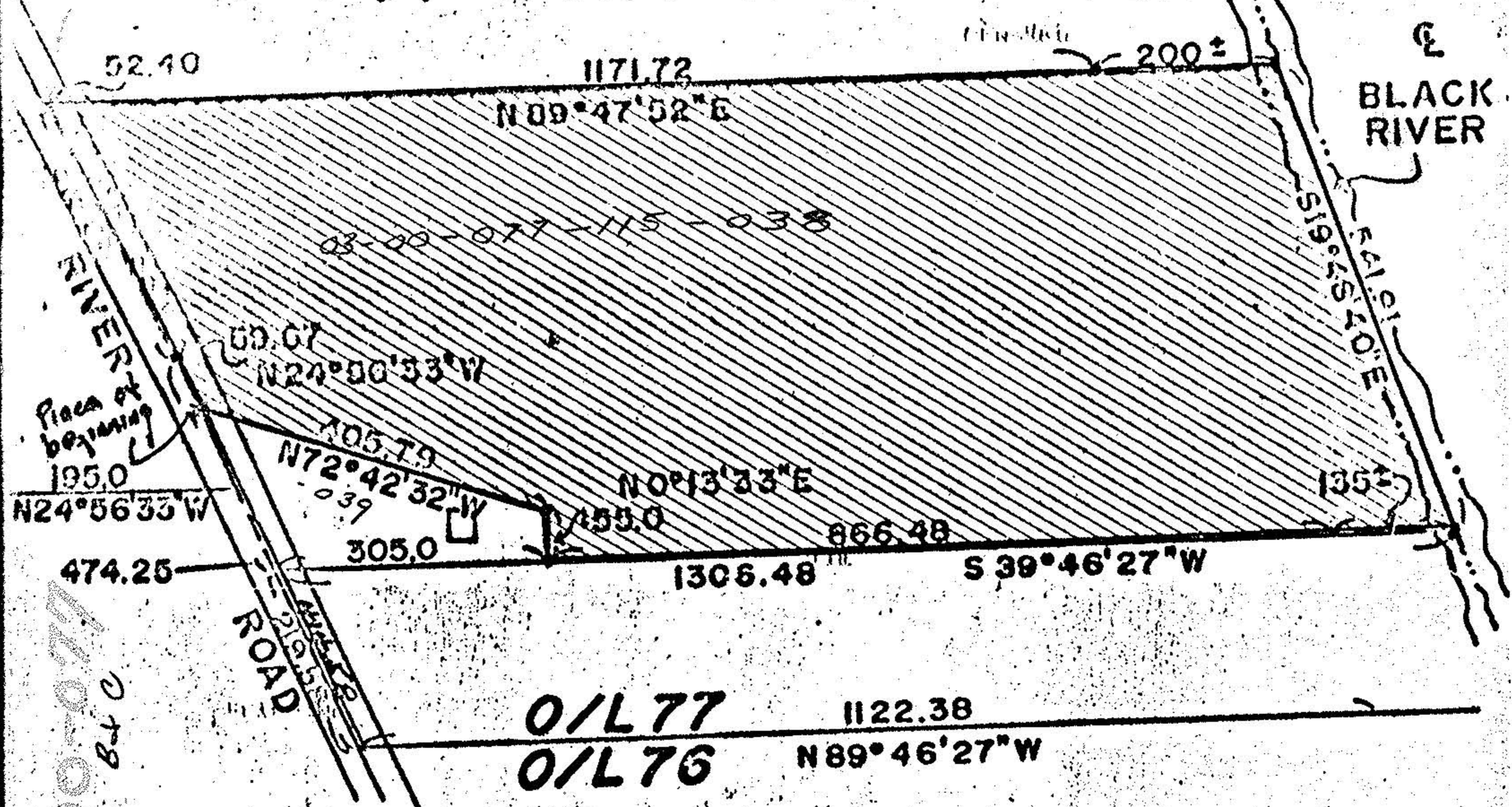
NR
10

APPROVED BY THE LORAIN CITY PLANNING
COMMISSION NO PLAT REQUIRED

[Signature]
SECRETARY LORAIN CITY PLANNING COMMISSION



77 CITY OF LORAIN 1"=200'



O/L 77 1122.38
O/L 76 N 89° 46' 27" W

ORIGINAL LOT 77	DELIMAN	ORIGINAL FRONTAGE	567.71'
SHEFFIELD TWP.		L.C.M.P.D.	372.71'
LORAIN COUNTY, O.		HEADLEY	195.00'
PERM. PARCEL 03-00-077-115-016			

3-00-077-115-016
84 C

116.48