

07-00-014-C

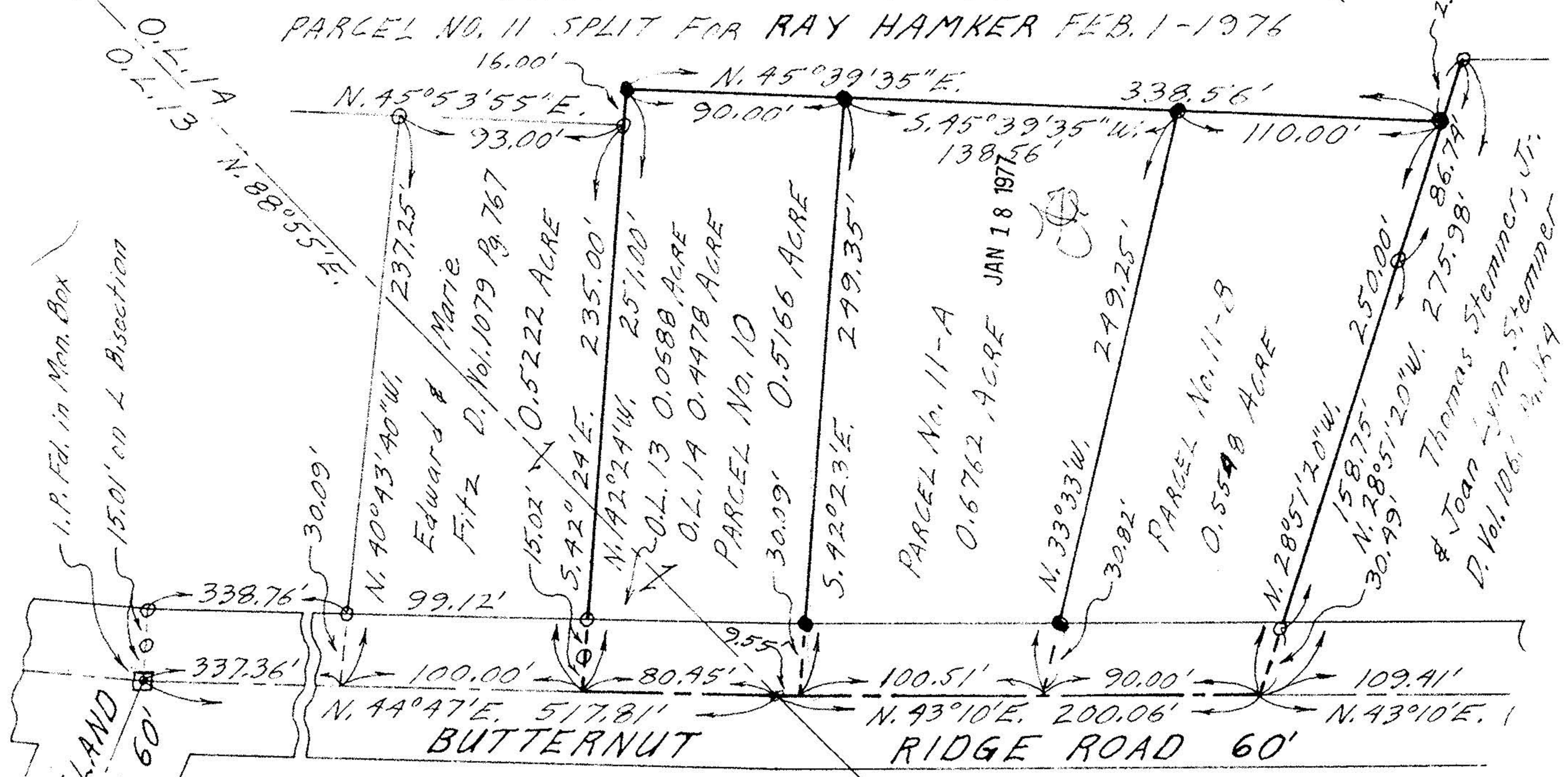
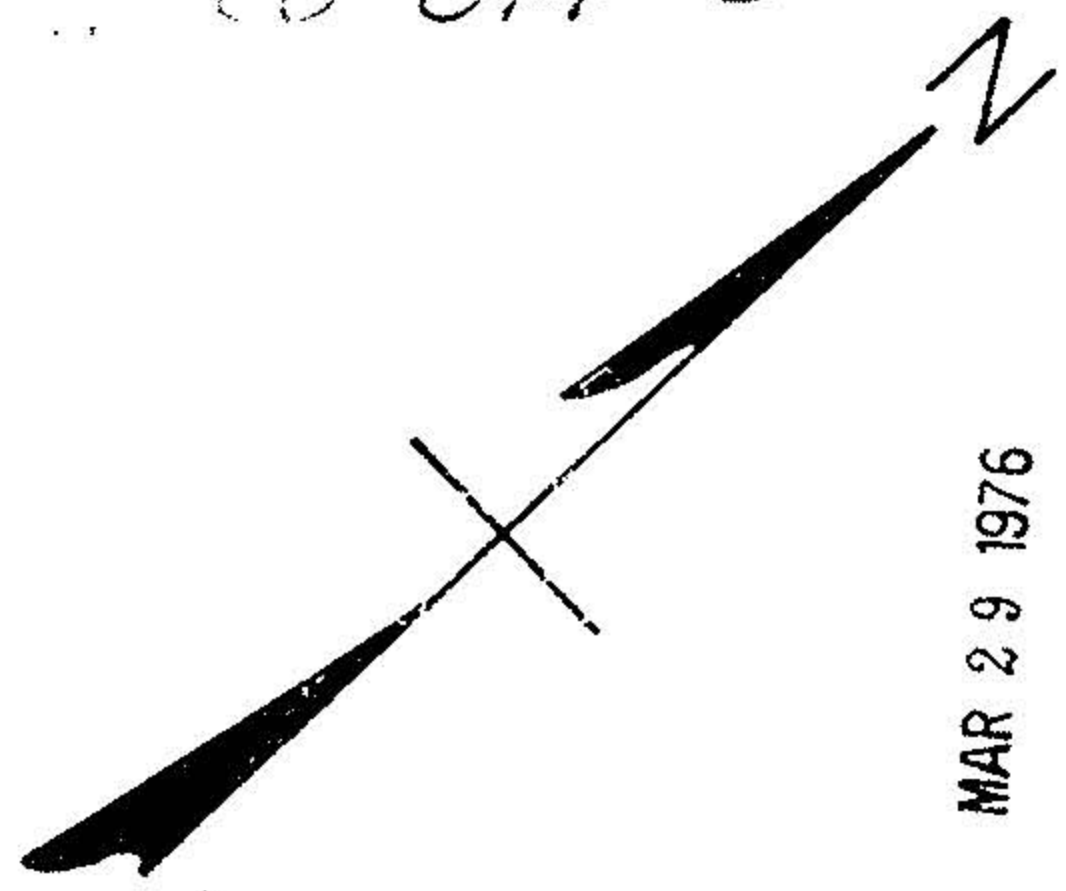
07-00-014-103

PLAT OF SURVEY FOR  
 CLARENCE F. & CATHERINE E. HAMKER  
 DIVISION OF REMAINING FRONTAGE IN  
 ORIGINAL LOTS 13 & 14 - RIDGEVILLE TWP.  
 NORTH RIDGEVILLE CITY  
 LORAIN COUNTY OHIO  
 SCALE: 1" = 60' JANUARY 9-1975

MAR 29 1976

PARCEL NO. 11 SPLIT FOR RAY HAMKER FEB. 1-1976

NOTES: 0 indicates iron pin set in 1972.



Gary E. Penfound - Reg. Surveyor No. 4457

NOTE: Bearings on this Survey ch to correspond with Surveys So.

ISLAND RD. 60'

1. P. Fd. in Man. Box

15.01' on L Bisection

338.76'

337.36'

100.00'

80.95'

100.51'

90.00'

109.41'

15.02' X 0.5222 ACRE

0.0588 ACRE

0.4478 ACRE

0.5166 ACRE

0.6762 ACRE

0.5548 ACRE

275.98'

86.79'

25.98'

110.00'

138.56'

338.56'

93.00'

90.00'

16.00'

30.09'

237.25'

235.00'

251.00'

249.35'

249.25'

250.00'

158.75'

30.49'

99.12'

9.55'

30.82'

15.02' X 0.5222 ACRE

0.0588 ACRE

0.4478 ACRE

0.5166 ACRE

0.6762 ACRE

0.5548 ACRE

275.98'

86.79'

25.98'

110.00'

138.56'

338.56'

93.00'

90.00'

16.00'

30.09'

237.25'

235.00'

251.00'

249.35'

249.25'

250.00'

158.75'

30.49'

99.12'

9.55'

30.82'

15.02' X 0.5222 ACRE

0.0588 ACRE

0.4478 ACRE

0.5166 ACRE

0.6762 ACRE

0.5548 ACRE

275.98'

86.79'

25.98'

110.00'

138.56'

338.56'

93.00'

90.00'

16.00'

30.09'

237.25'

235.00'

251.00'

249.35'

249.25'

250.00'

158.75'

30.49'

99.12'

9.55'

30.82'

15.02' X 0.5222 ACRE

0.0588 ACRE

0.4478 ACRE

0.5166 ACRE

0.6762 ACRE

0.5548 ACRE

275.98'

86.79'

25.98'

110.00'

138.56'

338.56'

93.00'

90.00'

16.00'

30.09'

237.25'

235.00'

251.00'

249.35'

249.25'

250.00'

158.75'

30.49'

99.12'

9.55'

30.82'

15.02' X 0.5222 ACRE

0.0588 ACRE

0.4478 ACRE

0.5166 ACRE

0.6762 ACRE

0.5548 ACRE

275.98'

86.79'

25.98'

110.00'

138.56'

338.56'

93.00'

90.00'

16.00'

30.09'

237.25'

235.00'

251.00'

249.35'

249.25'

250.00'

158.75'

30.49'

99.12'

9.55'

30.82'

15.02' X 0.5222 ACRE

0.0588 ACRE

0.4478 ACRE

0.5166 ACRE

0.6762 ACRE

0.5548 ACRE

275.98'

86.79'

25.98'

110.00'

138.56'

338.56'

93.00'

90.00'

16.00'

30.09'

237.25'

235.00'

251.00'

249.35'

249.25'

250.00'

158.75'

30.49'

99.12'

9.55'

30.82'

15.02' X 0.5222 ACRE

0.0588 ACRE

0.4478 ACRE

0.5166 ACRE

0.6762 ACRE

0.5548 ACRE

275.98'

86.79'

25.98'

110.00'

138.56'

338.56'

93.00'

90.00'

16.00'

30.09'

237.25'

235.00'

251.00'

249.35'

249.25'

250.00'

158.75'

30.49'

99.12'

9.55'

30.82'

15.02' X 0.5222 ACRE

0.0588 ACRE

0.4478 ACRE

0.5166 ACRE

0.6762 ACRE

0.5548 ACRE

275.98'

86.79'

25.98'

110.00'

138.56'

338.56'

93.00'

90.00'

16.00'

30.09'

237.25'

235.00'

251.00'

249.35'

249.25'

250.00'

158.75'

30.49'

99.12'

9.55'

30.82'

15.02' X 0.5222 ACRE

0.0588 ACRE

0.4478 ACRE

0.5166 ACRE

0.6762 ACRE

0.5548 ACRE

275.98'

86.79'

25.98'

110.00'

138.56'

338.56'

93.00'

90.00'

16.00'

30.09'

237.25'

235.00'

251.00'

249.35'

249.25'

250.00'

158.75'

30.49'

99.12'

9.55'

30.82'

15.02' X 0.5222 ACRE

0.0588 ACRE

0.4478 ACRE

0.5166 ACRE

0.6762 ACRE

0.5548 ACRE

275.98'

86.79'

25.98'

110.00'

138.56'

338.56'

93.00'

90.00'

16.00'

30.09'

237.25'

235.00'

251.00'

249.35'

249.25'

250.00'

158.75'

30.49'

99.12'

9.55'

30.82'

15.02' X 0.5222 ACRE

0.0588 ACRE

0.4478 ACRE

0.5166 ACRE

0.6762 ACRE

0.5548 ACRE

275.98'

86.79'

25.98'

110.00'

138.56'

338.56'