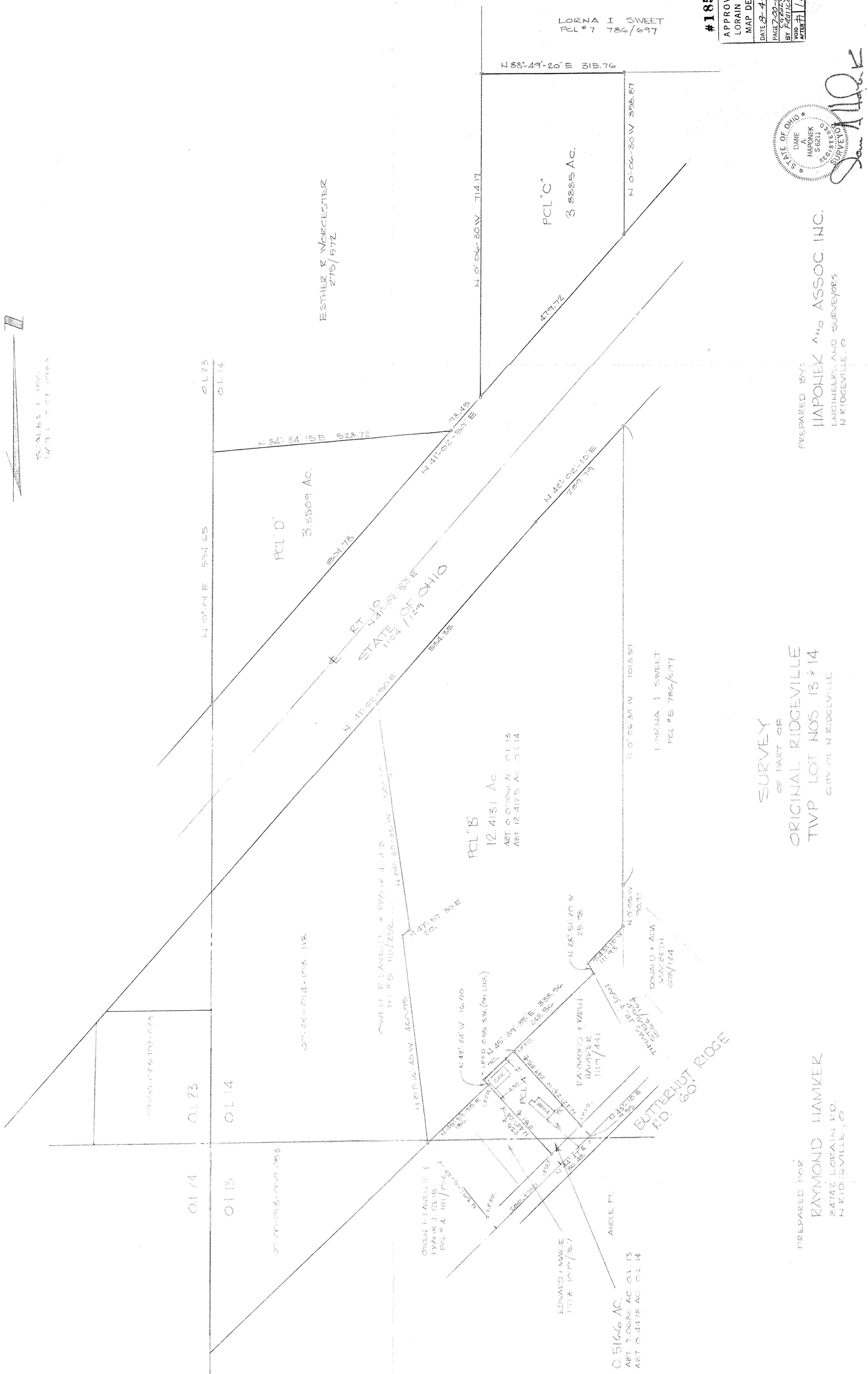




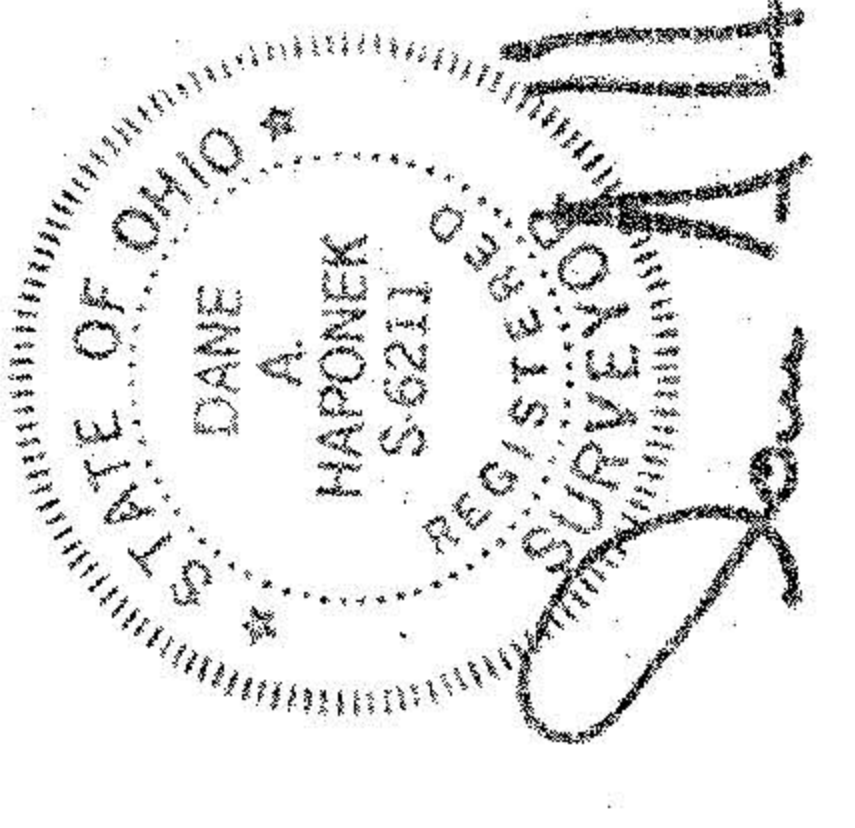
SCALE 1"=100'
DATE 7/27/1988



LORNA I SWEET
PCL # 7 786/697

#18561

APPROVED
LORAIN CO.
MAP DEPT.
DATE 8-4-89
PAGE 7-20-014C
BY F. HAPONEK
VOID AFTER #18561



PREPARED BY:
HAPONEK AND ASSOC. INC.
ENGINEERS AND SURVEYORS
N RIDGEVILLE, OH

SURVEY
OF PART OF
ORIGINAL RIDGEVILLE
TWP LOT NOS 13 & 14
CITY OF N RIDGEVILLE

PREPARED FOR
RAYMOND HAMKER
34742 LORAIN RD.
N RIDGEVILLE, OH

PCL 'D'
3.3509 AC.

PCL 'B'
12.4131 AC.
ART. 5.07000 N O.L. 13
ART. 12.4175 AC O.L. 14

PCL 'C'
3.8885 AC.

0.5166 AC.
ART. 2.0688 AC O.L. 13
ART. 0.4478 AC O.L. 14

ESTHER R NORCESTER
275/572

LORNA I SWEET
PCL # 5 786/697

DONALD & ANNA
SWANBERG
678/124

BUTTERNUT RIDGE
RD. 60' WIDE

EDWARD F MAZIE
1772 10/17/76.7

RAYMOND & VALERIE
HAMKER
1117/441

OVEN F LANEILLE &
FRANK J. GEIB
PCL # 4 111/756.7

OVEN F LANEILLE & FRANK J. GEIB
PCL # 5 111/252.1
H.C. BOYD & SONS
10/11/18

EDWARD F MAZIE
1772 10/17/76.7

RAYMOND & VALERIE
HAMKER
1117/441

LORNA I SWEET
PCL # 5 786/697

LORNA I SWEET
PCL # 5 786/697

PCL 'D'
3.3509 AC.

PCL 'B'
12.4131 AC.

PCL 'C'
3.8885 AC.

LORNA I SWEET
PCL # 7 786/697