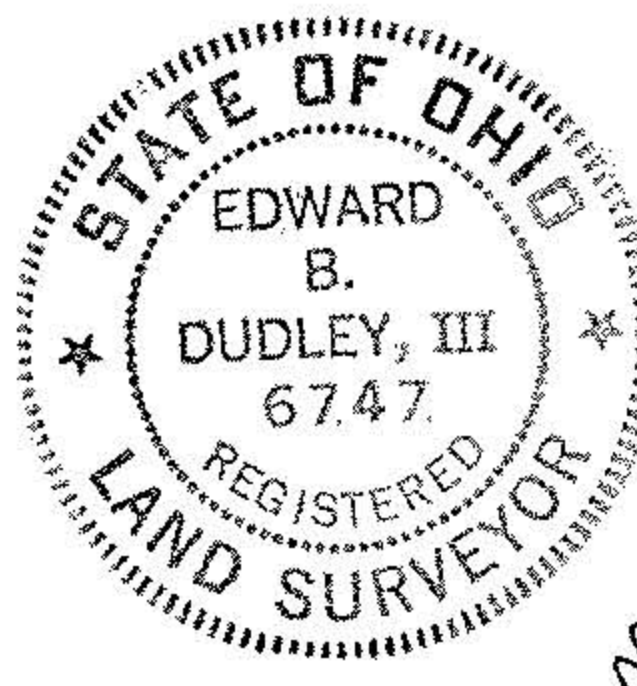


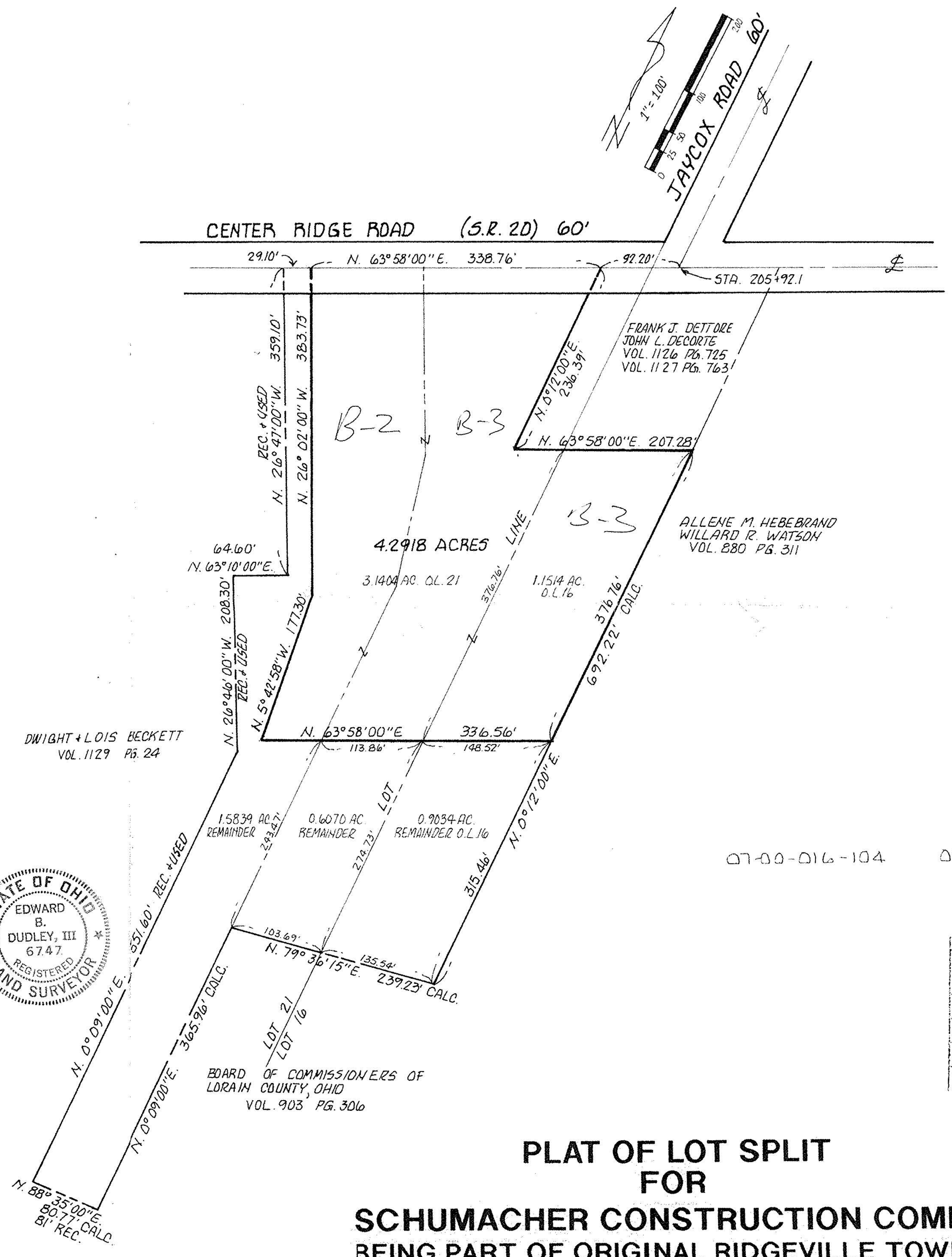
THE NORTH COAST ENGINEERING AND SURVEYING CO., INC.
 2570 SUPERIOR AVENUE, SUITE 501
 CLEVELAND, OHIO 44114
 (216) 241-7070

DIMENSIONS SHOWN ON THIS PLAT ARE EXPRESSED IN FEET AND DECIMAL PARTS THEREOF. BEARINGS ARE SHOWN TO AN ASSUMED MERIDIAN AND ARE INTENDED TO INDICATE ANGLES ONLY, ALL OF WHICH I HEREBY CERTIFY TO BE CORRECT TO THE BEST OF MY KNOWLEDGE.

EDWARD B. DUDLEY III F.L.S. NO. 6747 DATE 10-9-68



BOARD OF COMMISSIONERS OF LORAIN COUNTY, OHIO
 VOL. 903 PG. 306



FRANK J. DETTORE
 JOHN L. DECORTE
 VOL. 1126 PG. 725
 VOL. 1127 PG. 763

ALLENE M. HEBBRAND
 WILLARD R. WATSON
 VOL. 880 PG. 311

DWIGHT + LOIS BECKETT
 VOL. 1129 PG. 24

07-00-016-104

07-00-021-119

19668

APPROVED
 LORAIN CO.
 MAP DEPT.
 DATE 11-13-91
 PAGE 7-00-016A
 BY CHAROLYN FRANCIS
 VOID AFTER #19668

PLAT OF LOT SPLIT FOR SCHUMACHER CONSTRUCTION COMPANY BEING PART OF ORIGINAL RIDGEVILLE TOWNSHIP LOTS NO. 16 AND 21 NOW LOCATED IN THE CITY OF NORTH RIDGEVILLE, LORAIN COUNTY, OHIO