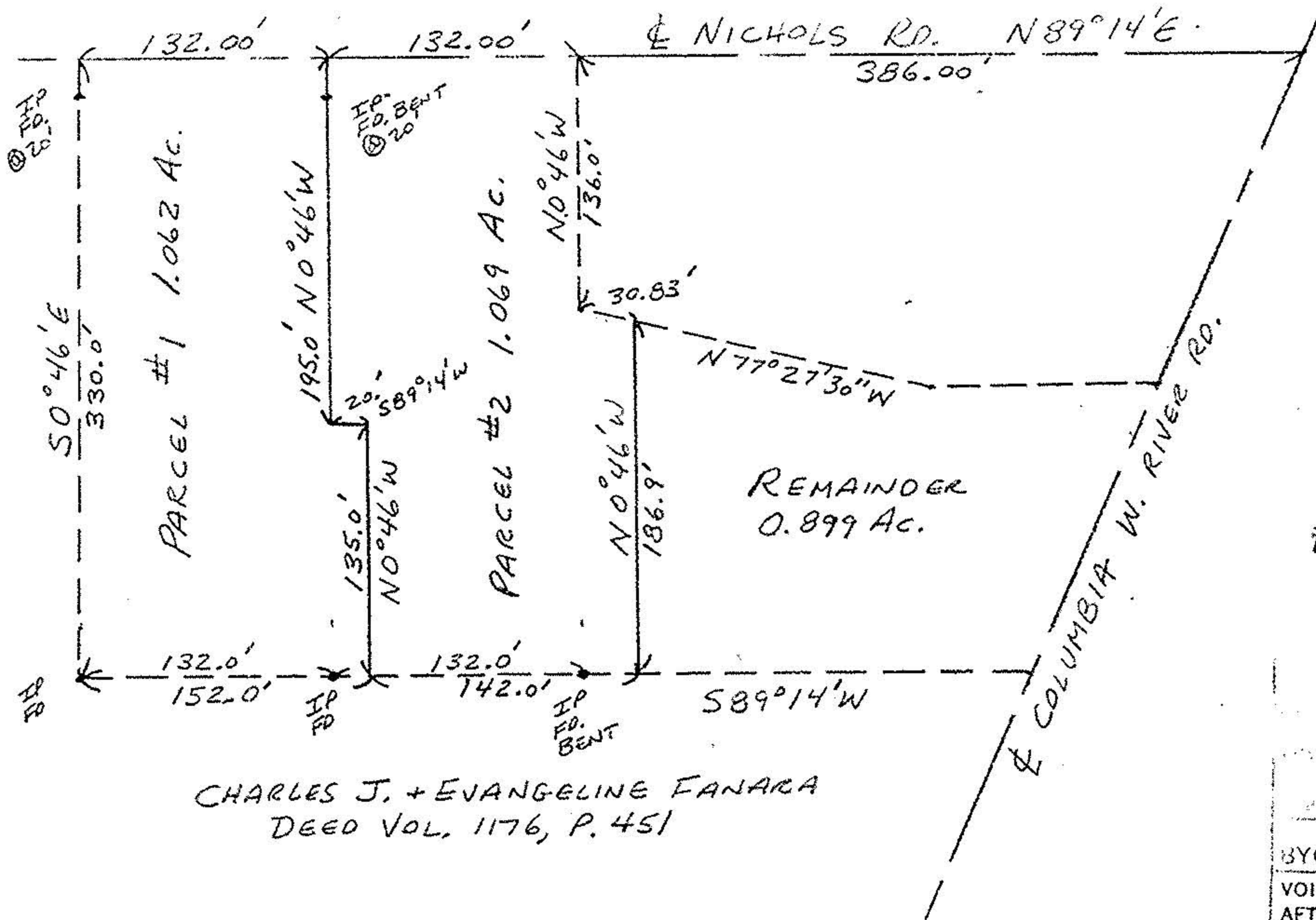


NORTH
SCALE 1"=100'

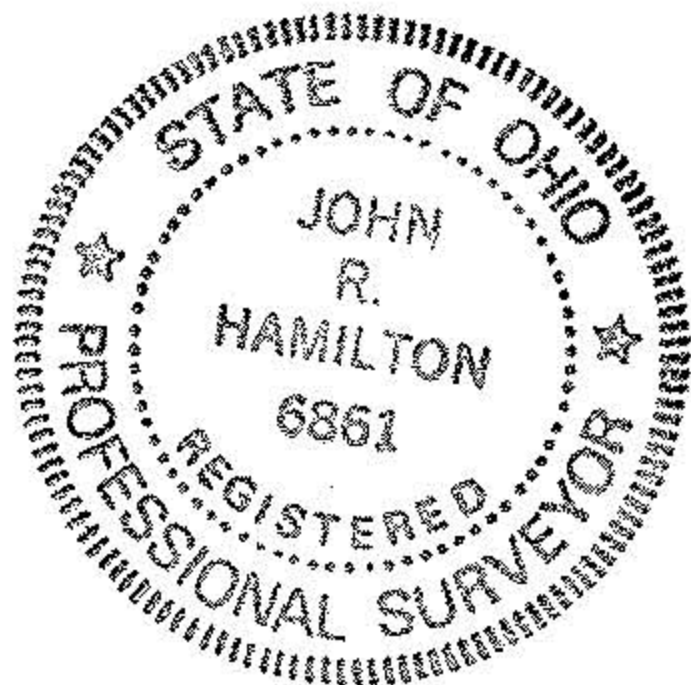
ROGER FITCH
DEED VOL. 936, P. 758



CHARLES J. + EVANGELINE FANARA
DEED VOL. 1176, P. 451

#17991

APPROVED
LORAIN CO.
MAP DEPT.
6-16-88
1200-044-A
BY CAROL FRANCIS
VOID AFTER * 17991



MAP OF PART OF D. L. 44 FOR DOUG KEYSE
COLUMBIA TWP. - LORAIN CO.

SCALE: 1"=100'	APPROVED BY:	DRAWN BY JRH
DATE: 2/1/88		REVISED
JOHN R. HAMILTON - REG. SURV. #6861		

DRAWING NUMBER