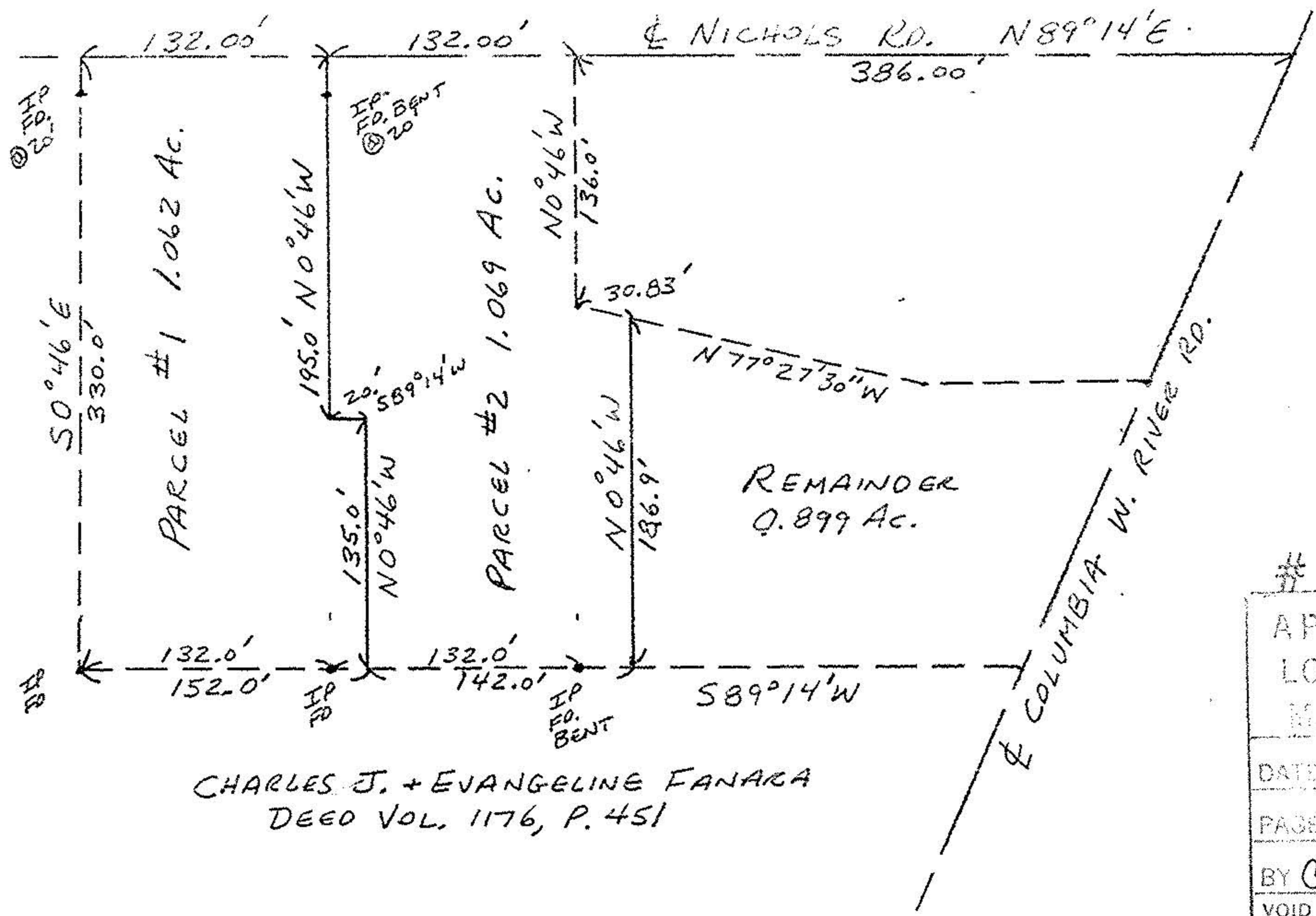


NORTH  
SCALE 1"=100'

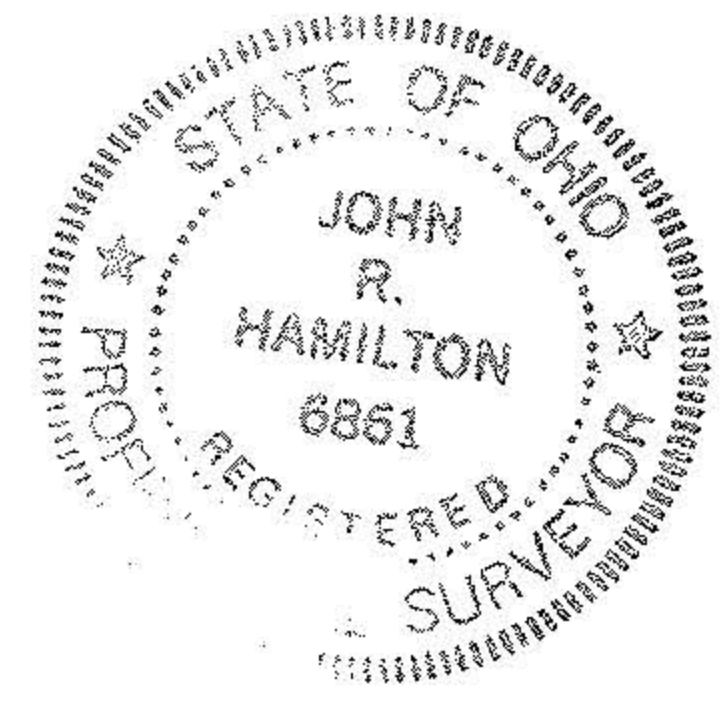
ROGER FITCH  
DEED VOL. 936, P. 758



CHARLES J. + EVANGELINE FANARA  
DEED VOL. 1176, P. 451

#17847

APPROVED LORAIN CO. MAP DEPT.	
DATE 2-11-88	
PAGE 12-00-044-A	
BY Carol-Francis	
VOID AFTER	* 17847



MAP OF PART OF D.L. 44 FOR DOUG KEYSE  
COLUMBIA TWP. - LORAIN CO.

SCALE 1"=100'	APPROVED BY:	DRAWN BY JRH
DATE 2/1/88		REVISED
JOHN R. HAMILTON - REG. SURV. #6861		
		DRAWING NUMBER