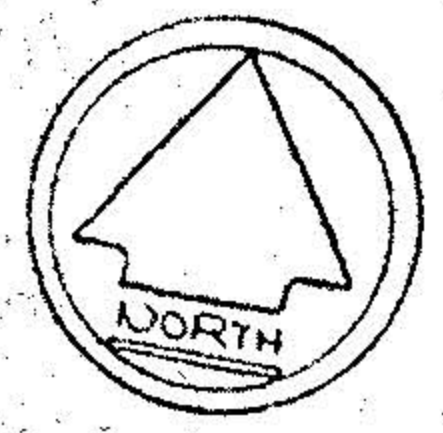
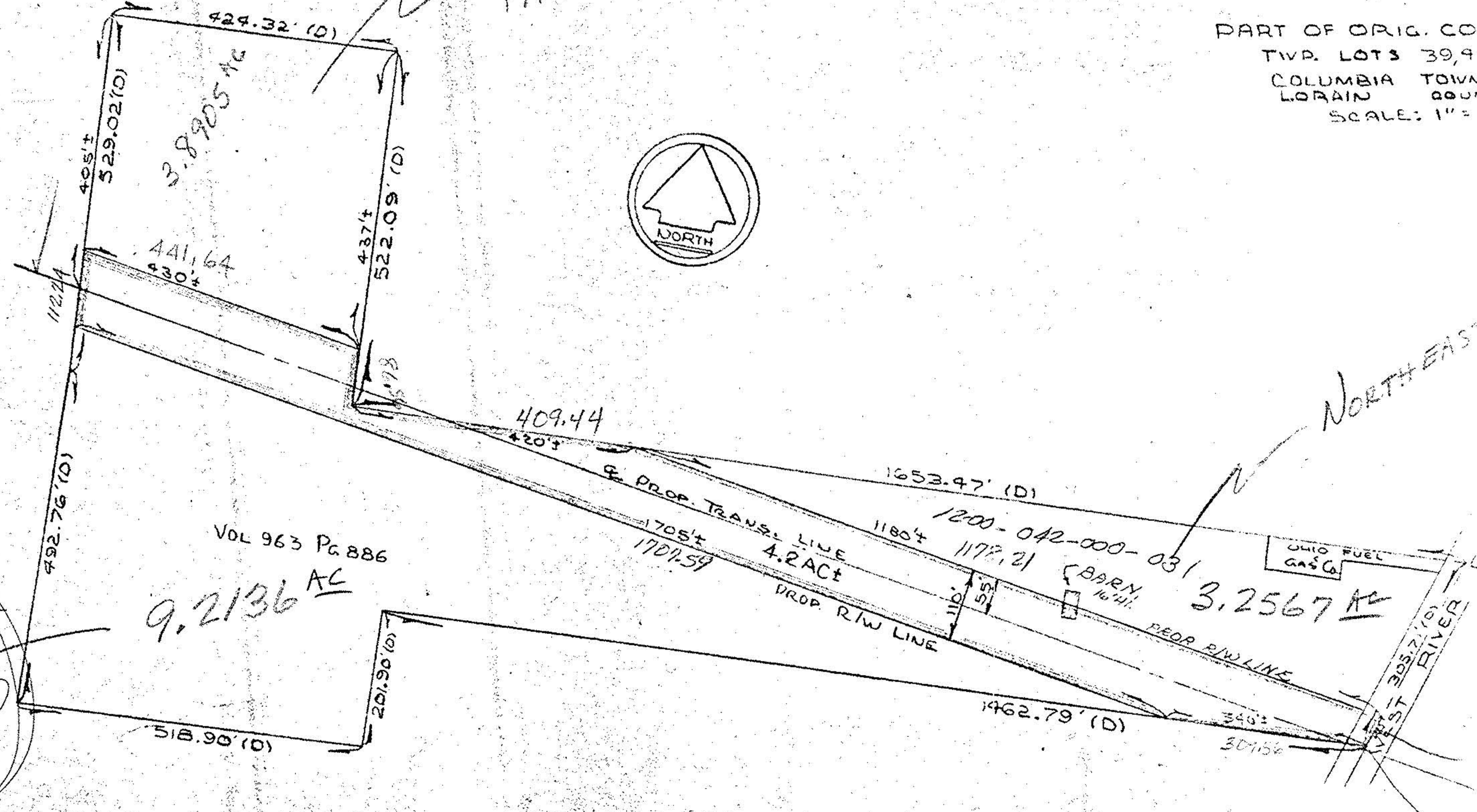


NORTH WEST PARCEL

PART OF ORIG. COL
TWP. LOTS 39, 41
COLUMBIA TOWNSHIP
LORAIN COUNTY
SCALE: 1" = 100'



NORTH EAST



VOL 963 Pg 886
9.2136 AC

3.8905 AC

1200-042-000-031

3.2567 AC

SOUTH WEST PARCEL

039 A
042 A
042

5601
1099

1200-042-000-031

1099 #

17