

KS ASSOCIATES, INC.
 424 Middle Ave. P.O. Box 89
 ELYRIA, OHIO 44036
 (216) 322-6317

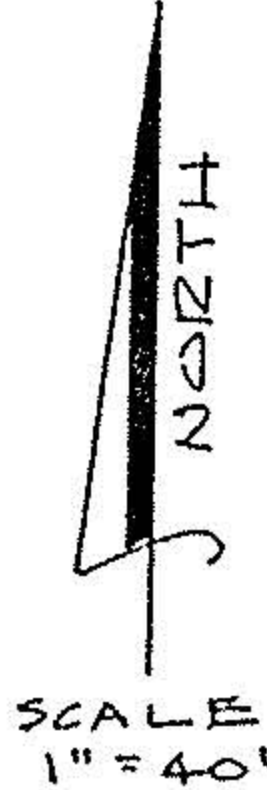
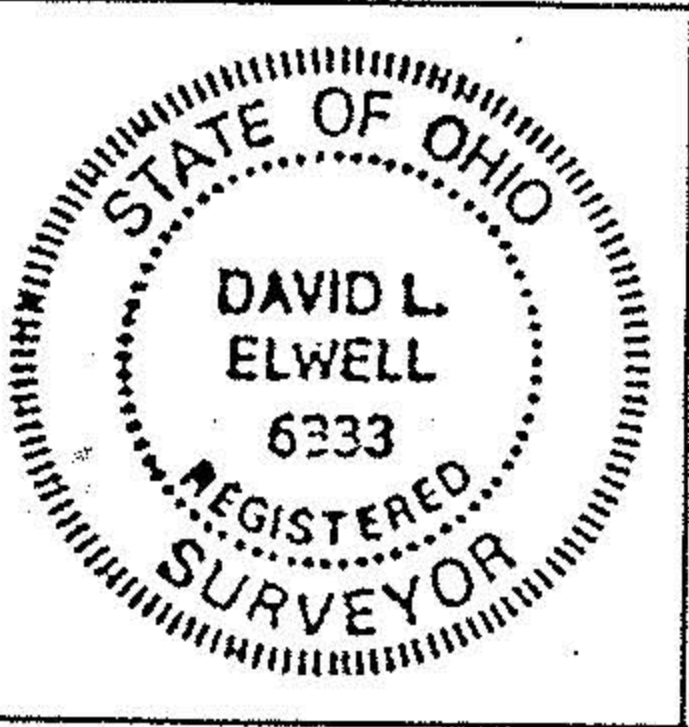
POPLAR ST. 40'

N-89°46'-W

PK PD OVER M.B.

● INDICATES I.P. FD.
 ○ INDICATES I.P. SET

INDICATES LOT DISTANCES AS RECORDED ON PLAT

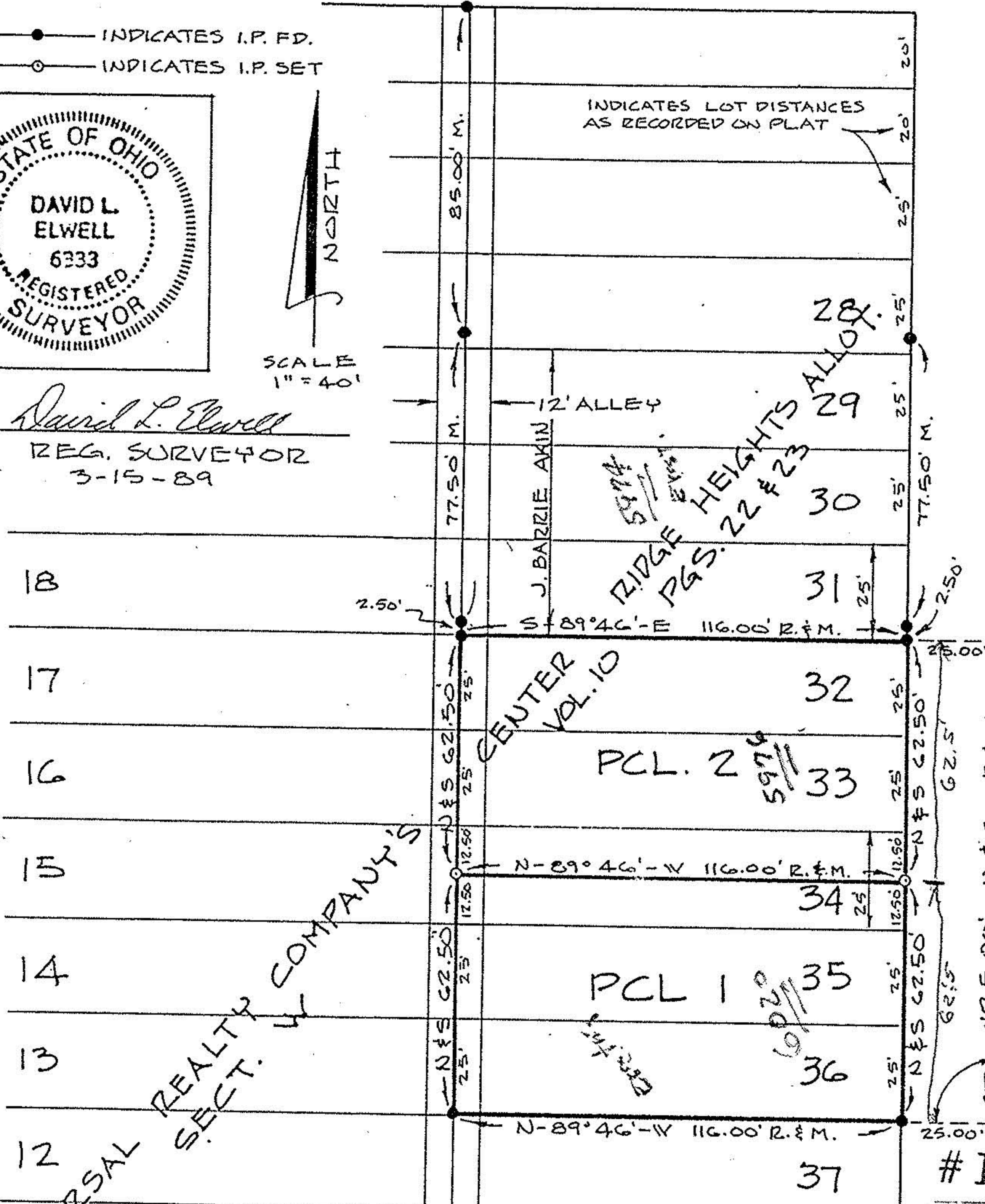


David L. Elwell
 REG. SURVEYOR
 3-15-89

07-00-020-124

#18376

7-00-020-B



RIDGEVIEW BLVD. 50'

#18376

MAP OF SURVEY OF

SUBLOTS 32 THRU 36 IN SECTION W OF
 UNIVERSAL REALTY COMPANY'S CENTER
 RIDGE HEIGHTS ALLOTMENT OF ORIGINAL
 RIDGEVILLE TOWNSHIP LOTS NOS. 20 & 21 -
 CITY OF NORTH RIDGEVILLE, CO. OF LORAIN, STATE OF OH.

APPROVED
 LORAIN CO.
 MAP DEPT.

DATE 4-5-89

PAGE 7-00-020-D

BY C. H. FRANCIS
 89-062

VOID AFTER # 18376