

SKETCH TO ACCOMPANY LEGAL DESCRIPTION

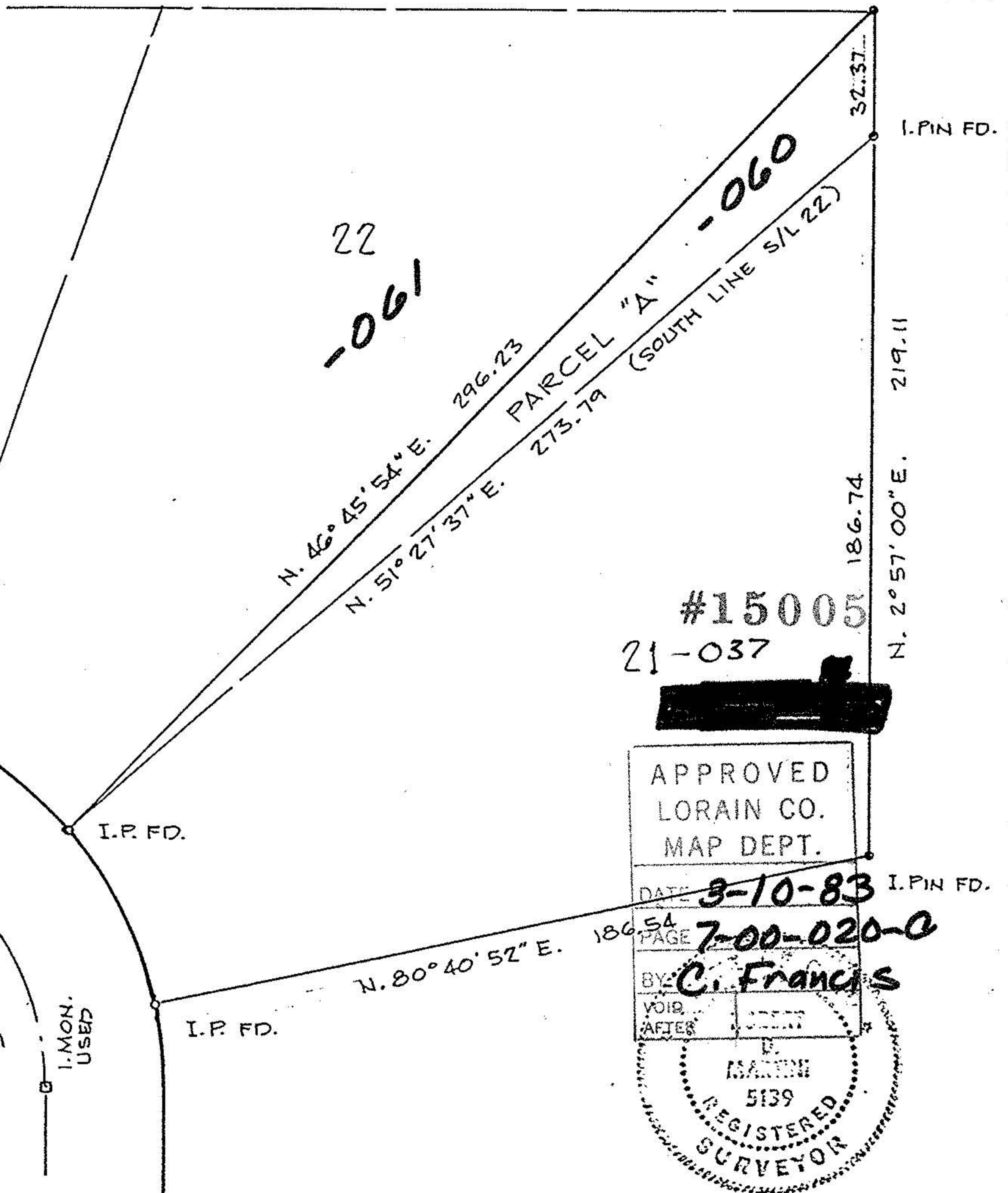
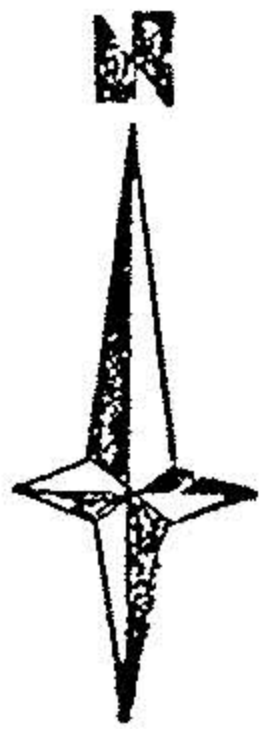
OF PART OF SUBLOT NO 22 IN SANDELWOOD ACRES  
SUBD. NO 1 AS RECORDED IN VOL. 27-PG. 51, L.C.M.R.

CITY OF NORTH RIDGEVILLE, OHIO

SCALE: 1" = 40'  
FEB. 18, 1983

MARTINI-HAPONEK & ASSOC.  
ENGINEERS-SURVEYORS

#15005



#15005  
21-037

APPROVED  
LORAIN CO.  
MAP DEPT.

DATE 3-10-83

PAGE 54  
7-00-020-a

BY C. FRANCIS

VOID AFTER



07-00-020-122

7-00-020-c