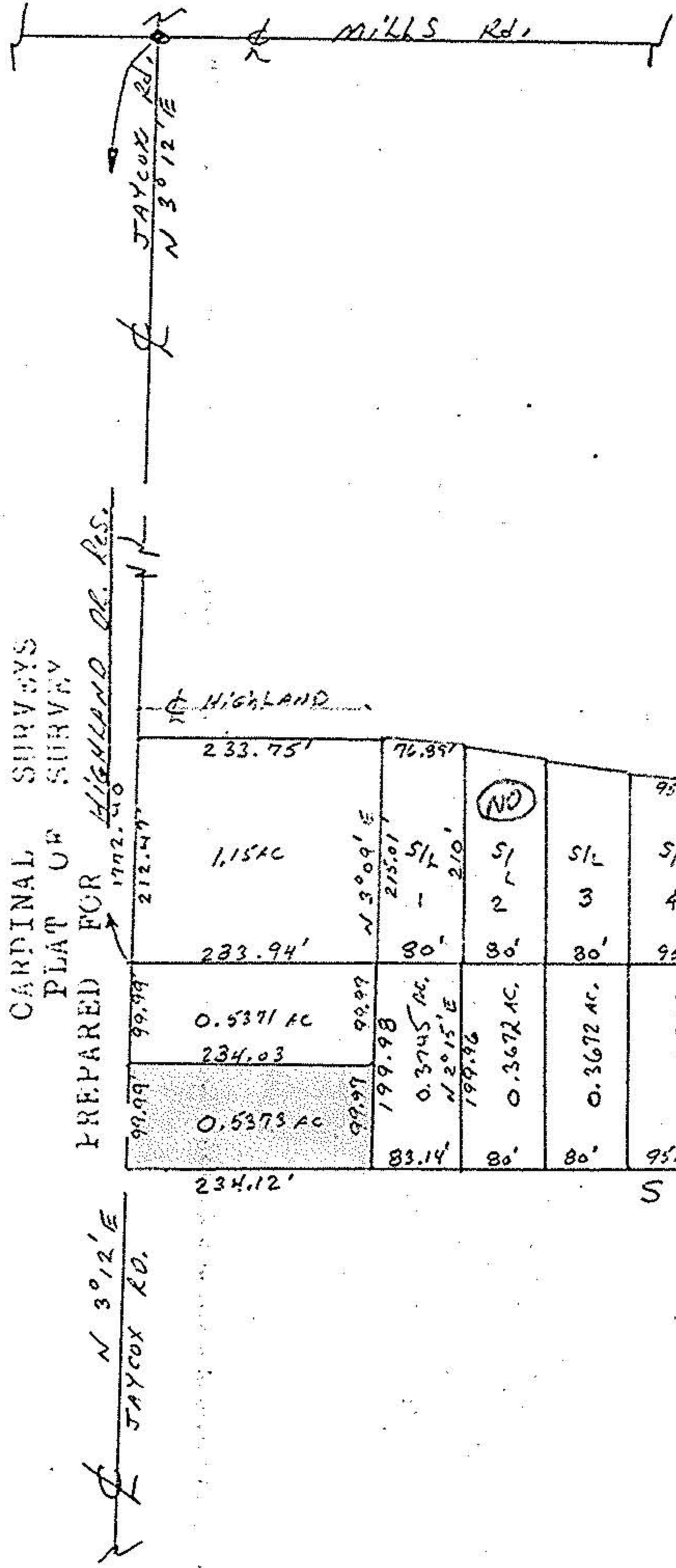


CARDINAL SURVEYS  
PLAT OF SURVEY

PREPARED FOR HIGHLAND DR. RES.



7-00-018-0 #18778 07-00-018-101

#18778

APPROVED  
LORAIN CO.  
MAP DEPT.  
DATE 12-18-89  
PAGE 7-00-018-0  
BY T. McMain  
VOID AFTER 18778

1"=200'

DATE: OCT. 10, 1988

SCALE: 1"=200'