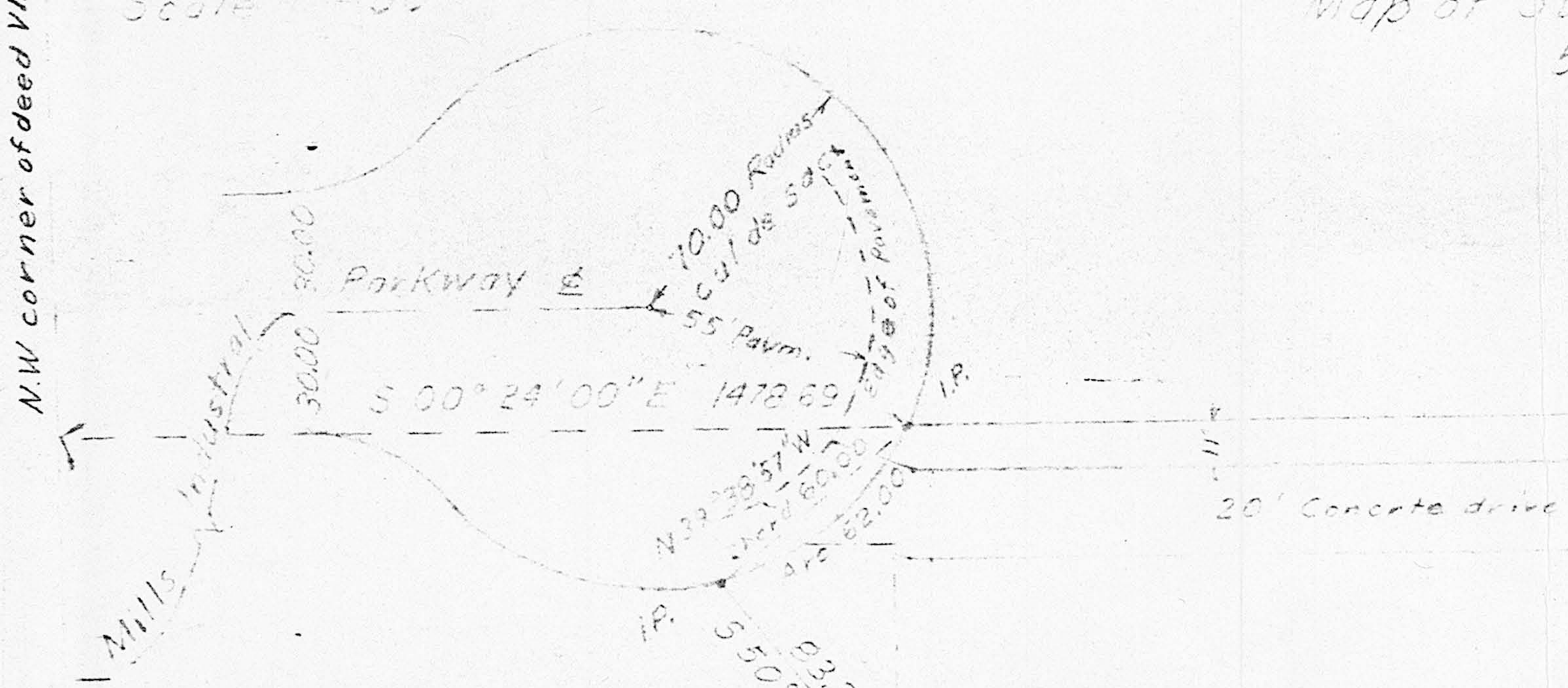


NW corner of deed VIII-7-P

Scale 1" = 50'

Map of Survey for Smith Properties and Development Inc. 5208 Mills Industrial Parkway N. Ridgville

Surveyed by Michael Papcum
Registered Surveyor S-004596
November 1977



5' 00° 24' 00" W 542.33

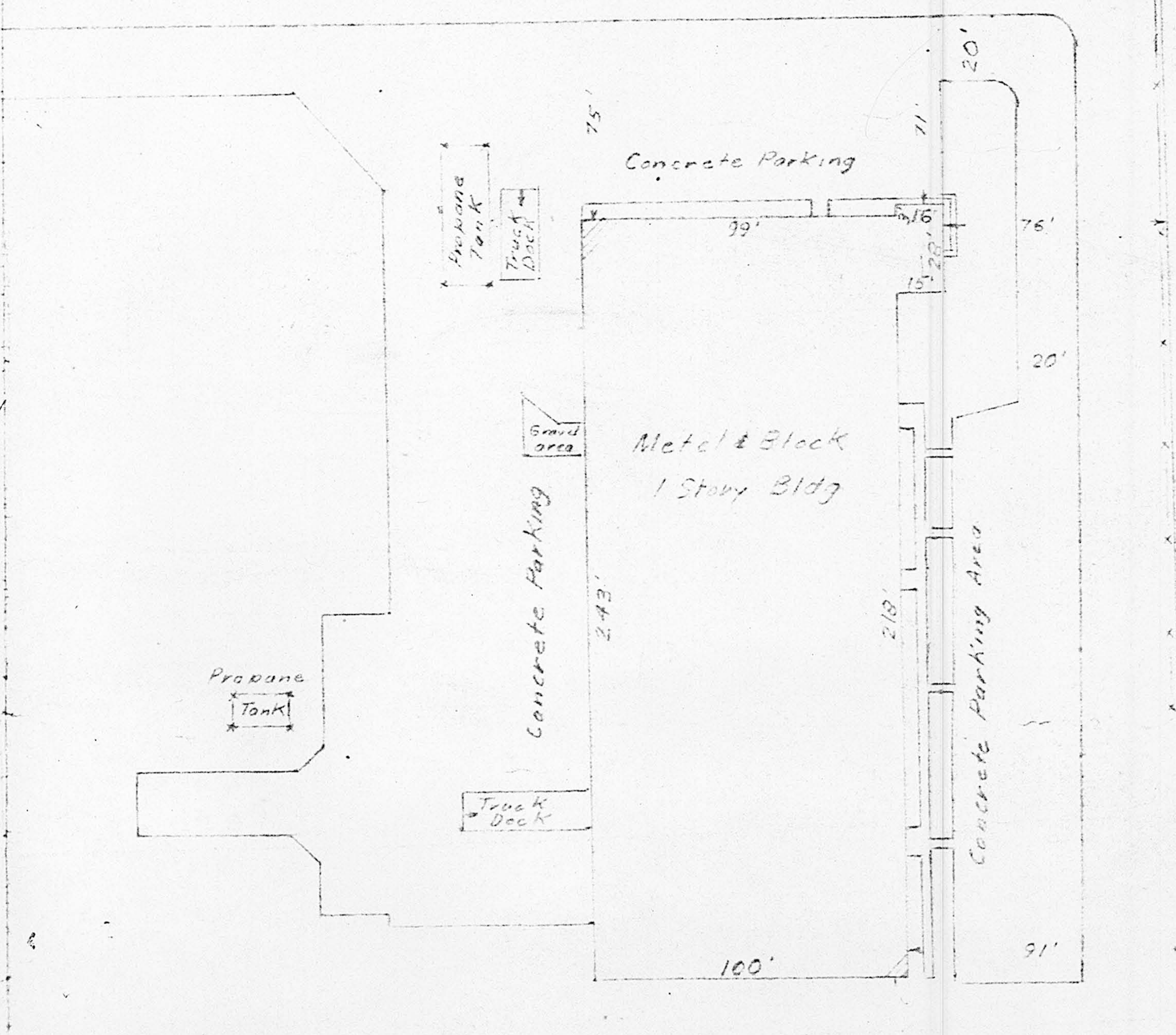
Mills Industrial Parkway 60' E 2233.40' N 69° 06' 00" E

-191
10.88 A

-190
6.14 A

A 20' Water Line Easement VIII-7-P 75.3'

61.98' 11.00° 30' 00" W 389.18'



N 59° 06' 00" E 494.19'

90° 48' 00"

Sanitary Sewer

S 00° 06' 00" E 537.00

89° 12' 00"

V.I. Pipe
Joycox Rd 60'