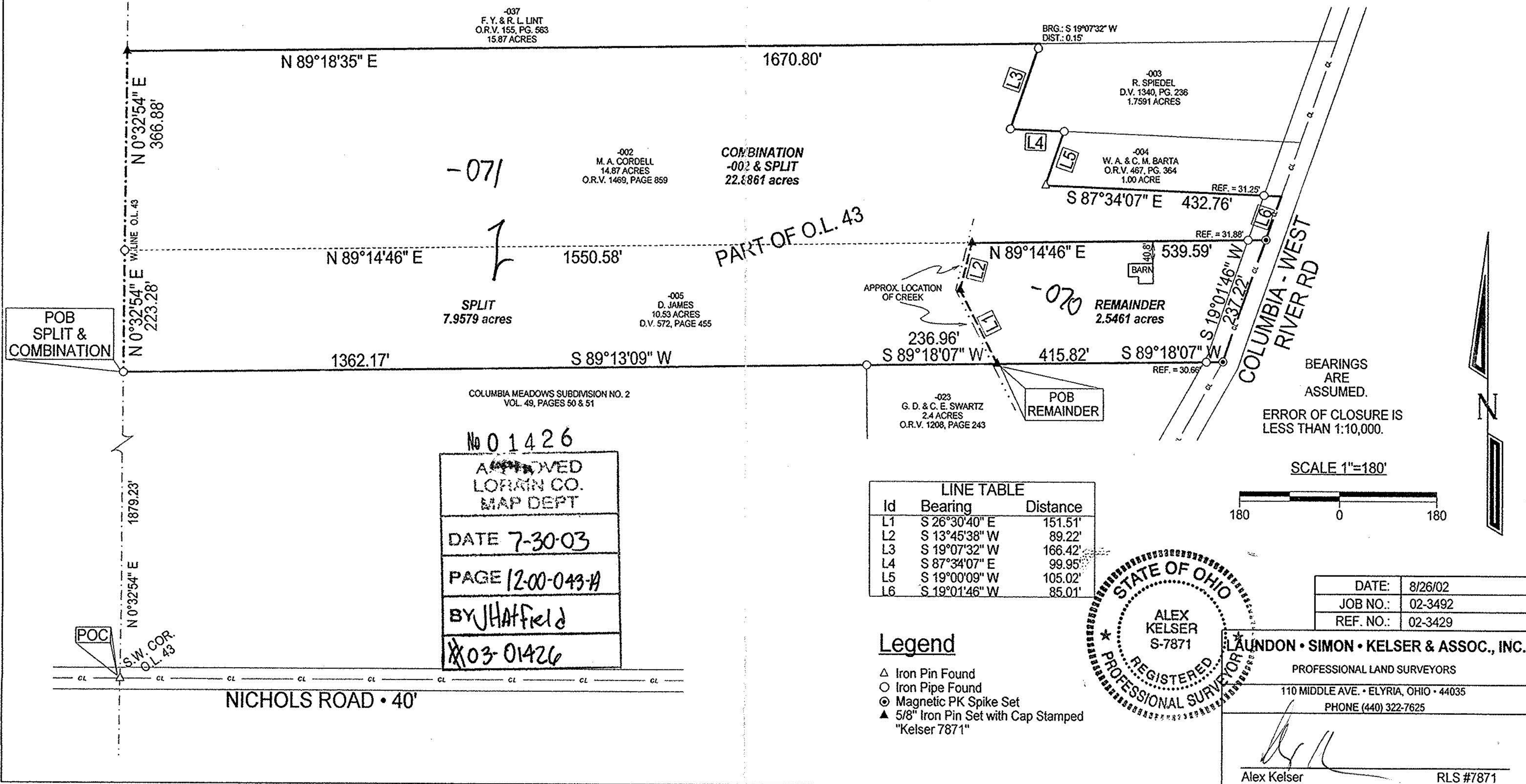


PLAT OF BOUNDARY SURVEY
DOROTHY JAMES
 PART OF ORIGINAL LOT 43
 TOWNSHIP OF COLUMBIA, LORAIN COUNTY, OHIO



-037
 F. Y. & R. L. LINT
 O.R.V. 155, PG. 563
 15.87 ACRES

-002
 M. A. CORDELL
 14.87 ACRES
 O.R.V. 1469, PAGE 859

COMBINATION
 -002 & SPLIT
 22.8861 acres

BRG.: S 19°07'32" W
 DIST.: 0.15'

-003
 R. SPIEDEL
 D.V. 1340, PG. 236
 1.7591 ACRES

-004
 W. A. & C. M. BARTA
 O.R.V. 467, PG. 364
 1.00 ACRE

-005
 D. JAMES
 10.53 ACRES
 D.V. 572, PAGE 455

REMAINDER
 2.5461 acres

-023
 G. D. & C. E. SWARTZ
 2.4 ACRES
 O.R.V. 1208, PAGE 243

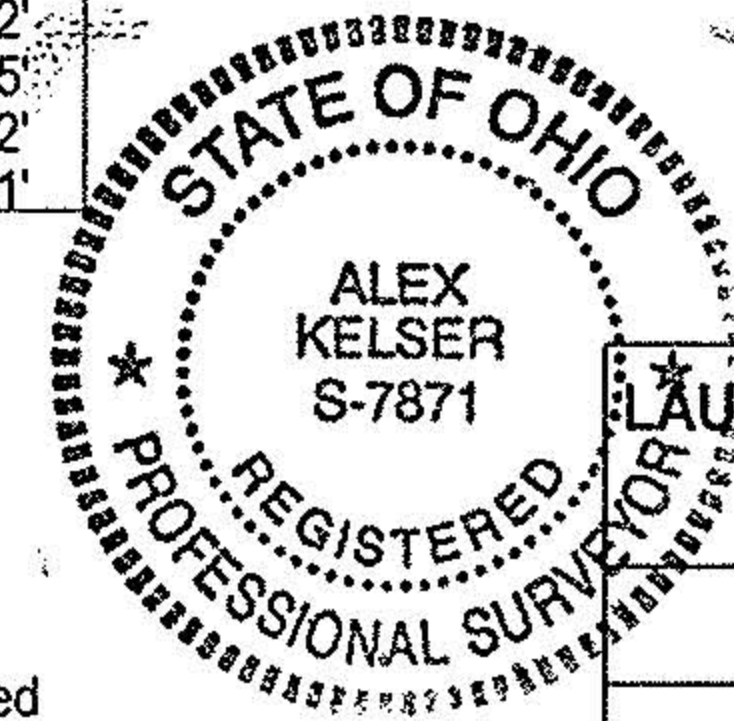
COLUMBIA MEADOWS SUBDIVISION NO. 2
 VOL. 49, PAGES 50 & 51

No 01426
 APPROVED
 LORAIN CO.
 MAP DEPT
 DATE 7-30-03
 PAGE 1200-043-A
 BY J Hatfield
 03-01426

LINE TABLE		
Id	Bearing	Distance
L1	S 26°30'40" E	151.51'
L2	S 13°45'38" W	89.22'
L3	S 19°07'32" W	166.42'
L4	S 87°34'07" E	99.95'
L5	S 19°00'09" W	105.02'
L6	S 19°01'46" W	85.01'

Legend

- △ Iron Pin Found
- Iron Pipe Found
- ⊙ Magnetic PK Spike Set
- ▲ 5/8" Iron Pin Set with Cap Stamped "Kelser 7871"



DATE:	8/26/02
JOB NO.:	02-3492
REF. NO.:	02-3429

LAUNDON • SIMON • KELSER & ASSOC., INC.
 PROFESSIONAL LAND SURVEYORS
 110 MIDDLE AVE. • ELYRIA, OHIO • 44035
 PHONE (440) 322-7625
 Alex Kelser RLS #7871

BEARINGS ARE ASSUMED.
 ERROR OF CLOSURE IS LESS THAN 1:10,000.

SCALE 1"=180'



NICHOLS ROAD • 40'

POB SPLIT & COMBINATION

POB REMAINDER

POC
 S.W. COR.
 O.L. 43

-071

-070

PART OF O.L. 43

SPLIT
 7.9579 acres

N 0°32'54" E
 366.88'
 N 0°32'54" E
 223.28'
 W LINE O.L. 43

N 0°32'54" E
 1879.23'

N 89°18'35" E
 1670.80'

N 89°14'46" E
 1550.58'

1362.17'

S 89°13'09" W

1670.80'

1550.58'

236.96'

S 89°18'07" W

415.82'

S 89°18'07" W

S 87°34'07" E
 432.76'

REF. = 31.25'

REF. = 31.88'

REF. = 30.66'

REF. = 30.66'

REF. = 30.66'

REF. = 30.66'

REF. = 30.66'

REF. = 30.66'

REF. = 30.66'

REF. = 30.66'

REF. = 30.66'

REF. = 30.66'

REF. = 30.66'

REF. = 30.66'

REF. = 30.66'

REF. = 30.66'

REF. = 30.66'

REF. = 30.66'

REF. = 30.66'

REF. = 30.66'

REF. = 30.66'

REF. = 30.66'

REF. = 30.66'

REF. = 30.66'

REF. = 30.66'

REF. = 30.66'

REF. = 30.66'

REF. = 30.66'

REF. = 30.66'

REF. = 30.66'

REF. = 30.66'

REF. = 30.66'

REF. = 30.66'

REF. = 30.66'

REF. = 30.66'

REF. = 30.66'

REF. = 30.66'

REF. = 30.66'

REF. = 30.66'

REF. = 30.66'

REF. = 30.66'

REF. = 30.66'

REF. = 30.66'

REF. = 30.66'