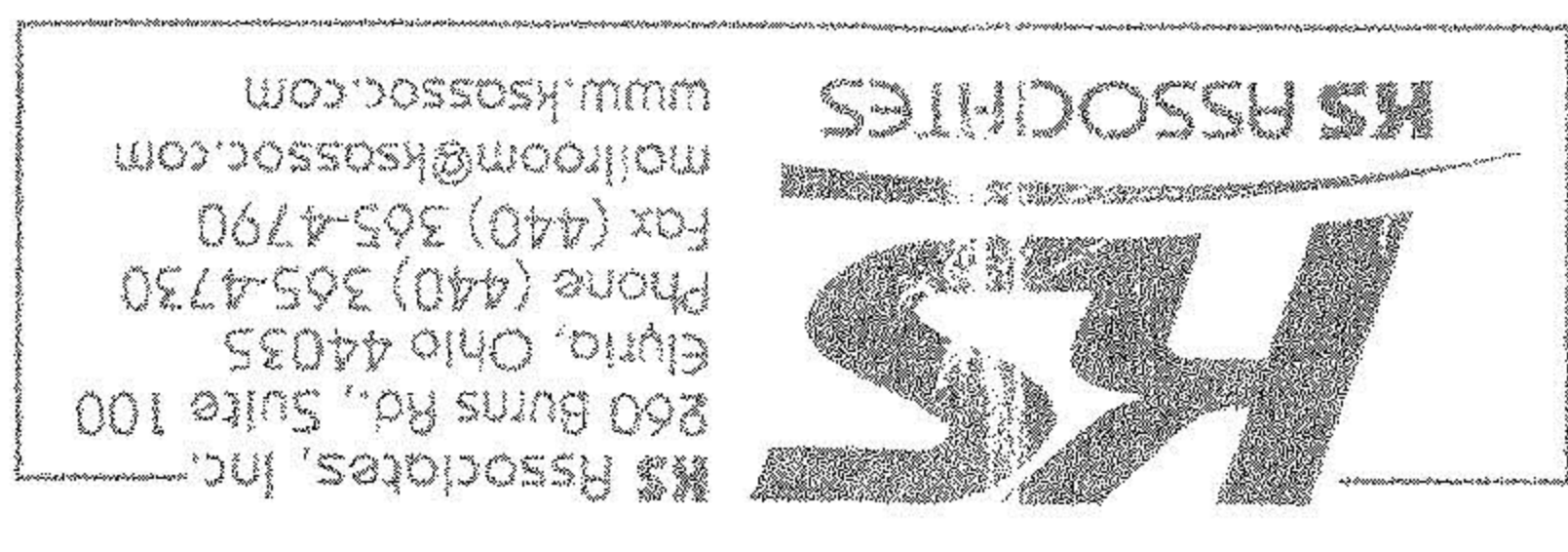


BOUNDARY SURVEY

OF PART OF
ORIGINAL AMHERST TOWNSHIP LOT NOS. 35 & 36
CITY OF AMHERST COUNTY OF LOHAIN STATE OF OHIO



DATE	DESCRIPTION
8/20/03	BAR
	DAWN BY:
	CH'D BY:
	DWG. NAME: 0-SUBRD
	PATH: /02328/1/0017/
	FR.:

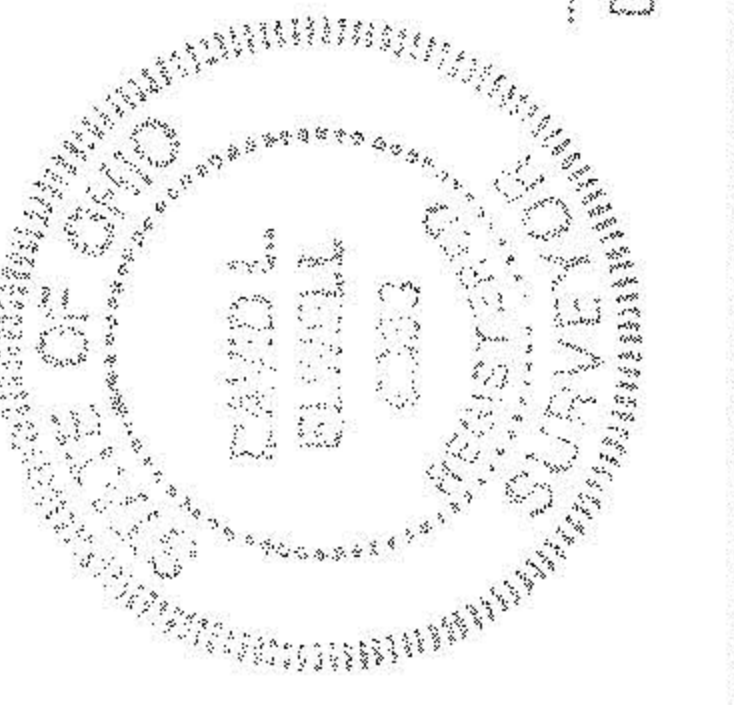
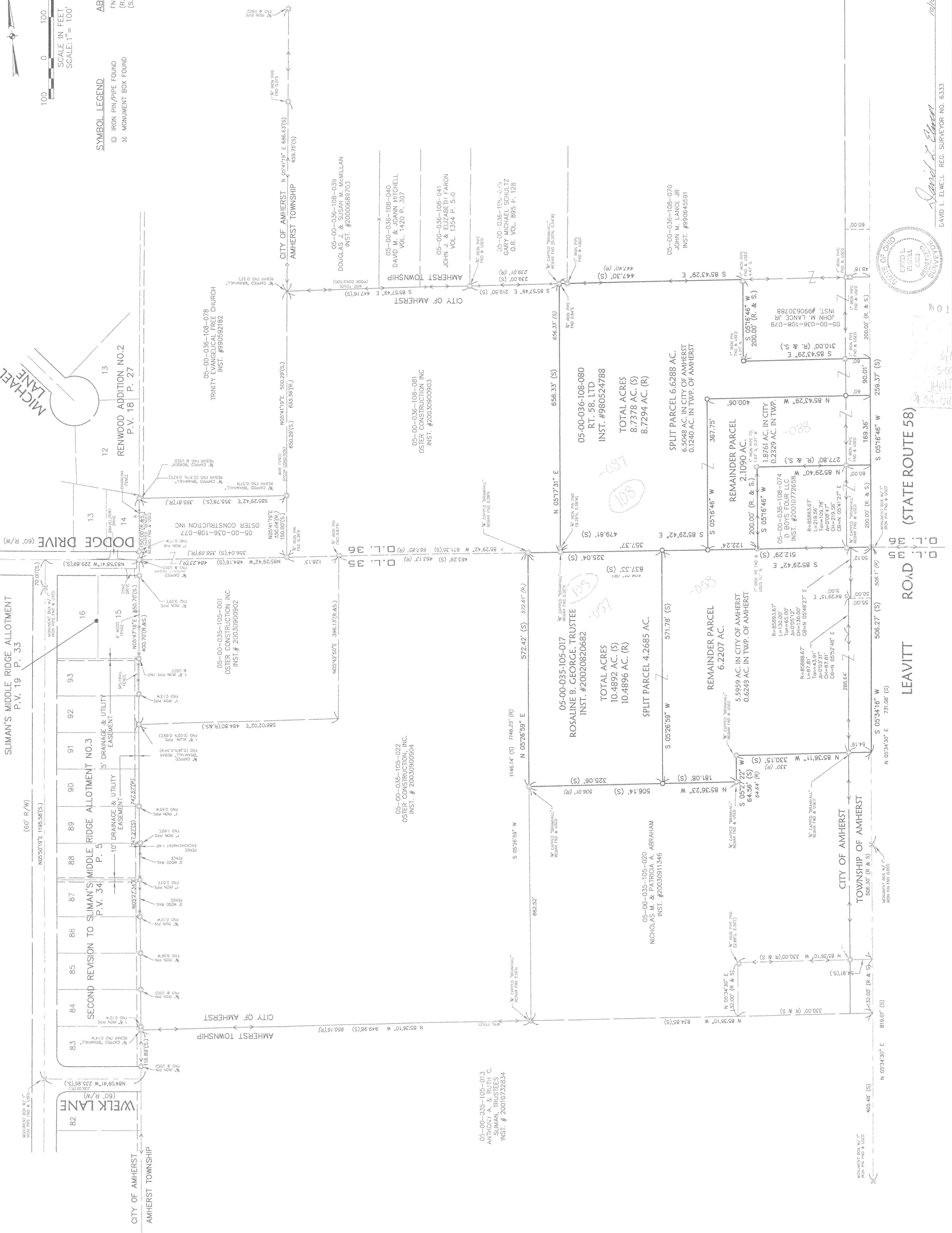
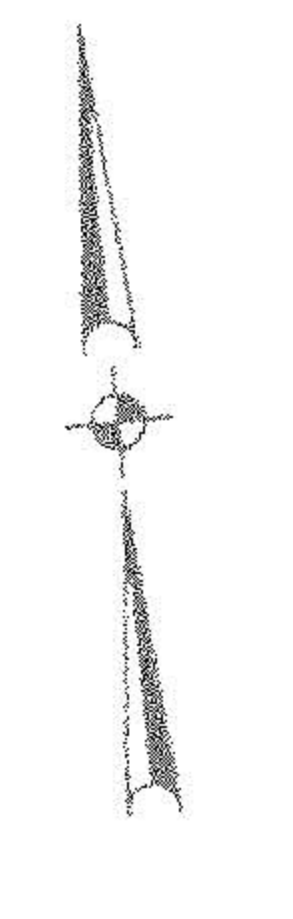
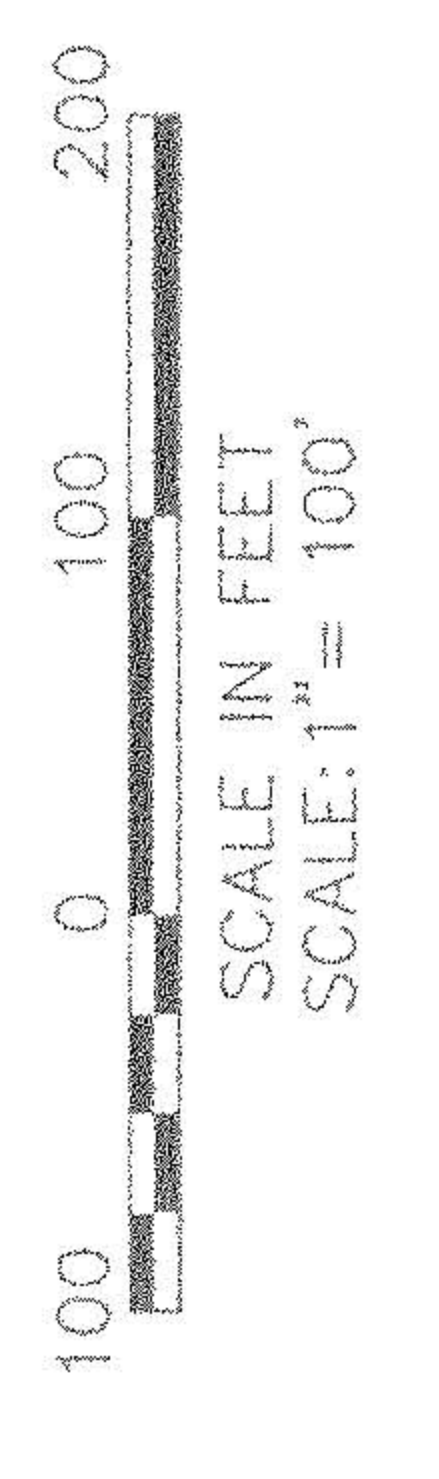
DATE	DESCRIPTION
8-20-03	ORIGINAL ISSUE
8-20-03	REVISED PARCEL SPLIT WITH FROM 80' TO 80'
10-10-03	REVISED PARCEL SPLIT WITH FROM 80' TO 90'

JOB NO. 02308

SHEET 1 OF 1

SYMBOL LEGEND
● IRON PIN/PIPE FOUND
⊠ MONUMENT BOX FOUND

ABBREVIATIONS
FND - FOUND
(R) - RECORD
(S) - SURVEYED



DATE: 10/16/03
REC. SURVEYOR NO. 6333
DAVID L. ELWELL

LEAVITT ROAD (STATE ROUTE 58)

SLIMAN'S MIDDLE RIDGE ALLOTMENT P.V. 19 P. 33

SECOND REVISION TO SLIMAN'S MIDDLE RIDGE ALLOTMENT NO.3 P.V. 34 P. 5

REWOOD ADDITION NO.2 P.V. 18 P. 27

TRINITY EVANGELICAL FREE CHURCH INST. #9810592182

OS-00-036-108-078

OS-00-036-108-077

OS-00-036-108-081

OS-00-036-108-080

OS-00-036-108-079

OS-00-036-108-078

OS-00-036-108-077

OS-00-036-108-076

OS-00-036-108-075

OS-00-036-108-074

OS-00-036-108-073

OS-00-036-108-072

OS-00-036-108-071

OS-00-036-108-070

OS-00-036-108-069

OS-00-036-108-068

OS-00-036-108-067

OS-00-036-108-066

OS-00-036-108-065

OS-00-036-108-064

OS-00-036-108-063

OS-00-036-108-062

OS-00-036-108-061

OS-00-036-108-060

OS-00-036-108-059

OS-00-036-108-058

OS-00-035-105-013

OS-00-035-105-012

OS-00-035-105-011

OS-00-035-105-010

OS-00-035-105-009

OS-00-035-105-008

OS-00-035-105-007

OS-00-035-105-006

OS-00-035-105-005

OS-00-035-105-004

OS-00-035-105-003

OS-00-035-105-002

OS-00-035-105-001

OS-00-035-105-000

OS-00-035-105-000

OS-00-035-105-000

OS-00-035-105-000

OS-00-035-105-000

OS-00-035-105-000

OS-00-035-105-000

OS-00-035-105-000

OS-00-035-105-000

OS-00-035-105-000

OS-00-035-105-000

OS-00-035-105-000

OS-00-035-105-000

OS-00-035-105-000

OS-00-035-105-000

OS-00-035-105-000

OS-00-035-105-000

OS-00-035-105-000

OS-00-035-105-000