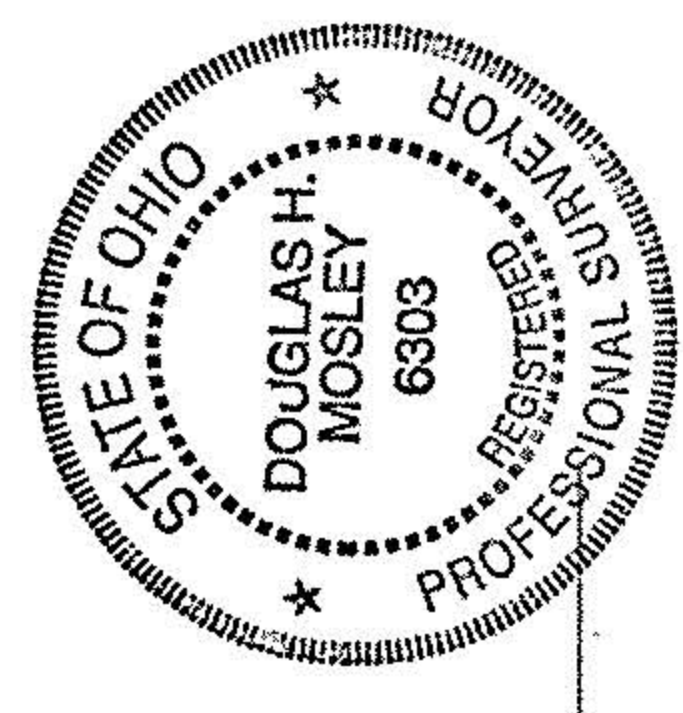


**SURVEYOR'S CERTIFICATE**  
 SITUATED IN THE TOWNSHIP OF CARLISLE, COUNTY OF LORAIN, STATE OF OHIO, KNOW ALL MEN BY THESE PRESENTS, THAT I, THE UNDERSIGNED, DO HEREBY CERTIFY THAT I HAVE SURVEYED THE PREMISES AND PREPARED THIS MAP AND THAT SAID MAP IS CORRECT.



*Douglas Mosley*  
 DOUGLAS MOSLEY  
 REGISTERED SURVEYOR NO. 6303

**LEGEND OF SYMBOLS & LINETYPES**

- IRON PIN
- ⊙ CENTERLINE
- ℞ RIGHT-OF-WAY LINE
- ▭ MONUMENT BOX
- CENTERLINE RIGHT-OF-WAY
- RIGHT-OF-WAY LINE
- PROPERTY LINE
- PROPOSED PROPERTY

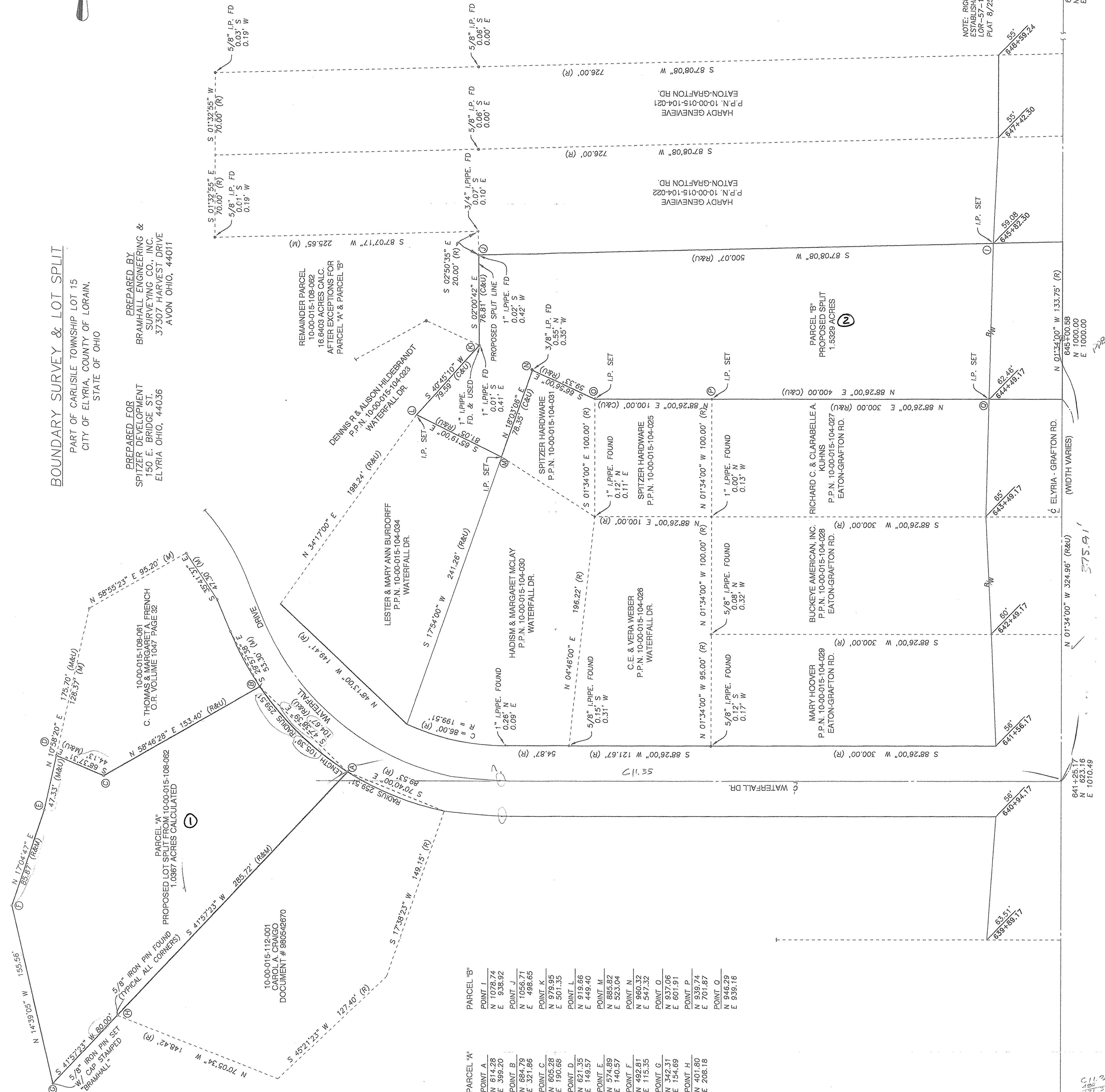
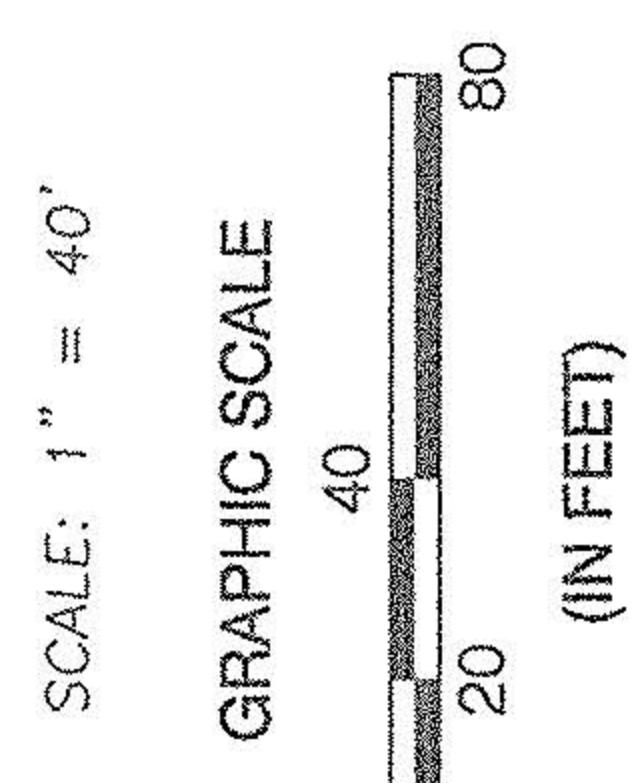
#00292

APPROVED	#99-00292
LORAIN CO. MAP DEPT.	
DATE 12-30-99	BY <i>[Signature]</i>
PAGE 10 of 15-D	

**BOUNDARY SURVEY & LOT SPLIT**  
 PART OF CARLISLE TOWNSHIP LOT 15  
 CITY OF ELYRIA, COUNTY OF LORAIN,  
 STATE OF OHIO

PREPARED FOR  
 SPITZER DEVELOPMENT  
 150 E. BRIDGE ST.  
 ELYRIA OHIO, 44036

PREPARED BY  
 BRAMHALL ENGINEERING &  
 SURVEYING CO., INC.  
 37307 HARVEST DRIVE  
 AVON OHIO, 44011



PARCEL "A"		PARCEL "B"	
POINT A	N 514.28	POINT I	N 1028.74
POINT B	E 389.20	POINT J	E 938.92
POINT C	N 684.79	POINT K	N 1056.71
POINT D	E 321.86	POINT L	E 498.65
POINT E	N 605.28	POINT M	N 979.95
POINT F	E 190.68	POINT N	E 501.35
POINT G	N 621.35	POINT O	N 919.66
POINT H	E 149.57	POINT P	E 449.40
POINT I	N 574.89	POINT Q	N 885.82
POINT J	E 140.57	POINT R	E 523.04
POINT K	N 492.81	POINT S	N 960.32
POINT L	E 115.35	POINT T	E 547.32
POINT M	N 342.31	POINT U	N 937.06
POINT N	E 134.69	POINT V	E 601.91
POINT O	N 401.80	POINT W	N 939.74
POINT P	E 208.18	POINT X	E 701.87
POINT Q		POINT Y	N 946.29
POINT R		POINT Z	E 939.16

DATE: 08/08/99  
 JOB NO. 98-448

NOTE: RIGHT-OF-WAY LIMITS ESTABLISHED PER 0007 PROJECT LOR-57-117, RIGHT OF WAY PLAT 8/25/61

634+28.19

641+26.17  
 N 01°34'00" W  
 E 1010.49

642+49.17  
 S 88°26'00" W  
 E 300.00

643+49.17  
 S 88°26'00" W  
 E 300.00

644+49.17  
 S 88°26'00" W  
 E 300.00

645+49.17  
 S 88°26'00" W  
 E 300.00

646+49.17  
 S 88°26'00" W  
 E 300.00

647+49.17  
 S 88°26'00" W  
 E 300.00

648+49.17  
 S 88°26'00" W  
 E 300.00

649+49.17  
 S 88°26'00" W  
 E 300.00

650+49.17  
 S 88°26'00" W  
 E 300.00

651+49.17  
 S 88°26'00" W  
 E 300.00

652+49.17  
 S 88°26'00" W  
 E 300.00

653+49.17  
 S 88°26'00" W  
 E 300.00

654+49.17  
 S 88°26'00" W  
 E 300.00

655+49.17  
 S 88°26'00" W  
 E 300.00

656+49.17  
 S 88°26'00" W  
 E 300.00

657+49.17  
 S 88°26'00" W  
 E 300.00

658+49.17  
 S 88°26'00" W  
 E 300.00

659+49.17  
 S 88°26'00" W  
 E 300.00

660+49.17  
 S 88°26'00" W  
 E 300.00

661+49.17  
 S 88°26'00" W  
 E 300.00

662+49.17  
 S 88°26'00" W  
 E 300.00

663+49.17  
 S 88°26'00" W  
 E 300.00

664+49.17  
 S 88°26'00" W  
 E 300.00

665+49.17  
 S 88°26'00" W  
 E 300.00

666+49.17  
 S 88°26'00" W  
 E 300.00

667+49.17  
 S 88°26'00" W  
 E 300.00

668+49.17  
 S 88°26'00" W  
 E 300.00

669+49.17  
 S 88°26'00" W  
 E 300.00

670+49.17  
 S 88°26'00" W  
 E 300.00

671+49.17  
 S 88°26'00" W  
 E 300.00

672+49.17  
 S 88°26'00" W  
 E 300.00

673+49.17  
 S 88°26'00" W  
 E 300.00

674+49.17  
 S 88°26'00" W  
 E 300.00

675+49.17  
 S 88°26'00" W  
 E 300.00

676+49.17  
 S 88°26'00" W  
 E 300.00

677+49.17  
 S 88°26'00" W  
 E 300.00

678+49.17  
 S 88°26'00" W  
 E 300.00

679+49.17  
 S 88°26'00" W  
 E 300.00

680+49.17  
 S 88°26'00" W  
 E 300.00

681+49.17  
 S 88°26'00" W  
 E 300.00

682+49.17  
 S 88°26'00" W  
 E 300.00

683+49.17  
 S 88°26'00" W  
 E 300.00

684+49.17  
 S 88°26'00" W  
 E 300.00

685+49.17  
 S 88°26'00" W  
 E 300.00

686+49.17  
 S 88°26'00" W  
 E 300.00

687+49.17  
 S 88°26'00" W  
 E 300.00

688+49.17  
 S 88°26'00" W  
 E 300.00

689+49.17  
 S 88°26'00" W  
 E 300.00

690+49.17  
 S 88°26'00" W  
 E 300.00

691+49.17  
 S 88°26'00" W  
 E 300.00

692+49.17  
 S 88°26'00" W  
 E 300.00

693+49.17  
 S 88°26'00" W  
 E 300.00

694+49.17  
 S 88°26'00" W  
 E 300.00

695+49.17  
 S 88°26'00" W  
 E 300.00

696+49.17  
 S 88°26'00" W  
 E 300.00

697+49.17  
 S 88°26'00" W  
 E 300.00

698+49.17  
 S 88°26'00" W  
 E 300.00

699+49.17  
 S 88°26'00" W  
 E 300.00

700+49.17  
 S 88°26'00" W  
 E 300.00

701+49.17  
 S 88°26'00" W  
 E 300.00

702+49.17  
 S 88°26'00" W  
 E 300.00

703+49.17  
 S 88°26'00" W  
 E 300.00

704+49.17  
 S 88°26'00" W  
 E 300.00

705+49.17  
 S 88°26'00" W  
 E 300.00

706+49.17  
 S 88°26'00" W  
 E 300.00

707+49.17  
 S 88°26'00" W  
 E 300.00

708+49.17  
 S 88°26'00" W  
 E 300.00

709+49.17  
 S 88°26'00" W  
 E 300.00

710+49.17  
 S 88°26'00" W  
 E 300.00

711+49.17  
 S 88°26'00" W  
 E 300.00

712+49.17  
 S 88°26'00" W  
 E 300.00

713+49.17  
 S 88°26'00" W  
 E 300.00

714+49.17  
 S 88°26'00" W  
 E 300.00

715+49.17  
 S 88°26'00" W  
 E 300.00

716+49.17  
 S 88°26'00" W  
 E 300.00

717+49.17  
 S 88°26'00" W  
 E 300.00

718+49.17  
 S 88°26'00" W  
 E 300.00

719+49.17  
 S 88°26'00" W  
 E 300.00

720+49.17  
 S 88°26'00" W  
 E 300.00

721+49.17  
 S 88°26'00" W  
 E 300.00

722+49.17  
 S 88°26'00" W  
 E 300.00

723+49.17  
 S 88°26'00" W  
 E 300.00

724+49.17  
 S 88°26'00" W  
 E 300.00

725+49.17  
 S 88°26'00" W  
 E 300.00

726+49.17  
 S 88°26'00" W  
 E 300.00

727+49.17  
 S 88°26'00" W  
 E 300.00

728+49.17  
 S 88°26'00" W  
 E 300.00

729+49.17  
 S 88°26'00" W  
 E 300.00