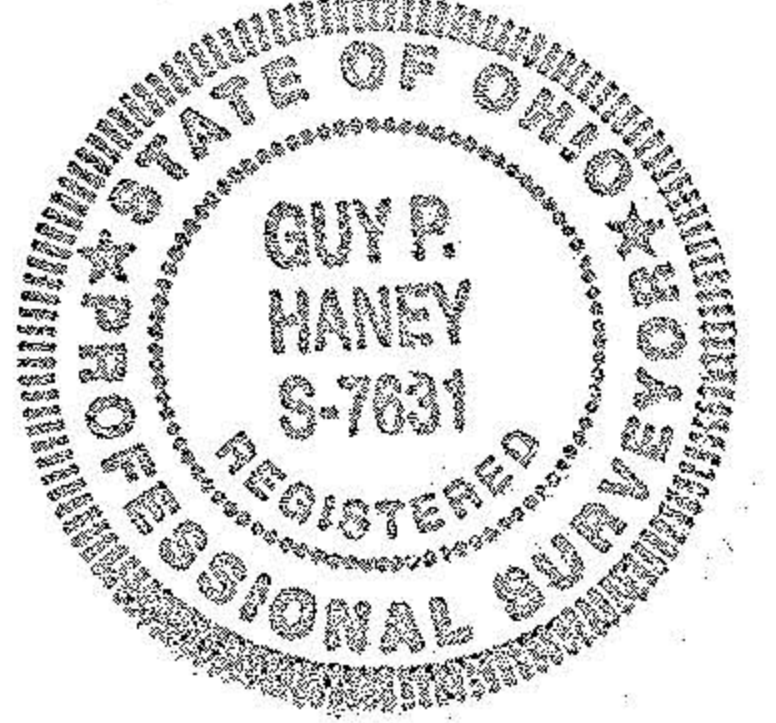


# PLAT OF SURVEY

County of LORAIN State of Ohio  
 Township HUNTINGTON  
 Twp. lot 20 Tr. 386 17  
 City or Village \_\_\_\_\_ Lot \_\_\_\_\_  
 Subdivision \_\_\_\_\_ Lot \_\_\_\_\_  
 Prop. Owner MCK, INC.  
 Date JANUARY 1999 Scale 1" = 200'  
 REVISED: DECEMBER 1999  
 REVISED: FEBRUARY 2000

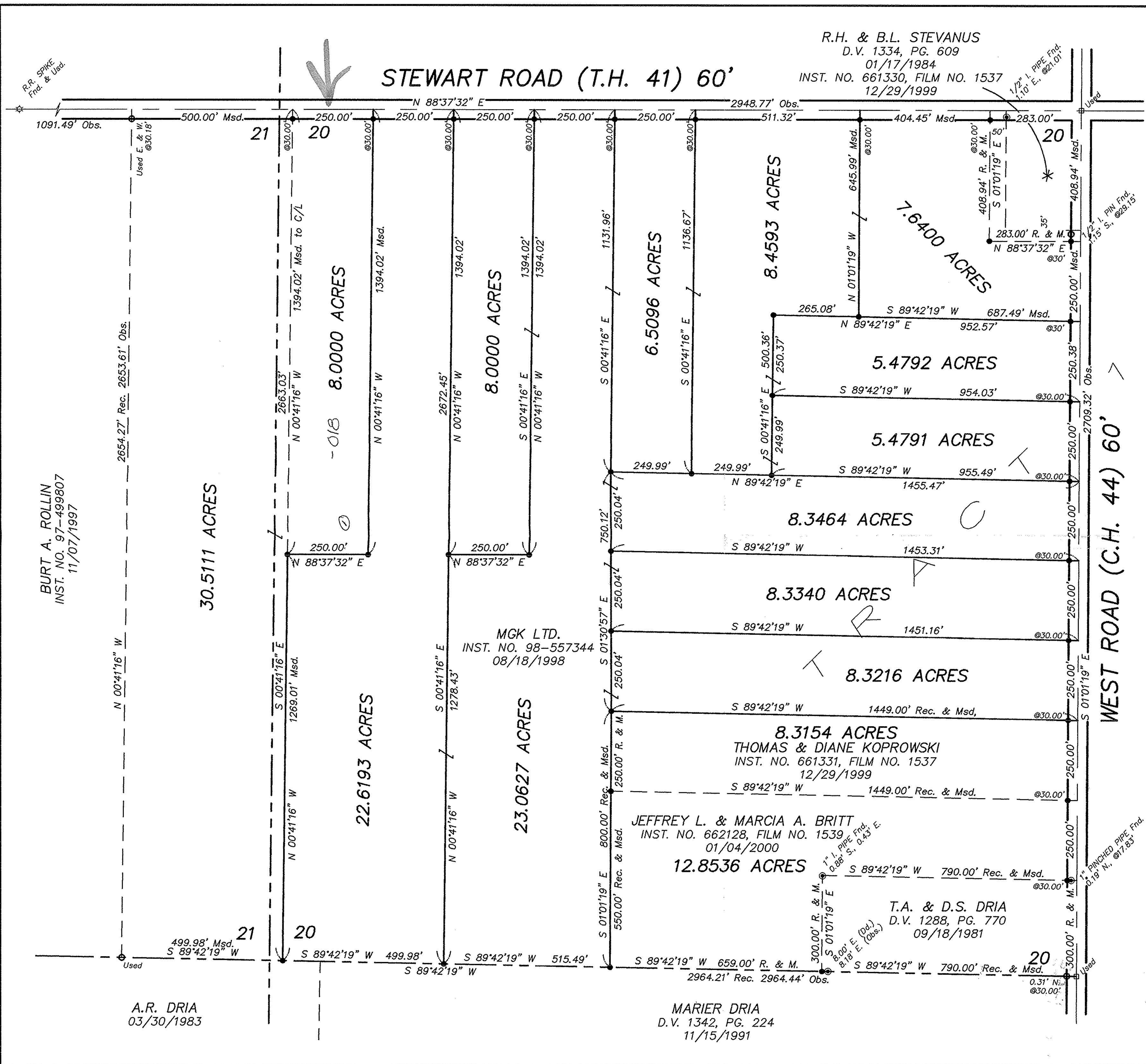
By \_\_\_\_\_  
 Professional Surveyor No. S-7631



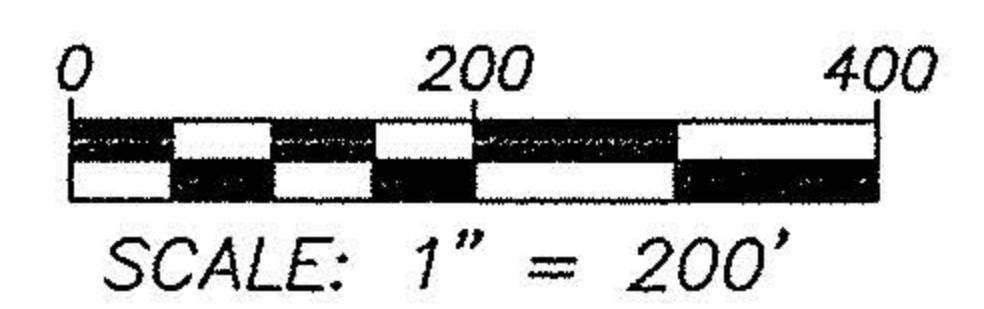
R.H. & B.L. STEVANUS  
 D.V. 1334, PG. 609  
 01/17/1984  
 INST. NO. 661330, FILM NO. 1537  
 12/29/1999

STEWART ROAD (T.H. 41) 60'

WEST ROAD (C.H. 44) 60'



- LEGEND**
- - 5/8" IRON PIN FOUND (NO CAP)
  - ⊙ - IRON PIPE FOUND
  - - 5/8" IRON PIN IN MON. BOX (ALUMINUM CAP)
  - - 5/8" IRON PIN SET W/CAP ROLLING-HOCEVAR
  - Fnd. - FOUND
  - Msd. - MEASURED
  - Obs. - OBSERVED
  - Rec. - RECORD
  - Usd. - USED



NOTE: BEARINGS ARE BASED ON AN ASSUMED MERIDIAN AND ARE USED HEREON TO INDICATE ANGLES ONLY.

#00552  
 APPROVED  
 LORAIN CO.  
 MAP DEPT.  
 DATE 9/8/00  
 PAGE 21-H  
 BY T. SPILLMAN  
 JOB NO. 100552



CIVIL ENGINEERING SURVEYING  
 140 WEST WASHINGTON STREET  
 MEDINA, OHIO (330)723-1828  
 FAX: (330)723-6637

PROJECT No. 30,608\_5

BURT A. ROLLIN  
 INST. NO. 97-499807  
 11/07/1997

A.R. DRIA  
 03/30/1983

MARIER DRIA  
 D.V. 1342, PG. 224  
 11/15/1991

JEFFREY L. & MARCIA A. BRITT  
 INST. NO. 662128, FILM NO. 1539  
 01/04/2000

T.A. & D.S. DRIA  
 D.V. 1288, PG. 770  
 09/18/1981

MCK LTD.  
 INST. NO. 98-557344  
 08/18/1998

THOMAS & DIANE KOPROWSKI  
 INST. NO. 661331, FILM NO. 1537  
 12/29/1999

8.4593 ACRES  
 7.6400 ACRES  
 6.5096 ACRES  
 8.0000 ACRES  
 8.0000 ACRES  
 8.3464 ACRES  
 8.3340 ACRES  
 8.3216 ACRES  
 8.3154 ACRES  
 12.8536 ACRES  
 5.4792 ACRES  
 5.4791 ACRES

30.5111 ACRES

22.6193 ACRES

23.0627 ACRES

8.0000 ACRES

6.5096 ACRES

8.4593 ACRES

5.4792 ACRES

5.4791 ACRES

8.3464 ACRES

8.3340 ACRES

8.3216 ACRES

THOMAS & DIANE KOPROWSKI  
 INST. NO. 661331, FILM NO. 1537  
 12/29/1999

JEFFREY L. & MARCIA A. BRITT  
 INST. NO. 662128, FILM NO. 1539  
 01/04/2000

T.A. & D.S. DRIA  
 D.V. 1288, PG. 770  
 09/18/1981

MCK LTD.  
 INST. NO. 98-557344  
 08/18/1998

THOMAS & DIANE KOPROWSKI  
 INST. NO. 661331, FILM NO. 1537  
 12/29/1999

8.4593 ACRES  
 7.6400 ACRES  
 6.5096 ACRES  
 8.0000 ACRES  
 8.0000 ACRES  
 8.3464 ACRES  
 8.3340 ACRES  
 8.3216 ACRES  
 8.3154 ACRES  
 12.8536 ACRES  
 5.4792 ACRES  
 5.4791 ACRES

30.5111 ACRES

22.6193 ACRES

23.0627 ACRES

8.0000 ACRES

6.5096 ACRES

8.4593 ACRES

5.4792 ACRES

5.4791 ACRES

8.3464 ACRES

8.3340 ACRES

8.3216 ACRES

THOMAS & DIANE KOPROWSKI  
 INST. NO. 661331, FILM NO. 1537  
 12/29/1999

JEFFREY L. & MARCIA A. BRITT  
 INST. NO. 662128, FILM NO. 1539  
 01/04/2000

T.A. & D.S. DRIA  
 D.V. 1288, PG. 770  
 09/18/1981

MCK LTD.  
 INST. NO. 98-557344  
 08/18/1998

THOMAS & DIANE KOPROWSKI  
 INST. NO. 661331, FILM NO. 1537  
 12/29/1999

8.4593 ACRES  
 7.6400 ACRES  
 6.5096 ACRES  
 8.0000 ACRES  
 8.0000 ACRES  
 8.3464 ACRES  
 8.3340 ACRES  
 8.3216 ACRES  
 8.3154 ACRES  
 12.8536 ACRES  
 5.4792 ACRES  
 5.4791 ACRES

30.5111 ACRES

22.6193 ACRES

23.0627 ACRES

8.0000 ACRES

6.5096 ACRES

8.4593 ACRES

5.4792 ACRES

5.4791 ACRES

8.3464 ACRES

8.3340 ACRES

8.3216 ACRES

THOMAS & DIANE KOPROWSKI  
 INST. NO. 661331, FILM NO. 1537  
 12/29/1999

JEFFREY L. & MARCIA A. BRITT  
 INST. NO. 662128, FILM NO. 1539  
 01/04/2000

T.A. & D.S. DRIA  
 D.V. 1288, PG. 770  
 09/18/1981

MCK LTD.  
 INST. NO. 98-557344  
 08/18/1998

THOMAS & DIANE KOPROWSKI  
 INST. NO. 661331, FILM NO. 1537  
 12/29/1999

8.4593 ACRES  
 7.6400 ACRES  
 6.5096 ACRES  
 8.0000 ACRES  
 8.0000 ACRES  
 8.3464 ACRES  
 8.3340 ACRES  
 8.3216 ACRES  
 8.3154 ACRES  
 12.8536 ACRES  
 5.4792 ACRES  
 5.4791 ACRES

30.5111 ACRES

22.6193 ACRES

23.0627 ACRES

8.0000 ACRES

6.5096 ACRES

8.4593 ACRES

5.4792 ACRES

5.4791 ACRES

8.3464 ACRES

8.3340 ACRES

8.3216 ACRES

THOMAS & DIANE KOPROWSKI  
 INST. NO. 661331, FILM NO. 1537  
 12/29/1999

JEFFREY L. & MARCIA A. BRITT  
 INST. NO. 662128, FILM NO. 1539  
 01/04/2000

T.A. & D.S. DRIA  
 D.V. 1288, PG. 770  
 09/18/1981

MCK LTD.  
 INST. NO. 98-557344  
 08/18/1998

THOMAS & DIANE KOPROWSKI  
 INST. NO. 661331, FILM NO. 1537  
 12/29/1999

8.4593 ACRES  
 7.6400 ACRES  
 6.5096 ACRES  
 8.0000 ACRES  
 8.0000 ACRES  
 8.3464 ACRES  
 8.3340 ACRES  
 8.3216 ACRES  
 8.3154 ACRES  
 12.8536 ACRES  
 5.4792 ACRES  
 5.4791 ACRES

30.5111 ACRES

22.6193 ACRES

23.0627 ACRES

8.0000 ACRES

6.5096 ACRES

8.4593 ACRES

5.4792 ACRES

5.4791 ACRES

8.3464 ACRES

8.3340 ACRES

8.3216 ACRES

THOMAS & DIANE KOPROWSKI  
 INST. NO. 661331, FILM NO. 1537  
 12/29/1999

JEFFREY L. & MARCIA A. BRITT  
 INST. NO. 662128, FILM NO. 1539  
 01/04/2000

T.A. & D.S. DRIA  
 D.V. 1288, PG. 770  
 09/18/1981

MCK LTD.  
 INST. NO. 98-557344  
 08/18/1998

THOMAS & DIANE KOPROWSKI  
 INST. NO. 661331, FILM NO. 1537  
 12/29/1999

8.4593 ACRES  
 7.6400 ACRES  
 6.5096 ACRES  
 8.0000 ACRES  
 8.0000 ACRES  
 8.3464 ACRES  
 8.3340 ACRES  
 8.3216 ACRES  
 8.3154 ACRES  
 12.8536 ACRES  
 5.4792 ACRES  
 5.4791 ACRES

30.5111 ACRES

22.6193 ACRES

23.0627 ACRES

8.0000 ACRES

6.5096 ACRES

8.4593 ACRES

5.4792 ACRES

5.4791 ACRES

8.3464 ACRES

8.3340 ACRES

8.3216 ACRES

THOMAS & DIANE KOPROWSKI  
 INST. NO. 661331, FILM NO. 1537  
 12/29/1999

JEFFREY L. & MARCIA A. BRITT  
 INST. NO. 662128, FILM NO. 1539  
 01/04/2000

T.A. & D.S. DRIA  
 D.V. 1288, PG. 770  
 09/18/1981

MCK LTD.  
 INST. NO. 98-557344  
 08/18/1998

THOMAS & DIANE KOPROWSKI  
 INST. NO. 661331, FILM NO. 1537  
 12/29/1999

8.4593 ACRES  
 7.6400 ACRES  
 6.5096 ACRES  
 8.0000 ACRES  
 8.0000 ACRES  
 8.3464 ACRES  
 8.3340 ACRES  
 8.3216 ACRES  
 8.3154 ACRES  
 12.8536 ACRES  
 5.4792 ACRES  
 5.4791 ACRES

30.5111 ACRES

22.6193 ACRES

23.0627 ACRES

8.0000 ACRES

6.5096 ACRES

8.4593 ACRES

5.4792 ACRES

5.4791 ACRES

8.3464 ACRES

8.3340 ACRES

8.3216 ACRES

THOMAS & DIANE KOPROWSKI  
 INST. NO. 661331, FILM NO. 1537  
 12/29/1999

JEFFREY L. & MARCIA A. BRITT  
 INST. NO. 662128, FILM NO. 1539  
 01/04/2000

T.A. & D.S. DRIA  
 D.V. 1288, PG. 770  
 09/18/1981

MCK LTD.  
 INST. NO. 98-557344  
 08/18/1998

THOMAS & DIANE KOPROWSKI  
 INST. NO. 661331, FILM NO. 1537  
 12/29/1999

8.4593 ACRES  
 7.6400 ACRES  
 6.5096 ACRES  
 8.0000 ACRES  
 8.0000 ACRES  
 8.3464 ACRES  
 8.3340 ACRES  
 8.3216 ACRES  
 8.3154 ACRES  
 12.8536 ACRES  
 5.4792 ACRES  
 5.4791 ACRES

30.5111 ACRES

22.6193 ACRES

23.0627 ACRES

8.0000 ACRES

6.5096 ACRES

8.4593 ACRES

5.4792 ACRES

5.4791 ACRES

8.3464 ACRES

8.3340 ACRES

8.3216 ACRES

THOMAS & DIANE KOPROWSKI  
 INST. NO. 661331, FILM NO. 1537  
 12/29/1999

JEFFREY L. & MARCIA A. BRITT  
 INST. NO. 662128, FILM NO. 1539  
 01/04/2000

T.A. & D.S. DRIA  
 D.V. 1288, PG. 770  
 09/18/1981

MCK LTD.  
 INST. NO. 98-557344  
 08/18/1998

THOMAS & DIANE KOPROWSKI  
 INST. NO. 661331, FILM NO. 1537  
 12/29/1999

8.4593 ACRES  
 7.6400 ACRES  
 6.5096 ACRES  
 8.0000 ACRES  
 8.0000 ACRES  
 8.3464 ACRES  
 8.3340 ACRES  
 8.3216 ACRES  
 8.3154 ACRES  
 12.8536 ACRES  
 5.4792 ACRES  
 5.4791 ACRES

30.5111 ACRES

22.6193 ACRES

23.0627 ACRES

8.0000 ACRES

6.5096 ACRES

8.4593 ACRES

5.4792 ACRES

5.4791 ACRES

8.3464 ACRES

8.3340 ACRES

8.3216 ACRES

THOMAS & DIANE KOPROWSKI  
 INST. NO. 661331, FILM NO. 1537  
 12/29/1999

JEFFREY L. & MARCIA A. BRITT  
 INST. NO. 662128, FILM NO. 1539  
 01/04/2000

T.A. & D.S. DRIA  
 D.V. 1288, PG. 770  
 09/18/1981

MCK LTD.  
 INST. NO. 98-557344  
 08/18/1998

THOMAS & DIANE KOPROWSKI  
 INST. NO. 661331, FILM NO. 1537  
 12/29/1999

8.4593 ACRES  
 7.6400 ACRES  
 6.5096 ACRES  
 8.0000 ACRES  
 8.0000 ACRES  
 8.3464 ACRES  
 8.3340 ACRES  
 8.3216 ACRES  
 8.3154 ACRES  
 12.8536 ACRES  
 5.4792 ACRES  
 5.4791 ACRES

30.5111 ACRES

22.6193 ACRES

23.0627 ACRES

8.0000 ACRES