

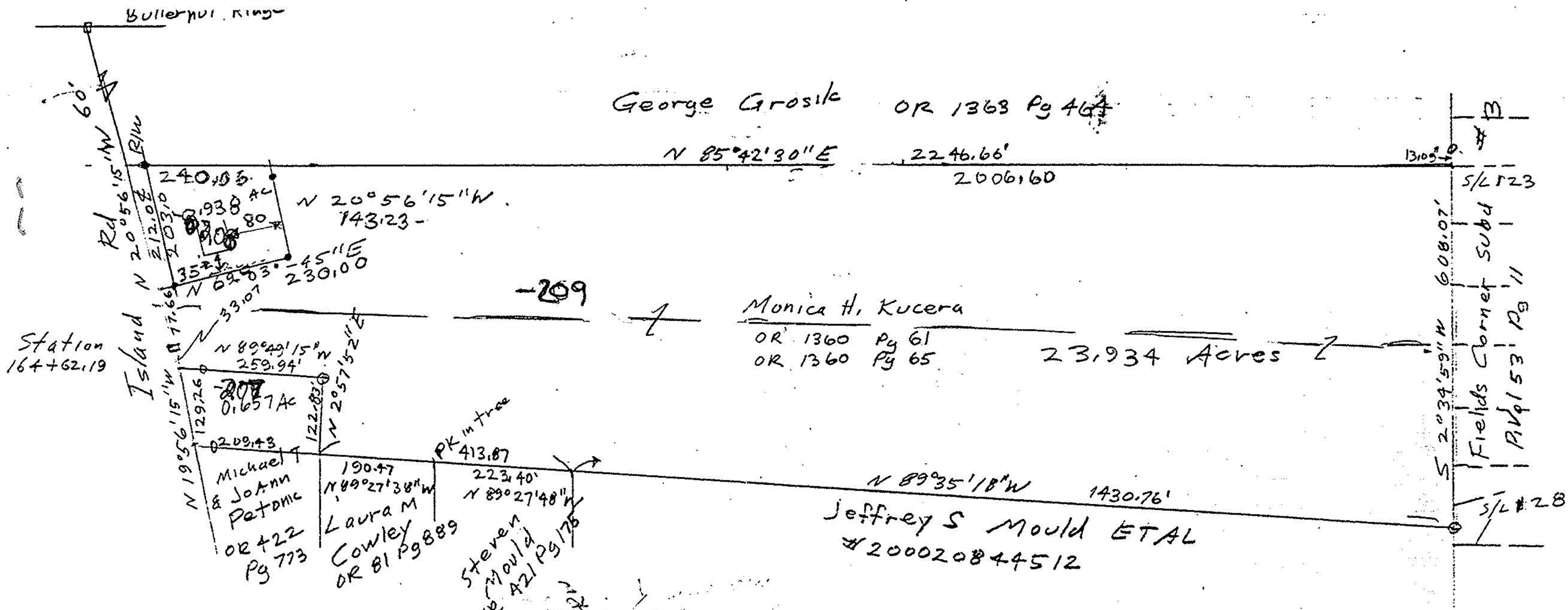
George Grosik OR 1363 Pg 46

N 85°42'30"E 2246.66'
2006160

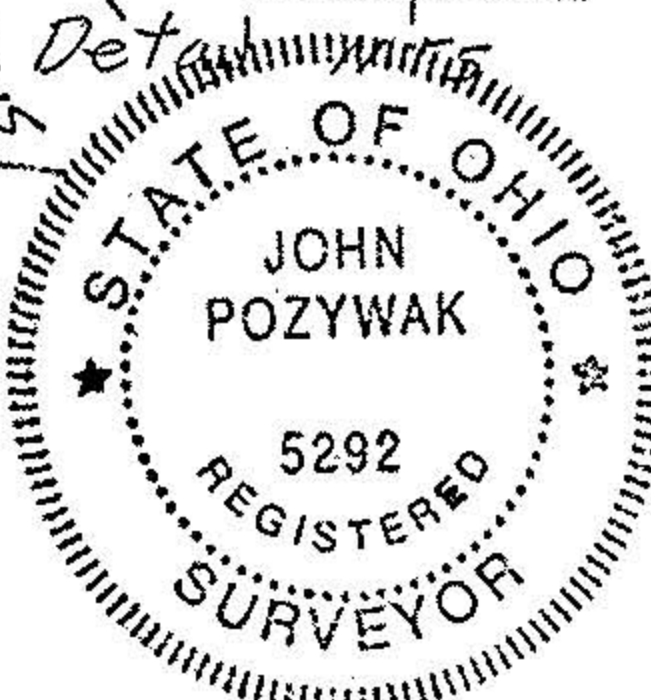
Monica H. Kucera
OR 1360 Pg 61
OR 1360 Pg 65

23,934 Acres

N 89°35'18"W 1430.76'
Jeffrey S Mould ETAL
#200020844512



- Iron pins fd
 - Iron pins set
 - Monument Boxes
- Lorain County Engineer's
Field Book 156 Pg 34



Survey of a Parcel Split
for Monica Kucera
Original Ridgeville Township Lot 13
Lorain County Ohio
Scale 1" = 200' October 2002
John Pozywak Revid May 2003



No 01392

APPROVED LORAIN CO. MAP DEPT
DATE 6-23-03
PAGE 7-00-013-D
BY JHA#field
03-01392