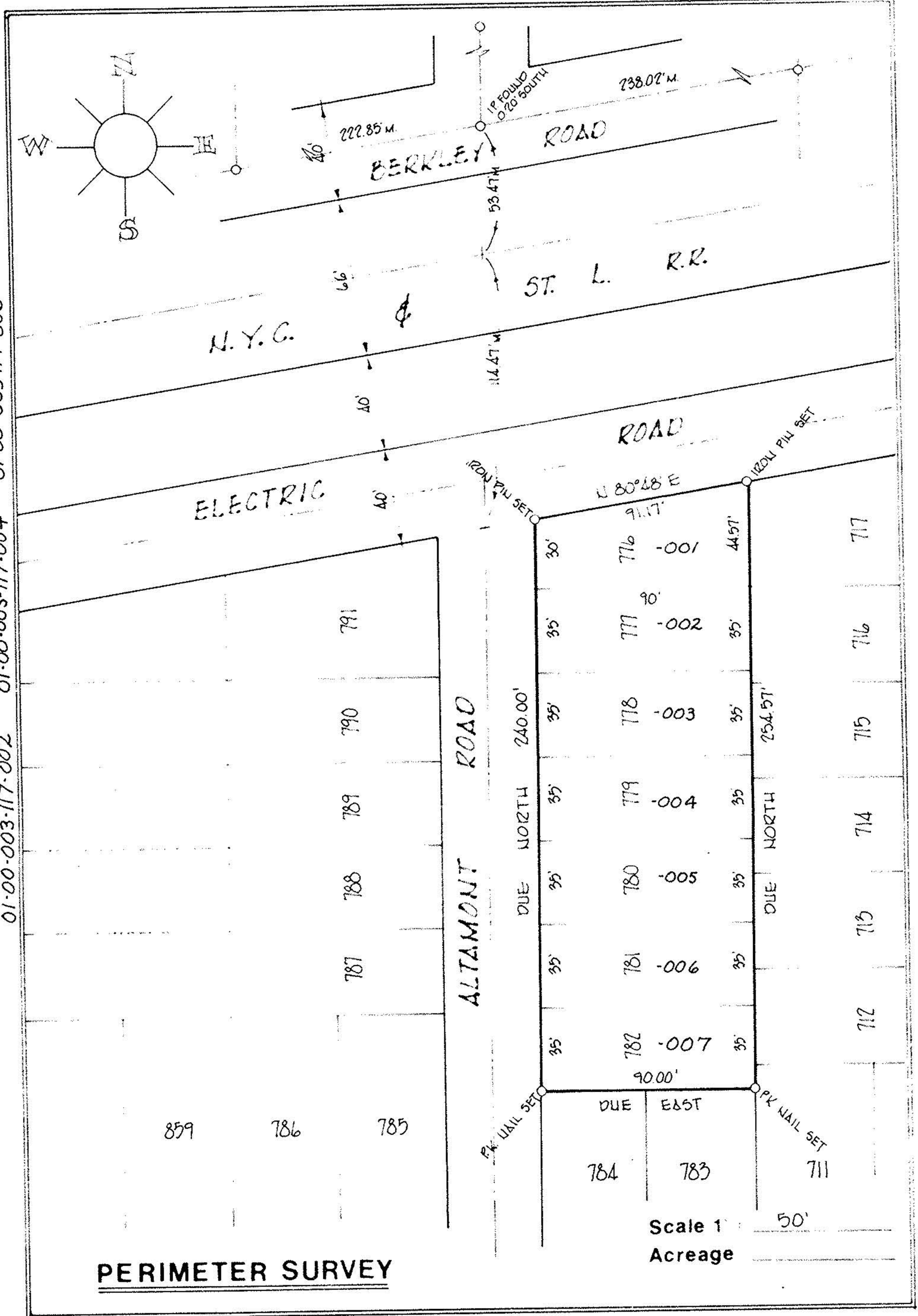


01-00-003-117-001 01-00-003-117-002 01-00-003-117-003 01-00-003-117-004 01-00-003-117-005 01-00-003-117-006 01-00-003-117-007 01-00-003-117-008 01-00-003-117-009 01-00-003-117-010 01-00-003-117-011 01-00-003-117-012 01-00-003-117-013 01-00-003-117-014 01-00-003-117-015 01-00-003-117-016 01-00-003-117-017 01-00-003-117-018 01-00-003-117-019 01-00-003-117-020 01-00-003-117-021 01-00-003-117-022 01-00-003-117-023 01-00-003-117-024 01-00-003-117-025 01-00-003-117-026 01-00-003-117-027 01-00-003-117-028 01-00-003-117-029 01-00-003-117-030 01-00-003-117-031 01-00-003-117-032 01-00-003-117-033 01-00-003-117-034 01-00-003-117-035 01-00-003-117-036 01-00-003-117-037 01-00-003-117-038 01-00-003-117-039 01-00-003-117-040 01-00-003-117-041 01-00-003-117-042 01-00-003-117-043 01-00-003-117-044 01-00-003-117-045 01-00-003-117-046 01-00-003-117-047 01-00-003-117-048 01-00-003-117-049 01-00-003-117-050



SUBLOT 776, 777, 778, 779, 780, 781, 782 OF
 VERMILION-ON-THE-LAKE SUB. NO 1
 Plat Vol 10 Page 18
 Part of O.L. 3 Section
 Tract BROWNHILL TWP
 City of VERMILION
LORDAN Co., Ohio

Michael G. Hura & Associates
 4560 Liberty Ave. Vermilion, Ohio

drawn p.a.r.
 date 7-2-80
 scale 1" = 50'
 field book

PERMANENT
 PARCEL NUMBER
 01-00-003-117-
 001 THRU 007