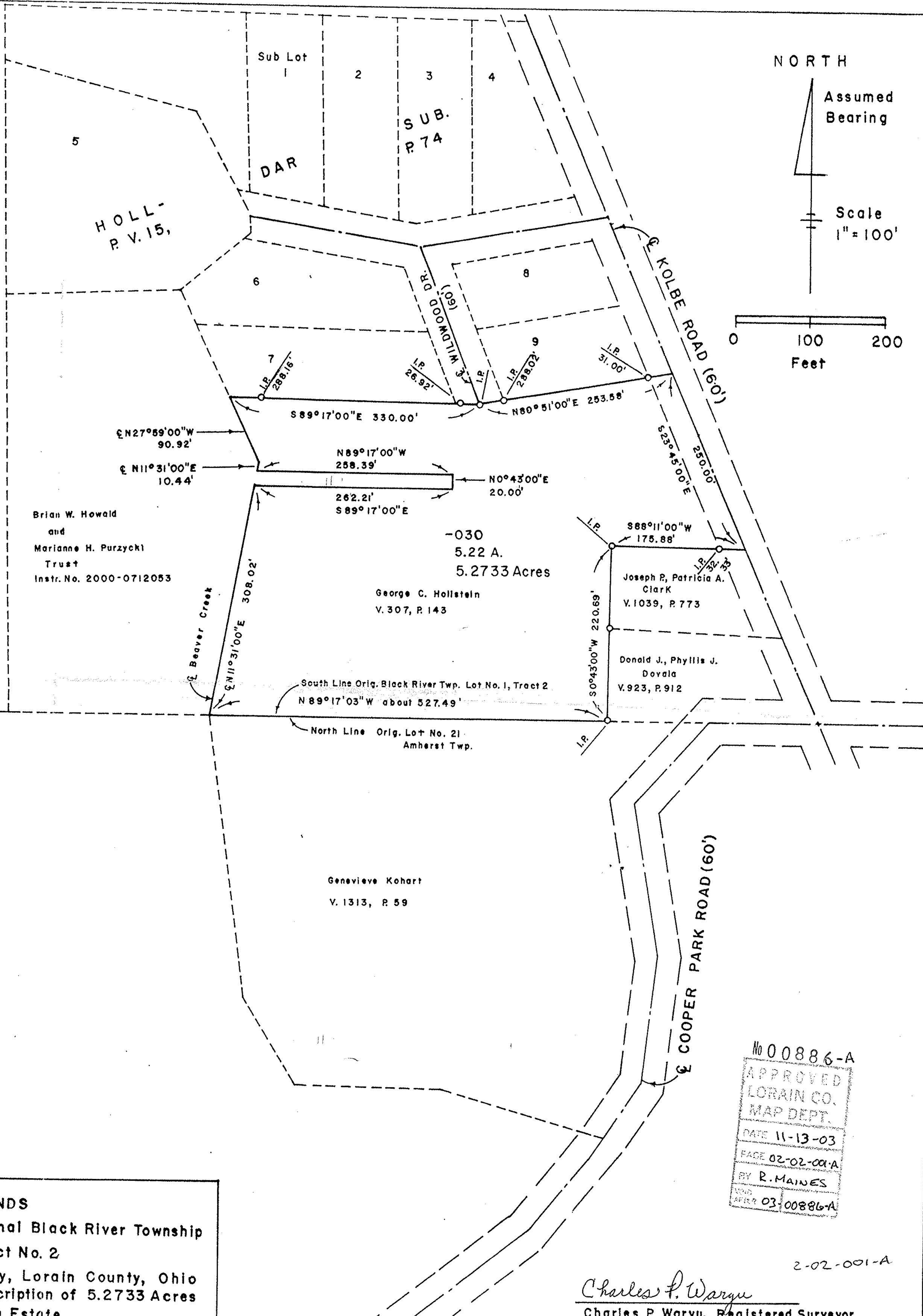
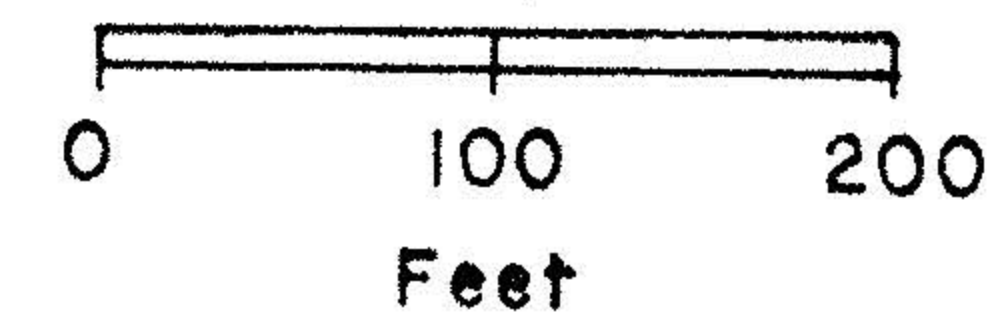


NORTH
Assumed
Bearing

Scale
1" = 100'



HOLL-
P.V. 15,

Sub Lot
1 2 3 4
SUB.
P. 74

DAR

KOLBE ROAD (60')

COOPER PARK ROAD (60')

\angle N27°59'00"W 90.92'
 \angle N11°31'00"E 10.44'
N89°17'00"W 258.39'
N0°43'00"E 20.00'
S89°17'00"E 330.00'
N80°51'00"E 253.58'
262.21'
S89°17'00"E

Brian W. Howald
and
Marianne H. Purzycki
Trust
Instr. No. 2000-0712053

-030
5.22 A.
5.2733 Acres

George C. Hollstein
V. 307, P. 143

Joseph P. Patricia A.
Clark
V. 1039, P. 773

Donald J., Phyllis J.
Doyala
V. 923, P. 912

South Line Orig. Black River Twp. Lot No. 1, Tract 2
N 89°17'03" W about 527.49'

North Line Orig. Lot No. 21
Amherst Twp.

Genevieve Kohart
V. 1313, P. 59

-004
14.78 A.

Thomas E., Lynne Ann
Hollstein
V. 1243, P. 711

MAP OF LANDS
Part of Original Black River Township
Lot No. 1, Tract No. 2
Amherst City, Lorain County, Ohio
Made for Description of 5.2733 Acres
For Hollstein Estate
February, 2001

No 00886-A
APPROVED
LORAIN CO.
MAP DEPT.
DATE 11-13-03
PAGE 02-02-001-A
BY R. MAINES
YOUR
OFFICE 03-00886-A

Charles P. Waryu
Charles P. Waryu, Registered Surveyor
No. 5029

2-02-001-A