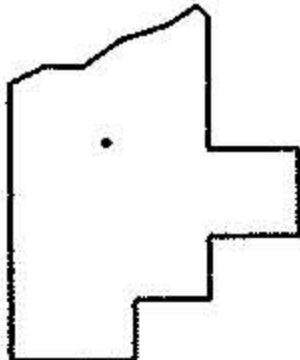
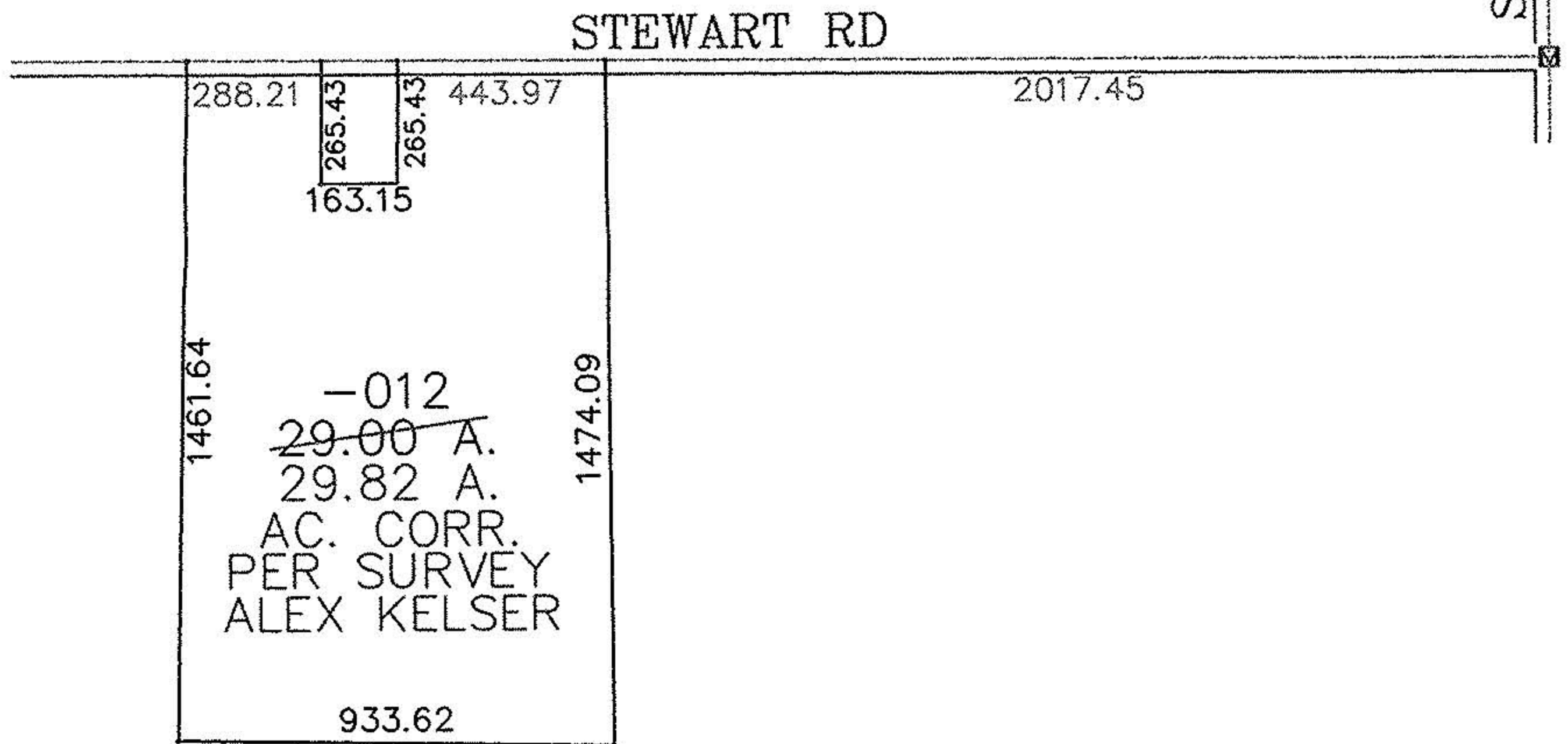
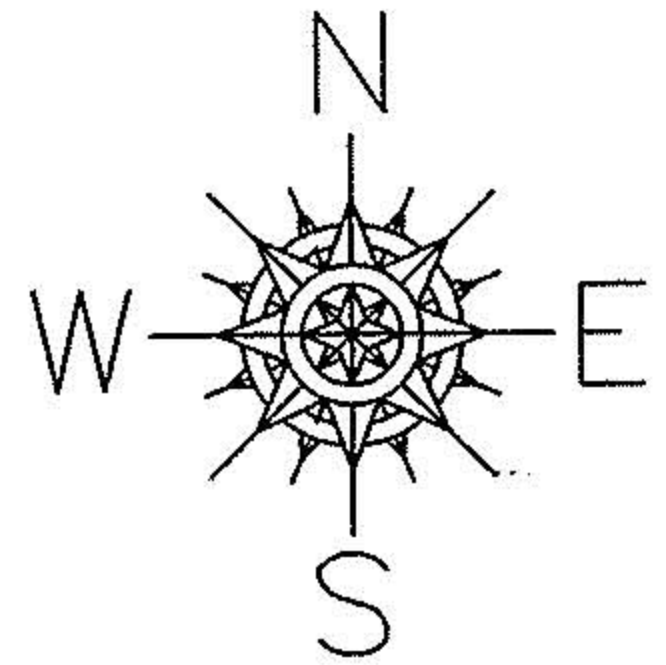


PARENT PARCEL: 20-03-002-000-012

CHILD PARCEL: SAME

STARTING POINT: INT CL STEWART RD AND SR 511

NO. 00883-A



SPLITS/DEEDS PROCESSED

LORAIN COUNTY TAX MAP DEPARTMENT  
226 MIDDLE AVE. ELYRIA, OHIO

SURVEYED BY: ALEX KELSER  
 CLOSURE: 0:00  
 MAP PAGE(S): 20-G  
 APPROVED BY: DRH DATE: 7/21/2003  
 SCALE: 1" = 500 PRIOR INSTRUMENT: DV 516/403