

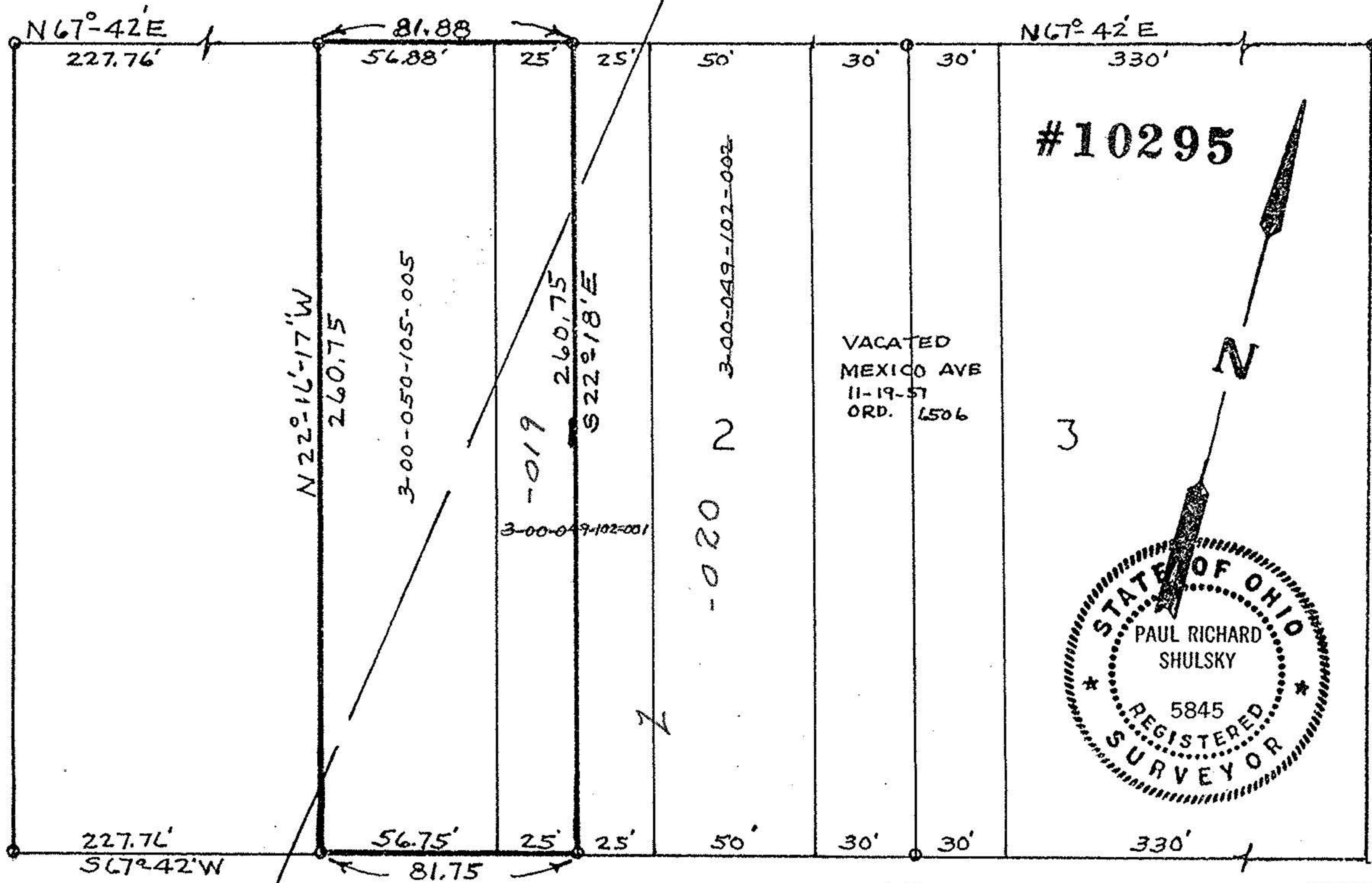
3-00-050

3-00-050-105-005-49
306, 79
50

EAST ERIE AVE 66'

MICHIGAN AVE 60'

MISSISSIPPI AVE 60'



#10295

3



APPROVED BY THE LORAIN CITY PLANNING COMMISSION... NO PLAT REQUIRED

Jerry Rodgers
SECRETARY LORAIN CITY PLANNING COMMISSION

Lowell A. Kneisel, Engr. Dept.
APPROVED

Original Lot 50 & 49
Sheffield Township, Lorain County
2150 East Erie Avenue
Lorain, Ohio
pp03-00-050-105-005 & part of Sub-lot 1
Faragher's Addition
Scale 1"=50' Nov 1976