

9

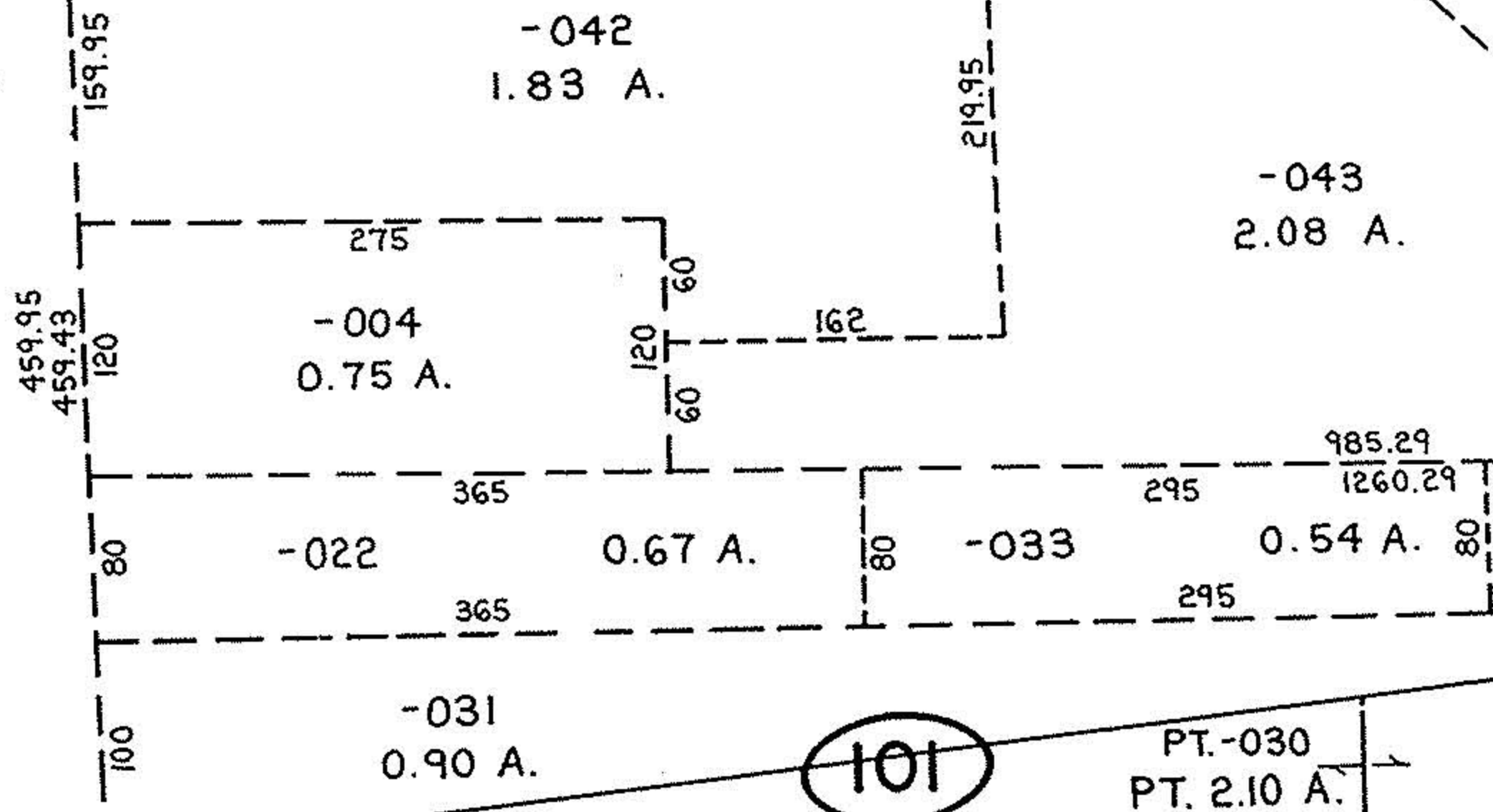
101

# 02197-A -054  
~~15.24 A.~~  
15.36 A.

ACREAGE  
CORRECTION  
PER EDWARD DUDLEY  
NORTH COAST ENG & SURVY  
SEPT. 2000  
PRIOR INST REF OR 1064/746

SEE 6-25  
LAKE

PT. -041  
PT. 11.40 A.



# 00447-A

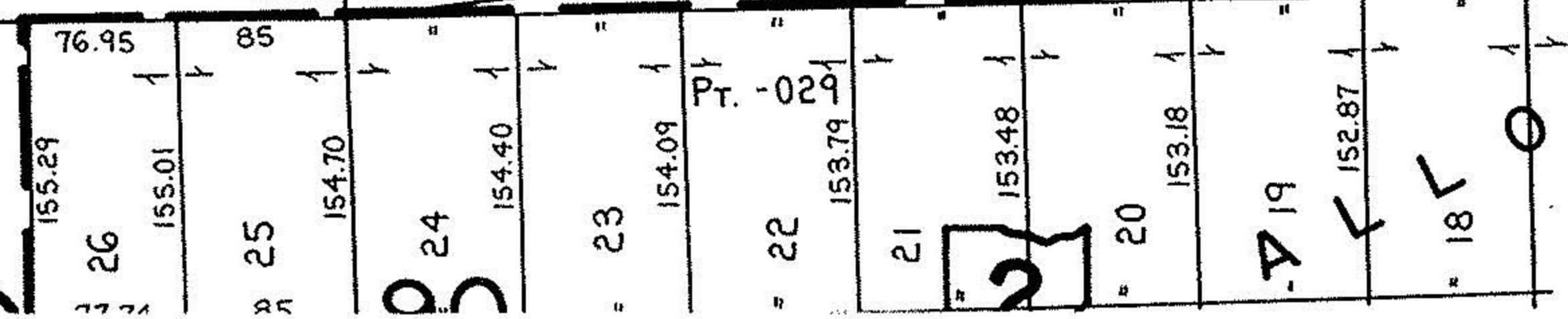
APPROVED
LORAIN CO.
MAP DEPT.
DATE 10/26/00
PAGE 6-24
BY T-McMain
06447-A

10 of 2

10

101

101



661.54

PT.-030  
PT. 2.10 A.