

SHERIFF STREET 50'

06-24-88 Co-108

#18222

6-61

(Assumed)
due EAST
83.34'

89°56'
Obs.

41.67'

41.67'

41.67'

41.67'

47

46

45

44

62

69

68

63

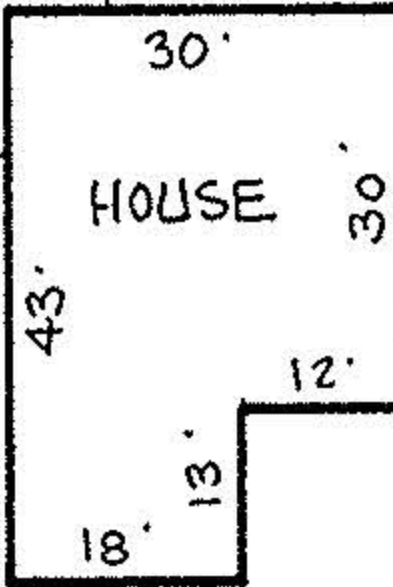
120'

N-0°04'-E
120.00'

95.00'

0.182 AC.

120'



95.00'

S-0°04'-W
120.00'

45'

APPLE STREET

due WEST
83.34'

41.67'

41.67'

41.67'

41.67'

N-0°04'-E
40.00'

I.P.Fd.

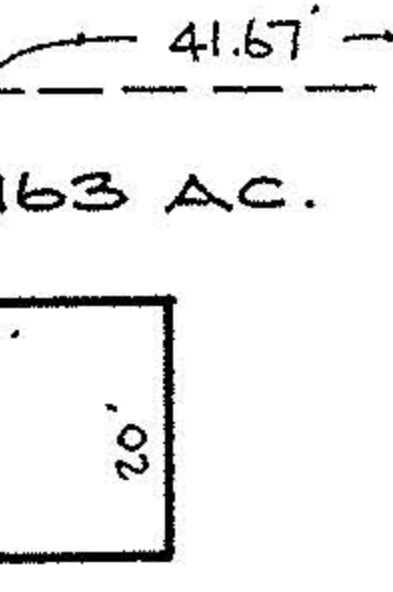
I.P.Fd.

25.00'

24'

41.67'

25'



65.00'

S-0°04'-W
40.00'

I.P.Fd.

125.01'
due WEST

#18222

APPROVED LORAIN CO. MAP DEPT.	
DATE 11-21-88	
PAGE 6-61	
BY T. McMain	
VOID AFTER	18222

BOUNDARY SURVEY
SUBLOTS 44, 45, & 69 IN
MAPLE RIDGE ALLOTMENT
P.V. 6 PP. 43

CITY OF ELYRIA
COUNTY OF LORAIN
STATE OF OHIO

SCALE: 1" = 30' NOV. 1988

PREPARED BY
KS ASSOCIATES INC.
ENGINEERS SURVEYORS

David L. Elwell
REG. SURV. NO. 6333

