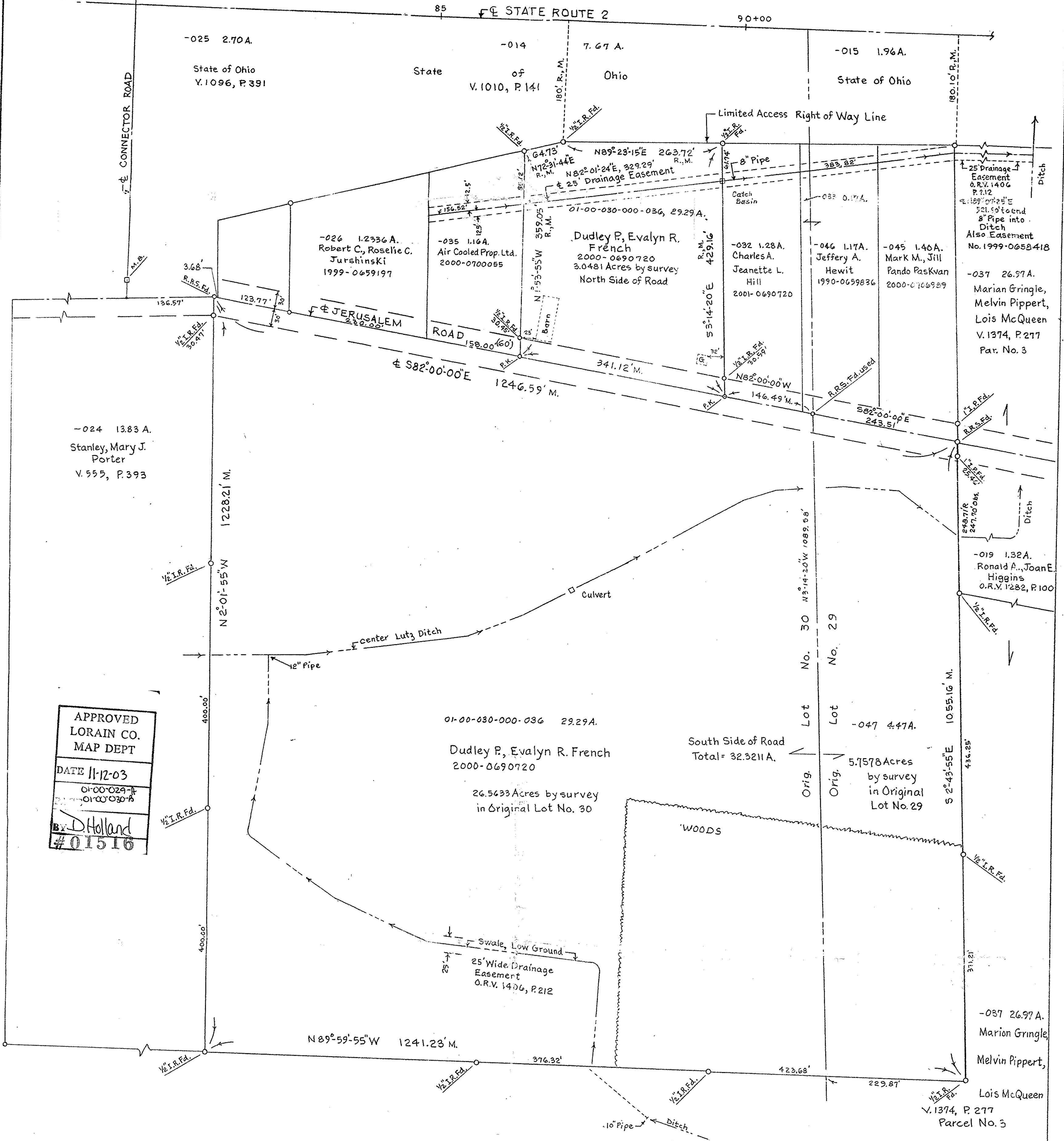
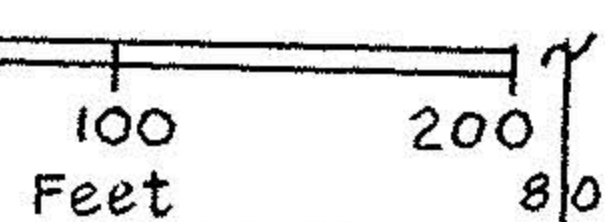


NORTH
Assumed
Bearing

SCALE
1"=100'



APPROVED
LORAIN CO.
MAP DEPT
DATE 11-12-03
01-00-029-
01-00-030-
By D. Holland
#01516

MAP OF SURVEY MADE, 3.0481 AC. AND 32.3211 AC.,
PART OF ORIG. LOT NO. 29, 30,
BROWNHELM TWP,
VERMILION, LORAIN COUNTY, OHIO
For Dudley P. French
August 2003

Charles P. Waryu August 19, 2003
CHARLES P. WARYU, REGISTERED SURVEYOR
NO. 5029