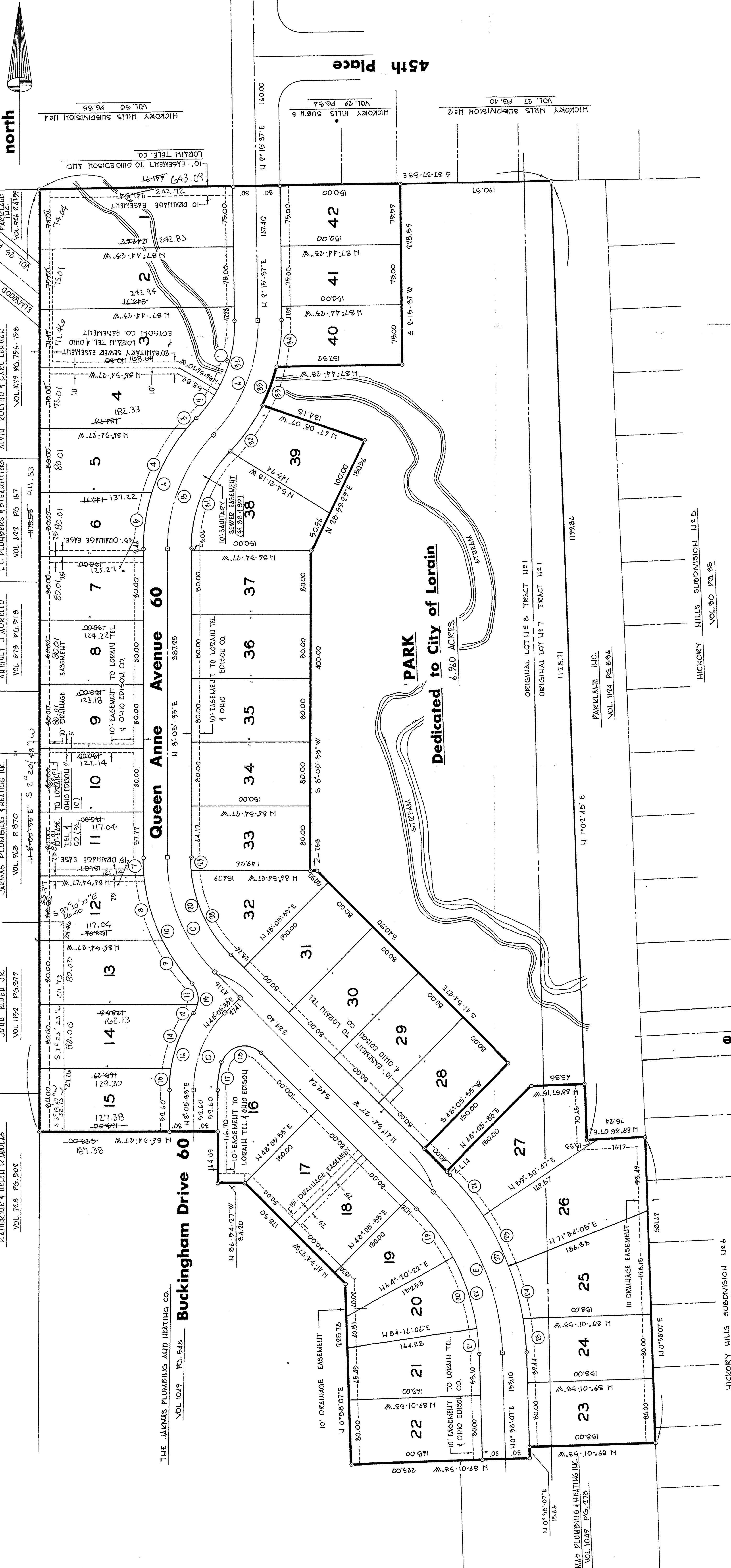


# 053289

# 053289



NO.	RADIUS	DELTA	CURVE	SCHEDULE	ARC	CHORD	CHD. BRG.
1	159.41	50.4815	46.27	91.08	89.99	117.59	48.15
2	181.41	14.71	21.10	41.95	41.87	140.09	45.15
3	235.55	4.02	6.57	16.47	16.46	145.14	74.15
4	295.55	2.02	3.28	8.23	8.23	145.14	74.15
5	355.55	1.01	1.64	4.12	4.12	145.14	74.15
6	415.55	0.51	0.82	2.06	2.06	145.14	74.15
7	475.55	0.25	0.41	1.03	1.03	145.14	74.15
8	535.55	0.13	0.21	0.51	0.51	145.14	74.15
9	595.55	0.06	0.11	0.25	0.25	145.14	74.15
10	655.55	0.03	0.05	0.13	0.13	145.14	74.15
11	715.55	0.01	0.03	0.06	0.06	145.14	74.15
12	775.55	0.01	0.01	0.03	0.03	145.14	74.15
13	835.55	0.00	0.01	0.01	0.01	145.14	74.15
14	895.55	0.00	0.00	0.00	0.00	145.14	74.15
15	955.55	0.00	0.00	0.00	0.00	145.14	74.15
16	1015.55	0.00	0.00	0.00	0.00	145.14	74.15

NO.	RADIUS	DELTA	TAI	ARC	CHORD	CHD. BRG.
17	1075.00	19.14	27.17	95.24	95.09	117.47
18	1135.00	11.54	16.51	60.61	60.31	117.47
19	1195.00	6.28	8.76	35.54	35.31	117.47
20	1255.00	3.54	4.74	19.91	19.74	117.47
21	1315.00	1.92	2.61	11.11	11.02	117.47
22	1375.00	1.01	1.40	6.05	6.00	117.47
23	1435.00	0.51	0.74	3.31	3.29	117.47
24	1495.00	0.25	0.41	1.84	1.83	117.47
25	1555.00	0.13	0.21	1.03	1.02	117.47
26	1615.00	0.06	0.11	0.51	0.51	117.47
27	1675.00	0.03	0.05	0.25	0.25	117.47
28	1735.00	0.01	0.03	0.13	0.13	117.47
29	1795.00	0.01	0.01	0.06	0.06	117.47
30	1855.00	0.00	0.03	0.03	0.03	117.47
31	1915.00	0.00	0.01	0.01	0.01	117.47
32	1975.00	0.00	0.00	0.00	0.00	117.47
33	2035.00	0.00	0.00	0.00	0.00	117.47
34	2095.00	0.00	0.00	0.00	0.00	117.47
35	2155.00	0.00	0.00	0.00	0.00	117.47
36	2215.00	0.00	0.00	0.00	0.00	117.47

# Nottingham Woods

**Avenue**

**Drive**

**Washington**

**Peg**

**PARK**  
Dedicated to City of Lorain  
6.9% ACRES

TRANSFERRED  
IN COMPLIANCE WITH SEC. 317.02  
OF THE REV. CODE  
JULIAN A. BUCH  
LORAIN COUNTY AUDITOR

36/7  
REF. OR 471/347  
SHEET 2 OF 2