

BOUNDARY & LOT SPLIT

CITY OF VERMILION ~ LORAIN COUNTY ~ STATE OF OHIO
 PART OF ORIGINAL BROWNHELM TOWNSHIP LOT NO. 13
 JANUARY 2004

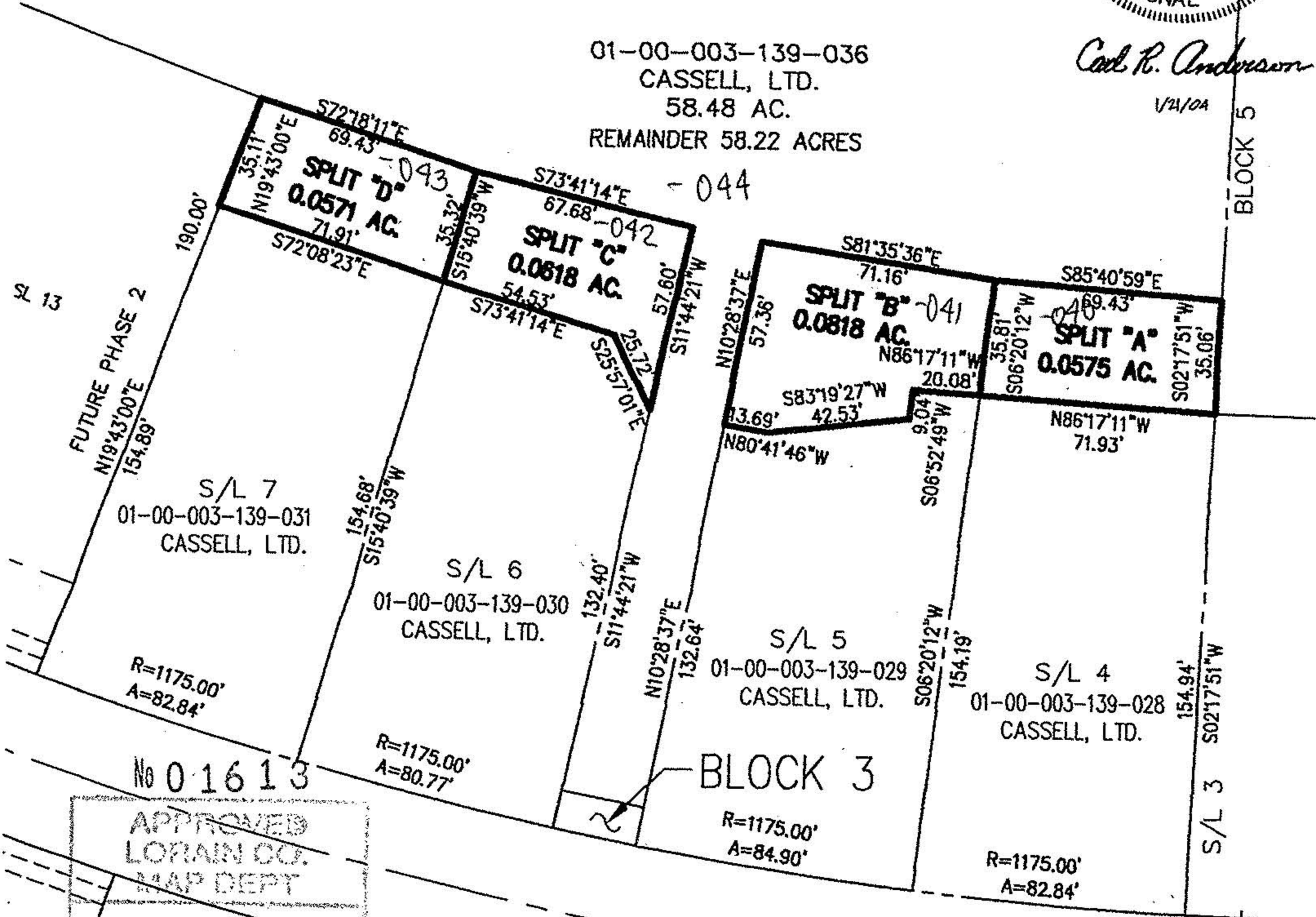


Carl R. Anderson

V21/0A

01-00-003-139-036
 CASSELL, LTD.
 58.48 AC.
 REMAINDER 58.22 ACRES

BLOCK 5



No 01613

APPROVED
 LORAIN CO.
 MAP DEPT

DATE 3-19-04

PAGE 1-00-003-C

J Hatfield
 S/L 8
 #04-01613

NATURES PRESERVE SUBDIVISION NO. 1
 PLAT VOL. 67 / PG. 41

HAYWOOD
 Civil Engineering & Land Surveying
 "Committed to Service and Quality"

PT.
 BLOCK 1

PT.
 BLOCK 1



SCALE: 1 in. = 50 ft.

630 Cleveland Street Office: (440) 365-9831
 Elyria, Ohio 44035 Fax: (440) 365-3426
 www.haywoodcivilengineering.com