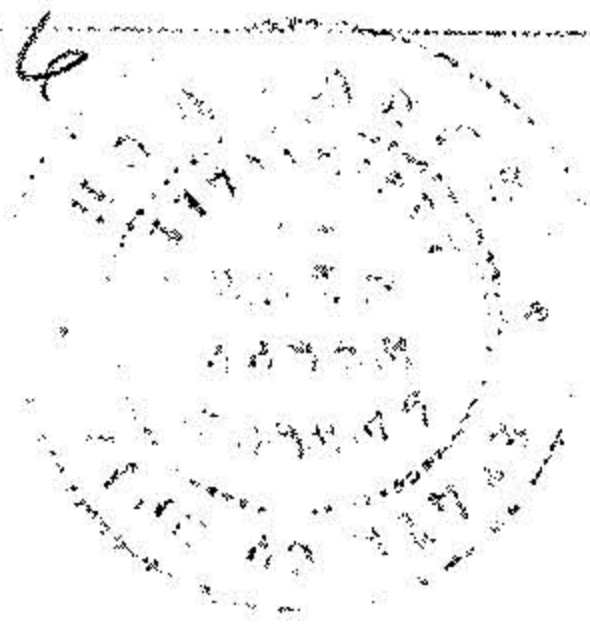


1-K

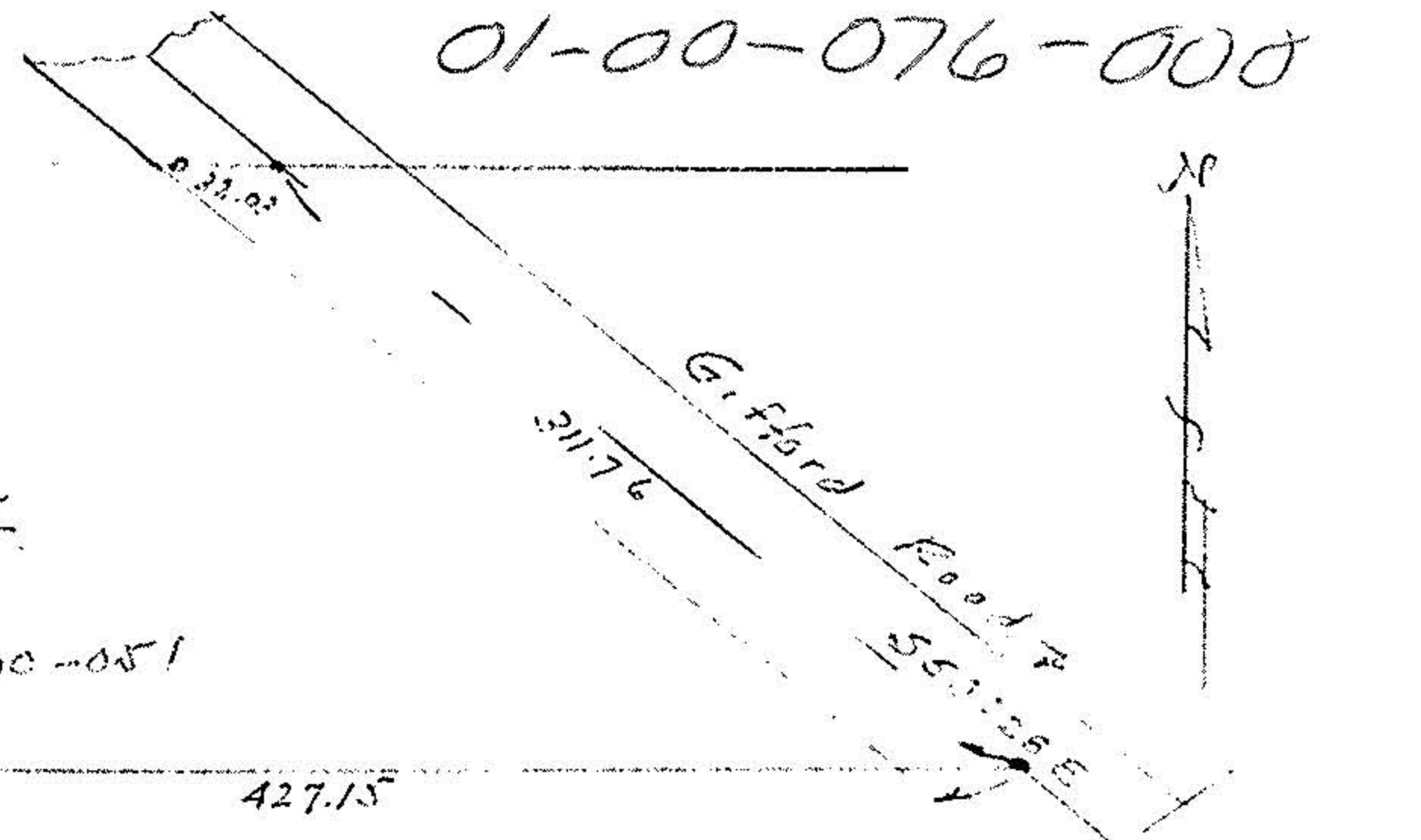
16401

01-00-076-000

0.7-76



North Line S.L. 76
N 89° 10' 30" W
877.82



ALBERT J. & JANET L. WANZEK

VOL 1159-924

01-00-076-000-051

909.92
589° 10' 30" E 427.15

ELIZ WANZEK

01-00-076-000-055

4.14 AC Duplicate

CALC. 4.04 ± AC.

N 89° 10' 30" W

764.52

John & Jane S. WATT

Vol 1170-706

01-00-076-000-053

N 46° 27' 30" W
290.39
LINDA WEST
VOL 1056-254
01-00-076-000-027

APPROX
M. Line
East Line
239

APPROX
Vol 856-492
225
East Line

Map of Part of O.L. 76
Bromhelm Twp., Lorain Co., Ohio
Scale 1" = 100'
Sept. 24, 1985
From records by Arnold F. Koeppe
Reg. Surveyor No. 4306
1976

#16401

APPROVED

LORAIN CO.

MAP DEPT.

DATE 10.1.85

PAGE 1-K

BY T. McManis

VOID
AFTER