

rain Co. Ohio

4306 987.92 Deed

9299

P-1

5-1-00-1

870-000-LL0-00-10

Line Parallel To Perrygo Road

Deed 945±

513.52±

1.90 AC Vol 1091-137

51:09 E

558.74

Jay M. & Jayne D. Murray
Vol. 1056-206
7.29 AC ±

DEC 12 1975

DEC 31 1975

JS

Harold Emmerich Vol 319-501

South

170

North

127.46
N70:14'W

034

839.22
N70:14'W
211.76
1.45 AC ±

585°05'30"E

246.77 AC

028
1.34 AC ±

190.2
146.53
Creek
101.10
242.7 ± 51:09 E

200.85 S 88° 19' E 50
325.85
125

Portman Road

250.71
N1:09 W
213.36

N1:09 W

360.80

Edwin A. Carrwell & Dawn M. Carrwell
Vol 985-476

N1:09 W
51:09 E

373.24
0.27 AC

55°10' W 372.12

95.51
587:15' E
195'

8:01 538' W

149.47

30

30

30

30

30

30

30

30

30

30

30

30

30

30

30

30

30

30

30

30

30

30

30

30

30

30

30

30

30

30

30

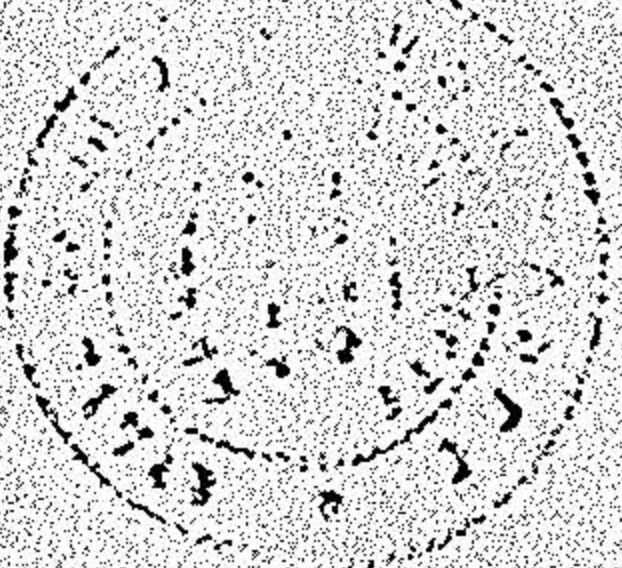
30

30

30

30

30



028
034

000-077-00-10