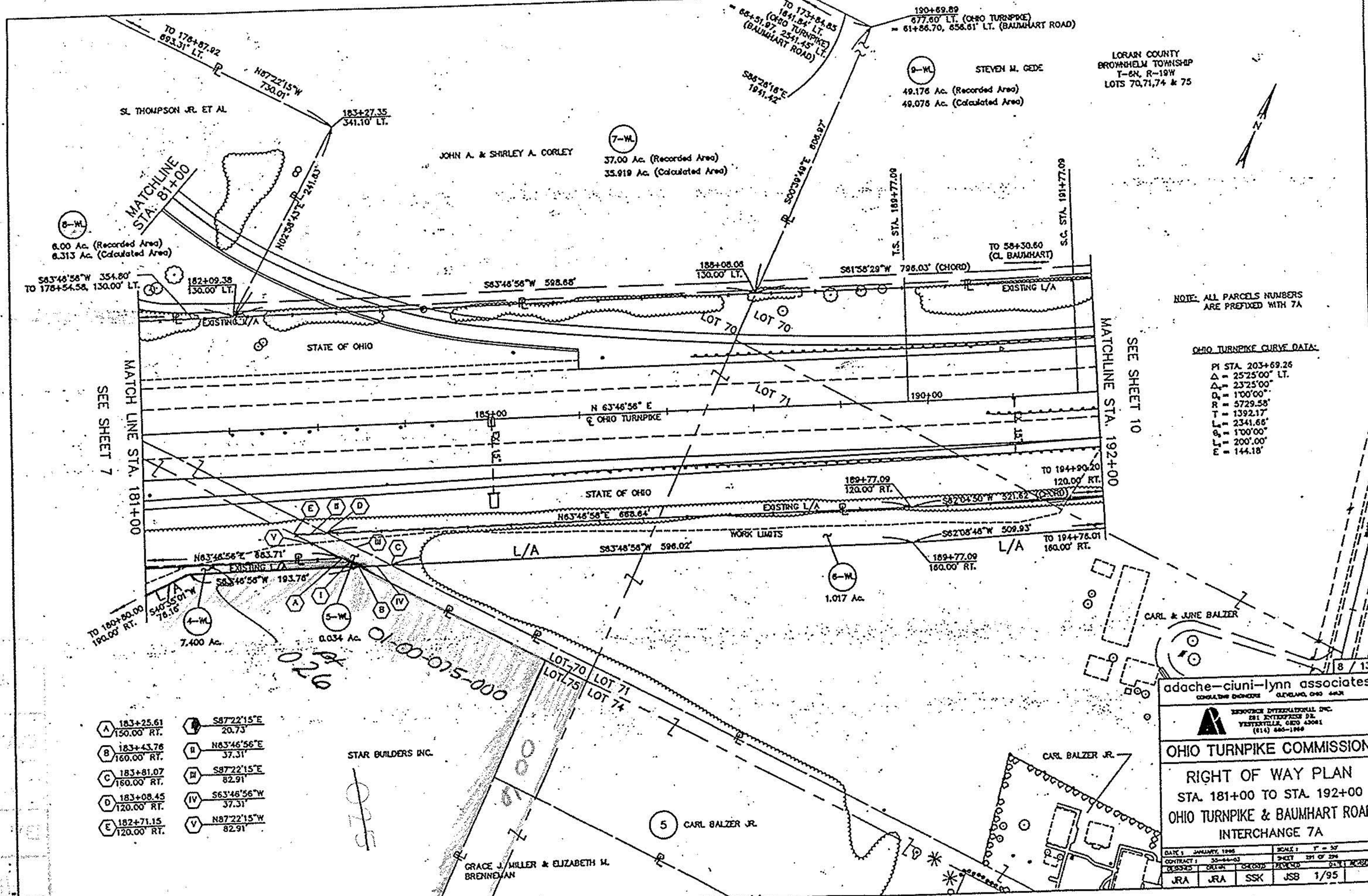


P.P.N 01-00-075-000-028



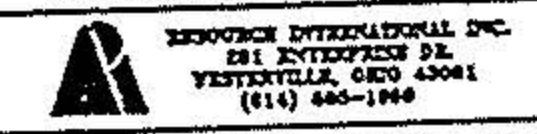
NOTE: ALL PARCELS NUMBERS ARE PREFIXED WITH 7A

OHIO TURNPIKE CURVE DATA

PI STA	203+69.26
Δ	25°25'00"
Δ	23°25'00"
D	100'00"
R	5729.58'
T	1392.17'
L	2341.66'
E	100'00"
F	200'00"
E	144.18'

A	183+25.61 150.00' RT.	S 87°22'15" E 20.73'
B	183+43.76 160.00' RT.	N 63°46'56" E 37.31'
C	183+81.07 160.00' RT.	S 87°22'15" E 82.91'
D	183+08.45 120.00' RT.	S 63°46'56" W 37.31'
E	182+71.15 120.00' RT.	N 87°22'15" W 82.91'

adache-ciuni-lynn associates
CONSULTING ENGINEERS CLEVELAND, OHIO 44114



OHIO TURNPIKE COMMISSION

RIGHT OF WAY PLAN
STA. 181+00 TO STA. 192+00
OHIO TURNPIKE & BAUMHART ROAD
INTERCHANGE 7A

DATE	JANUARY 1995	SCALE	1" = 50'
CONTRACT	30-64-03	SHEET	21 OF 254
DESIGNED	JRA	CHECKED	SSK
DRAWN	JRA	APPROVED	JSB
DATE	1/95		