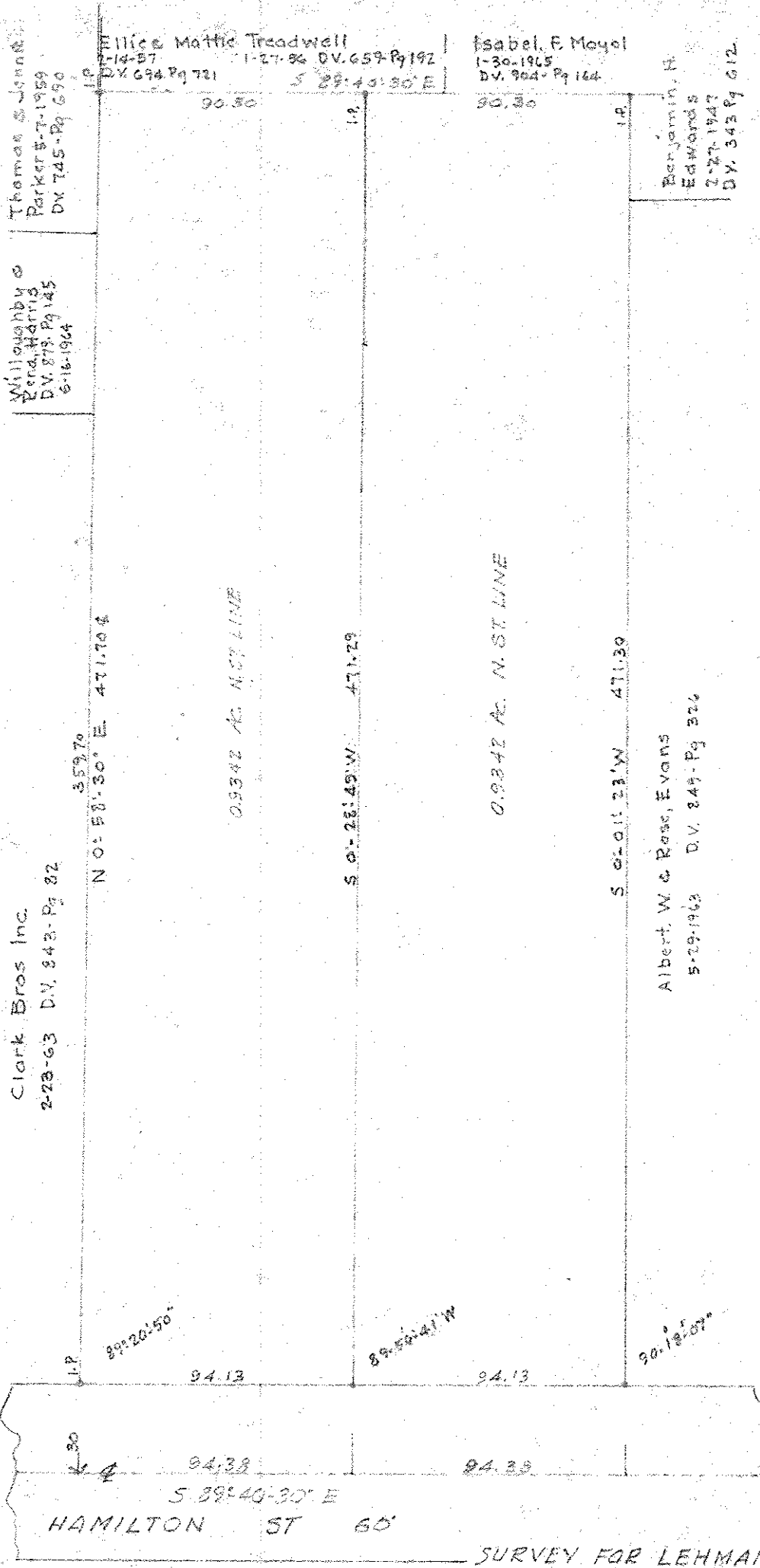


09-80-094-103-010,011
SCAN # 3082, 9-00-094-B

SCAN # 3082A

LINCOLN ST



Thomas S. Jennett
Parker 5-7-1959
DX 745-Pg 690

Willoughby &
Pena, Harris
D.V. 878-Pg 145
5-16-1964

Clark Bros Inc.
2-23-63 D.V. 843-Pg 82

Ellice & Mattie Treadwell
1-14-57
D.V. 694-Pg 721
1-27-96 D.V. 659-Pg 192
S 22° 43' 30\"/> E

Isabel, E. Moyal
1-30-1965
D.V. 904-Pg 164

Benjamin, H.
Edwards
2-27-1947
D.V. 343-Pg 612

N 0° 58' 30\"/> E 471.70

0.9342 Ac. N. ST LINE

S 0° 28' 49\"/> W 471.29

0.9342 Ac. N. ST LINE

S 0° 01' 23\"/> W 471.39

Albert, W. & Ross, Evans
5-29-1963 D.V. 849-Pg 324

196.02

HAMILTON ST 60'

SURVEY FOR LEHMAN-JOHNSON CO
PT O.L.4 FOLLETT'S 2ND ADDN
P.V. 3- PG.9 LORAIN CO. REC. PLATS
CITY OF OBERLIN- LORAIN CO. OHIO
SCALE 1" = 50' 8-16-67
LAUNDON-HUFFMAN-SIMON-SURVEYORS