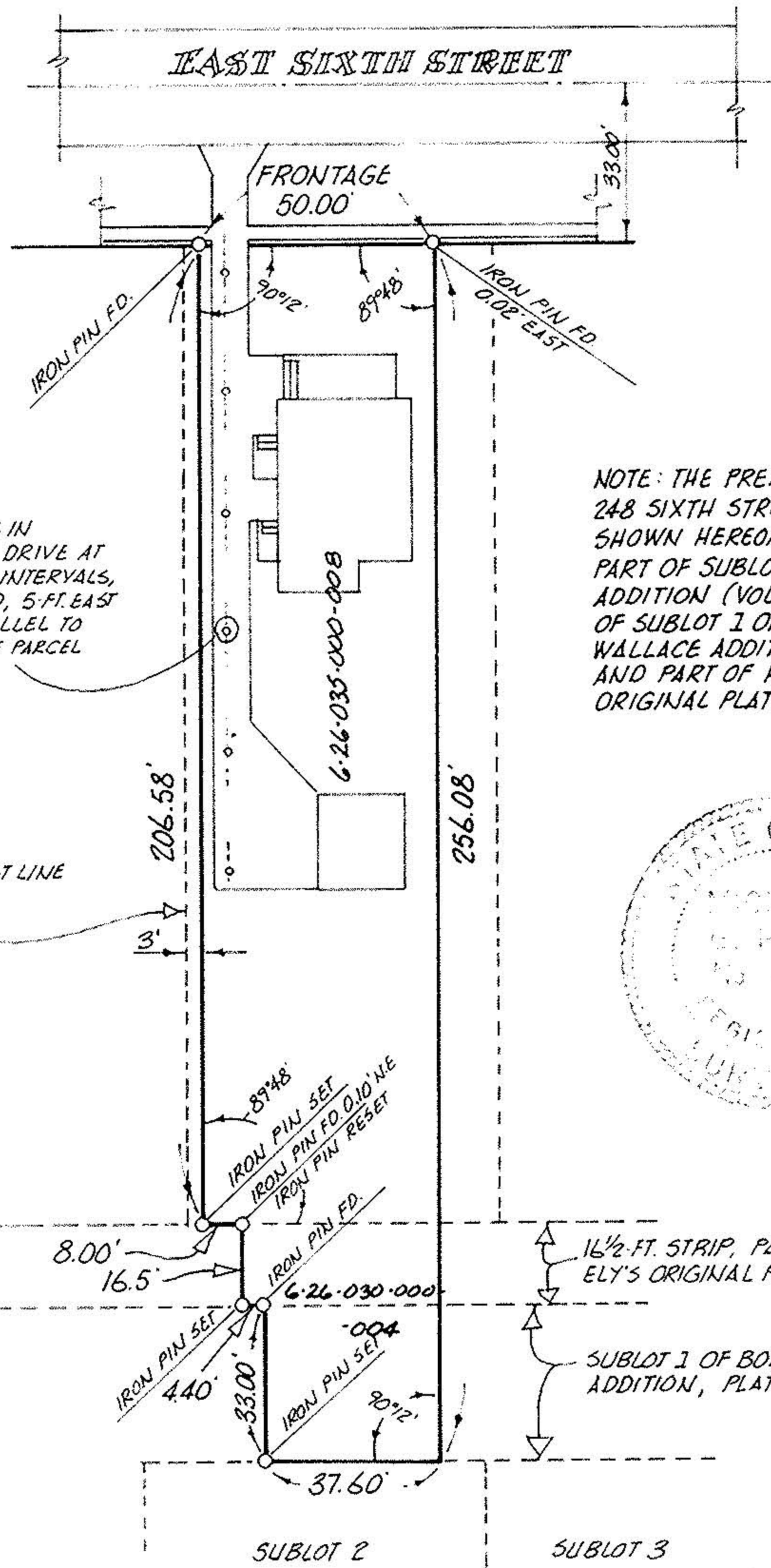
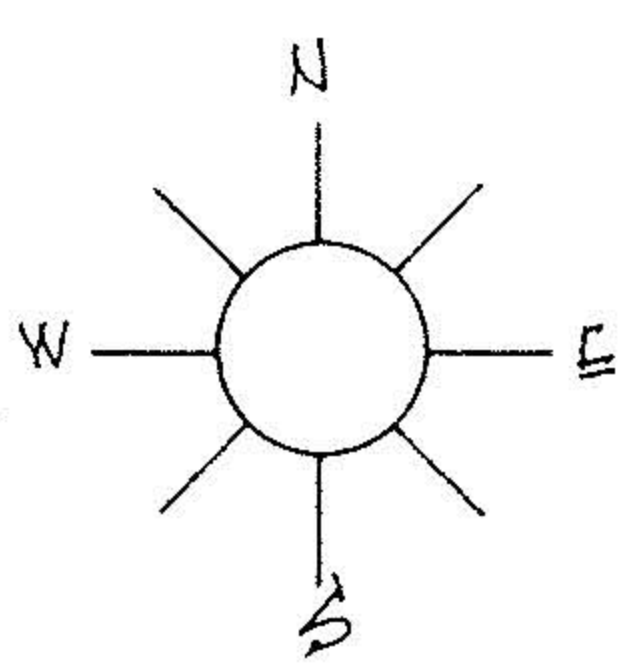


6-26-030-000-014
6-26-035-000-008



LINE OF NAILS IN BITUMINOUS DRIVE AT ABOUT 25-FT INTERVALS, PAINTED RED, 5-FT. EAST OF AND PARALLEL TO WEST LINE OF PARCEL

ORIGINAL WEST LINE OF SUBLOT 4

NOTE: THE PREMISES OF 248 SIXTH STREET, ELYRIA, OHIO, SHOWN HEREON, REPRESENTS PART OF SUBLOT 4 OF ROOD'S ADDITION (VOL. 1, PAGE 13), PART OF SUBLOT 1 OF THE BOWEN WALLACE ADDITION (VOL. 2, PG. 20) AND PART OF HEMAN ELY'S ORIGINAL PLAT (VOL. B, PG. 339)



16 1/2-FT. STRIP, PART OF HEMAN ELY'S ORIGINAL PLAT, VOL. B, PG. 339
SUBLOT 1 OF BOWEN WALLACE ADDITION, PLAT VOL. 2, PG. 20

PERIMETER SURVEY

Scale 1" = 40'
Acreage _____

SUBLOT 4 of ROOD'S ADDITION
AND OTHER PARCELS (SEE NOTE)
Plat Vol 1 Page 13
Part of O.L. Section
Tract ELYRIA TWP
City of ELYRIA
LORAIN Co., Ohio

Michael G. Hura & Associates
4560 Liberty Ave. Vermilion, Ohio
drawn MGH
date 06-28-79
scale 1" = 40'
field book

PERMANENT
PARCEL NUMBER
6-120-035-008