

⑧ 0.287 Acre

VOID

- ① 140.96 N 7°-25'-30"E
- ② 801.00' N 18°-31'-30"W
- ③ 1171.00' N 3°-28'-30"E
- ④ 1311.00' N 53°-28'-30"E
- ⑤ 751.00' N 30°-31'-30"W
- ⑥ 1341.00' N 49°-31'-30"W
- ⑦ 580.00' N 38°-31'-30"W
- ⑧ 951.35' S 57°-8'-12"E
- ⑨ 103.71' N 26°-08'-24"W

⑧ 0.287 Acre

- ① 140.96 N 7°-25'-30"E
- ② 801.00' N 18°-31'-30"W
- ③ 1171.00' N 3°-28'-30"E
- ④ 1311.00' N 53°-28'-30"E
- ⑤ 751.00' N 30°-31'-30"W
- ⑥ 1341.00' N 49°-31'-30"W
- ⑦ 580.00' N 38°-31'-30"W
- ⑧ 951.35' S 57°-8'-12"E
- ⑨ 103.71' N 26°-08'-24"W

21555

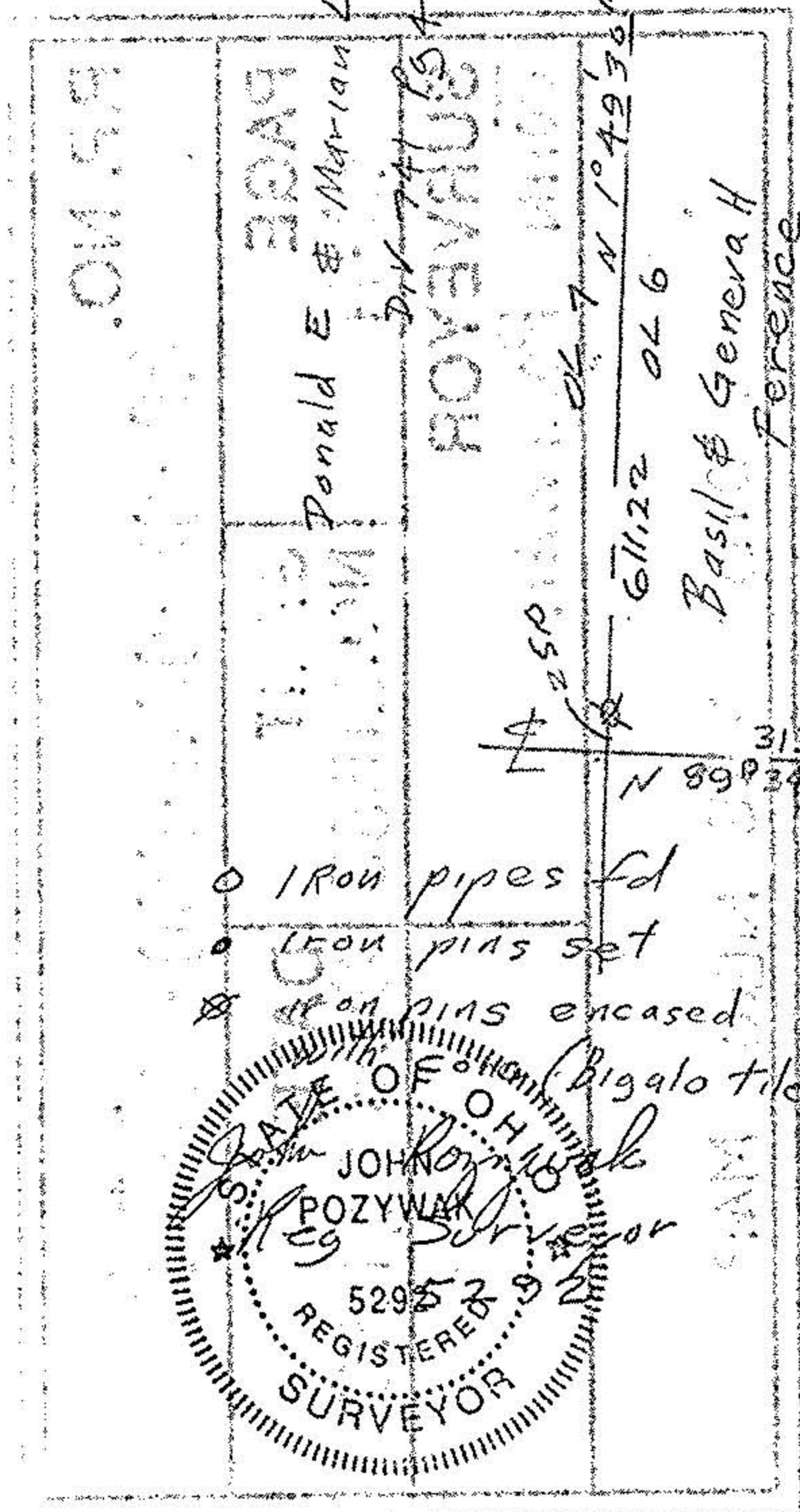
APPROVED
LORAIN CO.
MAP DEPT

DATE 12-4-95

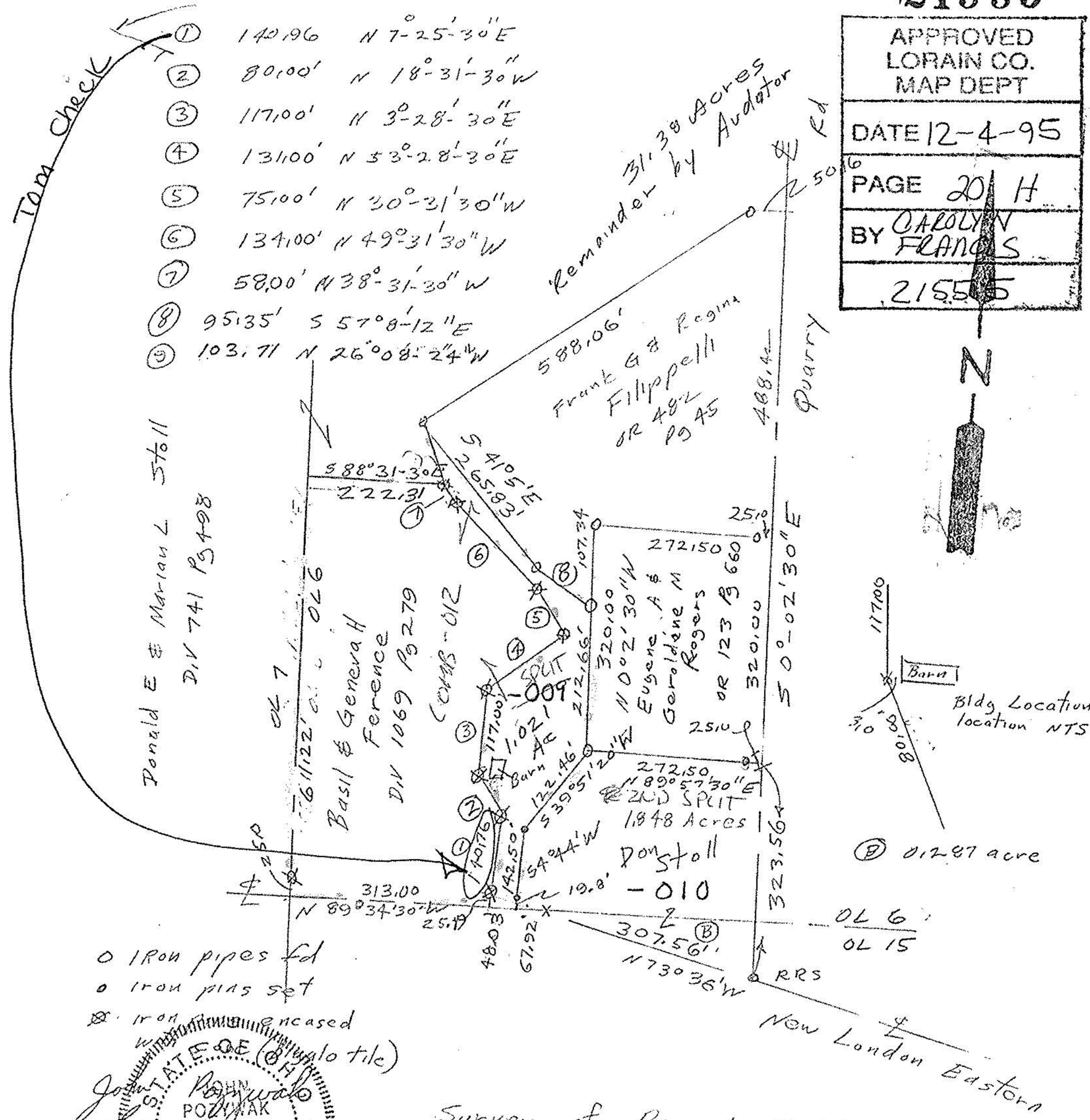
PAGE 20 H

BY CAROLYN
FRANCIS

21555



Survey of Parcel Splits
for Don Stoll
Original Lots 6 & 15 Tract 3
Rochester Township, Lorain County
Scale 1"=200' Aug 1995
Revised Sept 22, 95



Survey of Parcel Splits
for Don Stoll
Original Lots 6 & 15 Tract 3
Rochester Township, Lorain County
Scale 1"=200' Aug 1995
Revised Sept 22, 95