

# 12639

19-~~1~~-D

19-04-048-000  
-006  
-002

Ronald Farkas  
D. Vol. 1130 Pg. 777

-004

270.00'  
5.87°15'30"W. 300.00'

PARCEL No. 3 1.033 ACRES

-006  
1.03A

N. 87°15'30"E. 300.00'  
101.43' 168.57'

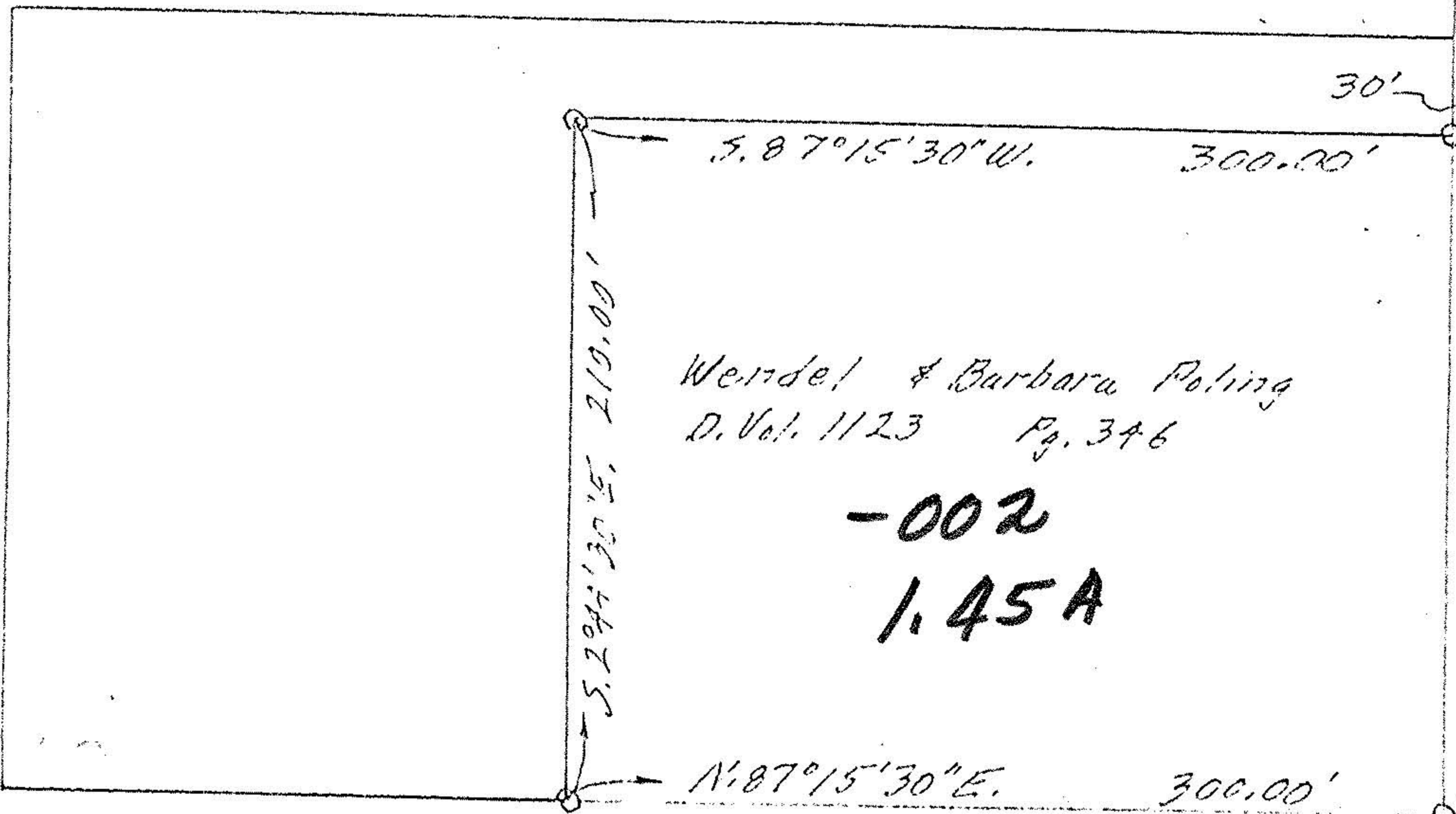
-007

130, 53A

PARAS SET

30'  
90°  
100.64'  
150.00'  
N. 2°44'30"W.

3753.79' Vermont Road,



Weindef & Barbara Poling  
D. Vol. 1123 Pg. 346

-002  
1.45A

O.L. 48

O.L. 49

42.00'

30.00'

N. 2°44'30"W. 210.00'  
44.04'

VERMONT RD,