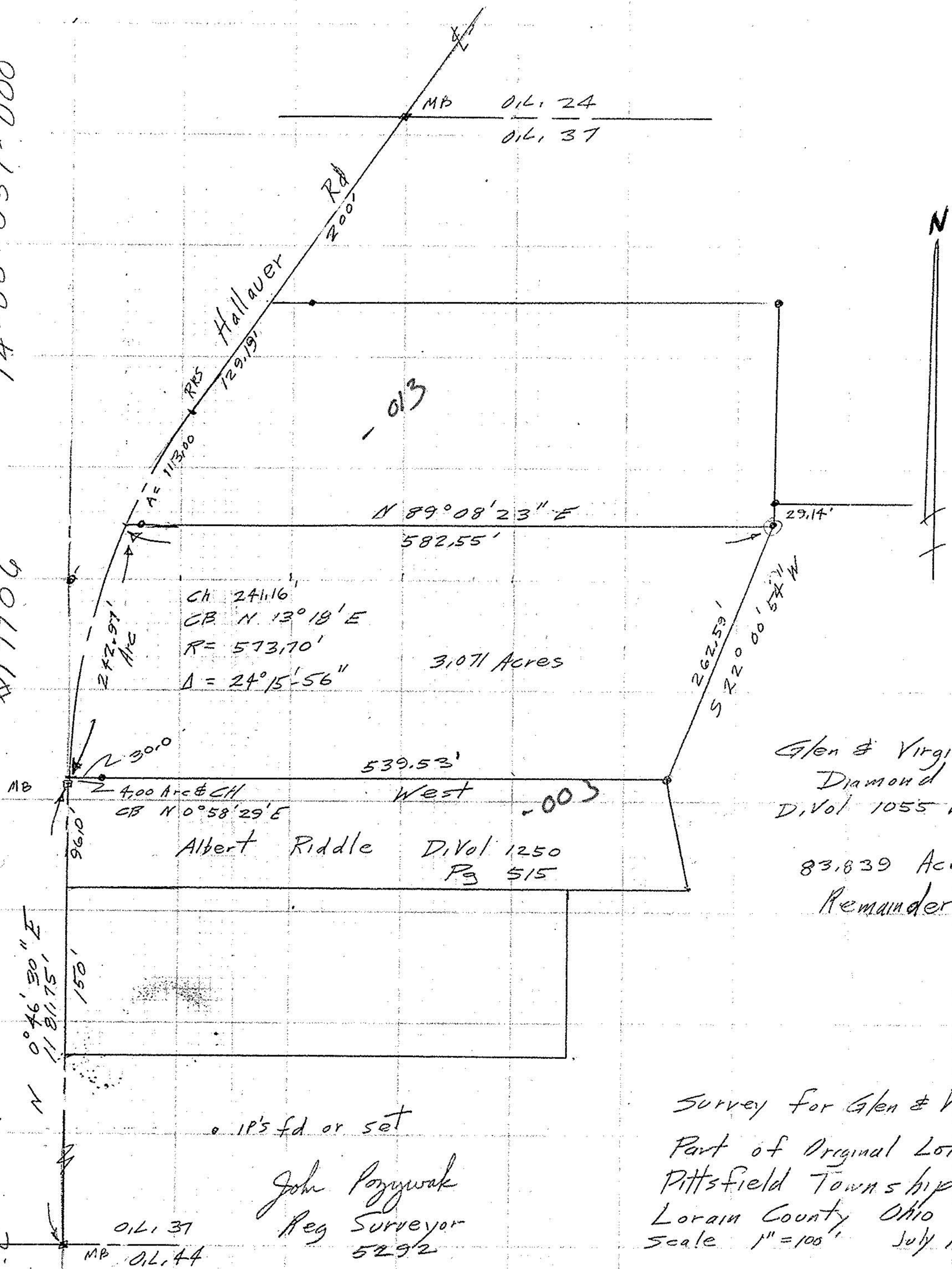
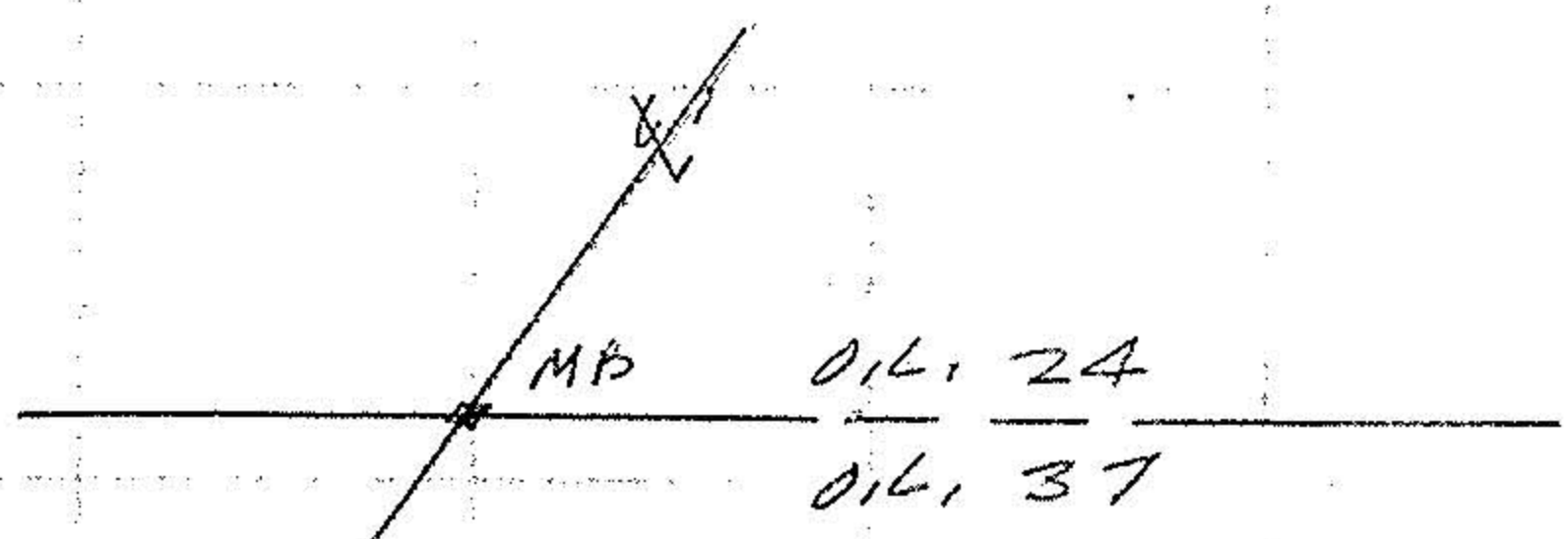


14-00-037-000

#17706

14-C



CH 241,16'  
 CB N 13°18' E  
 R = 573,70'  
 Δ = 24°15'56"

3,071 Acres

Albert Riddle D. Vol 1250  
 Pg 515

Glen & Virginia  
 Diamond  
 D. Vol 1055 Pg 15

83,839 Acres #17706  
 Remainder

APPROVED	
LORAIN CO.	
MAP DEPT.	
DATE	9-30-87
PAGE	14-C
BY	C. FRANCIS
VOID AFTER	17706

IP's fd or set

John Poznywak  
 Reg Surveyor  
 5292

Survey For Glen & Virginia Diamond  
 Part of Original Lot 37  
 Pittsfield Township  
 Lorain County Ohio  
 Scale 1" = 100' July 18, 1987