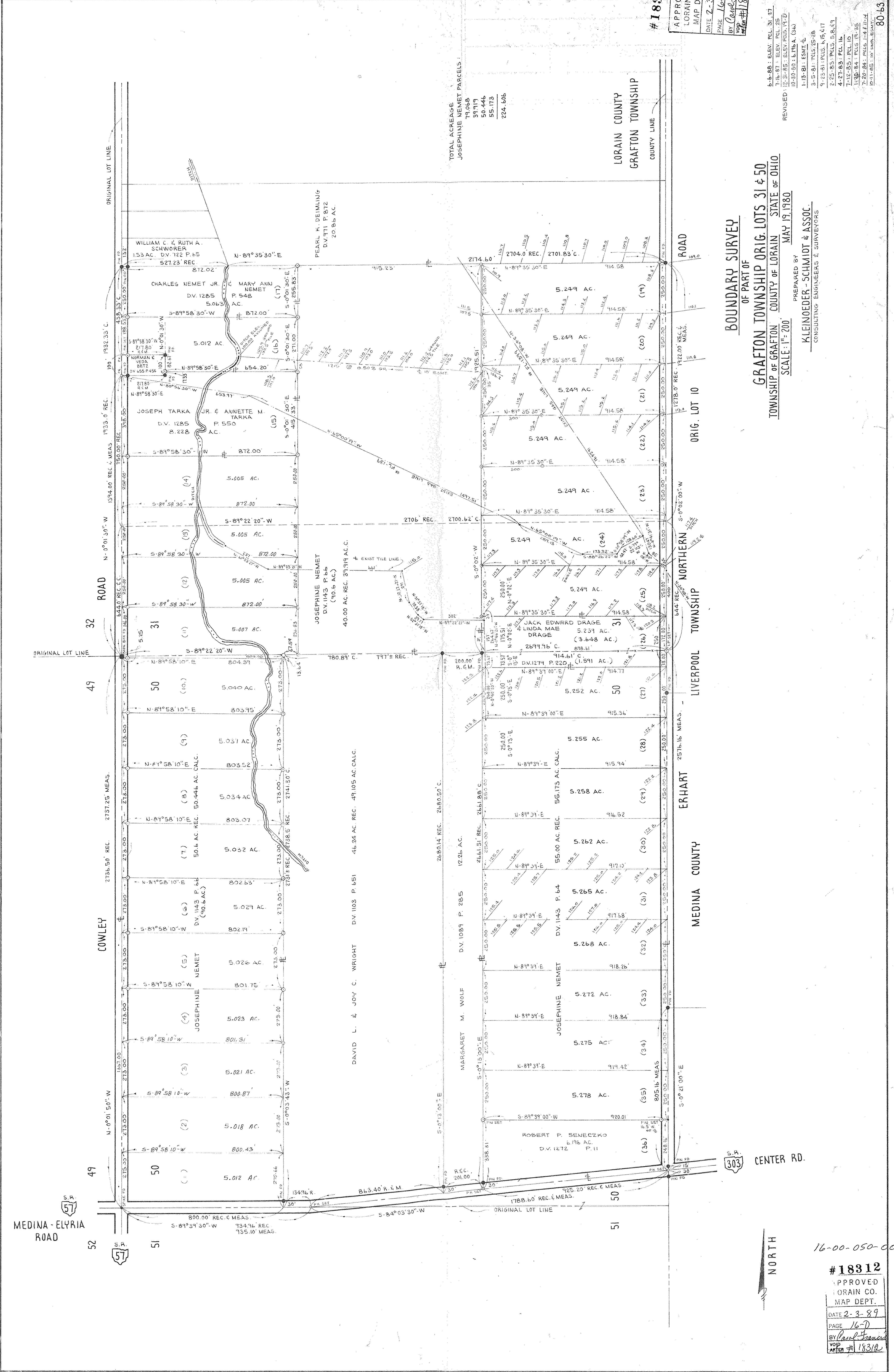


#18312

APPROVED  
LORAIN CO.  
MAP DEPT.  
DATE 2-3-89  
PAGE 16-D  
BY Carol J. Jones  
VOID AFTER #18312

6-5-88 - ELEV. P.C. 21.27  
7-18-87 - ELEV. P.C. 25  
10-30-85 - ELEV. P.C. 19.2  
11-18-81 - ELEV. P.C. 26  
3-5-81 - P.C. 25-26  
9-23-81 - P.C. 15, 17  
2-25-83 - P.C. 5, 8, 19  
4-27-83 - P.C. 18  
7-12-83 - P.C. 10  
1-25-84 - P.C. 19, 35  
7-20-84 - P.C. 14, 17  
10-11-85 - P.C. 10, 11, 12, 13, 14, 15, 16, 17, 18, 19, 20, 21, 22, 23, 24, 25, 26, 27, 28, 29, 30, 31, 32, 33, 34, 35, 36, 37, 38, 39, 40, 41, 42, 43, 44, 45, 46, 47, 48, 49, 50, 51, 52, 53, 54, 55, 56, 57, 58, 59, 60, 61, 62, 63, 64, 65, 66, 67, 68, 69, 70, 71, 72, 73, 74, 75, 76, 77, 78, 79, 80, 81, 82, 83, 84, 85, 86, 87, 88, 89, 90, 91, 92, 93, 94, 95, 96, 97, 98, 99, 100

80-63



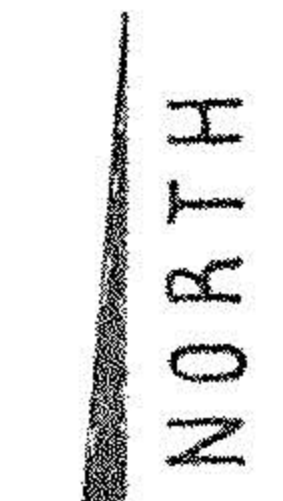
TOTAL ACREAGE  
JOSEPHINE NEMET PARCELS:  
74.068  
39.919  
50.446  
55.173  
224.606

LORAIN COUNTY  
GRAFTON TOWNSHIP  
COUNTY LINE

BOUNDARY SURVEY

OF PART OF  
GRAFTON TOWNSHIP ORIG. LOTS 31 & 50  
TOWNSHIP OF GRAFTON COUNTY OF LORAIN STATE OF OHIO  
SCALE: 1" = 200'

PREPARED BY  
KLEINOEDER - SCHMIDT & ASSOC.  
CONSULTING ENGINEERS & SURVEYORS



16-00-050-000

#18312

APPROVED  
LORAIN CO.  
MAP DEPT.  
DATE 2-3-89  
PAGE 16-D  
BY Carol J. Jones  
VOID AFTER #18312