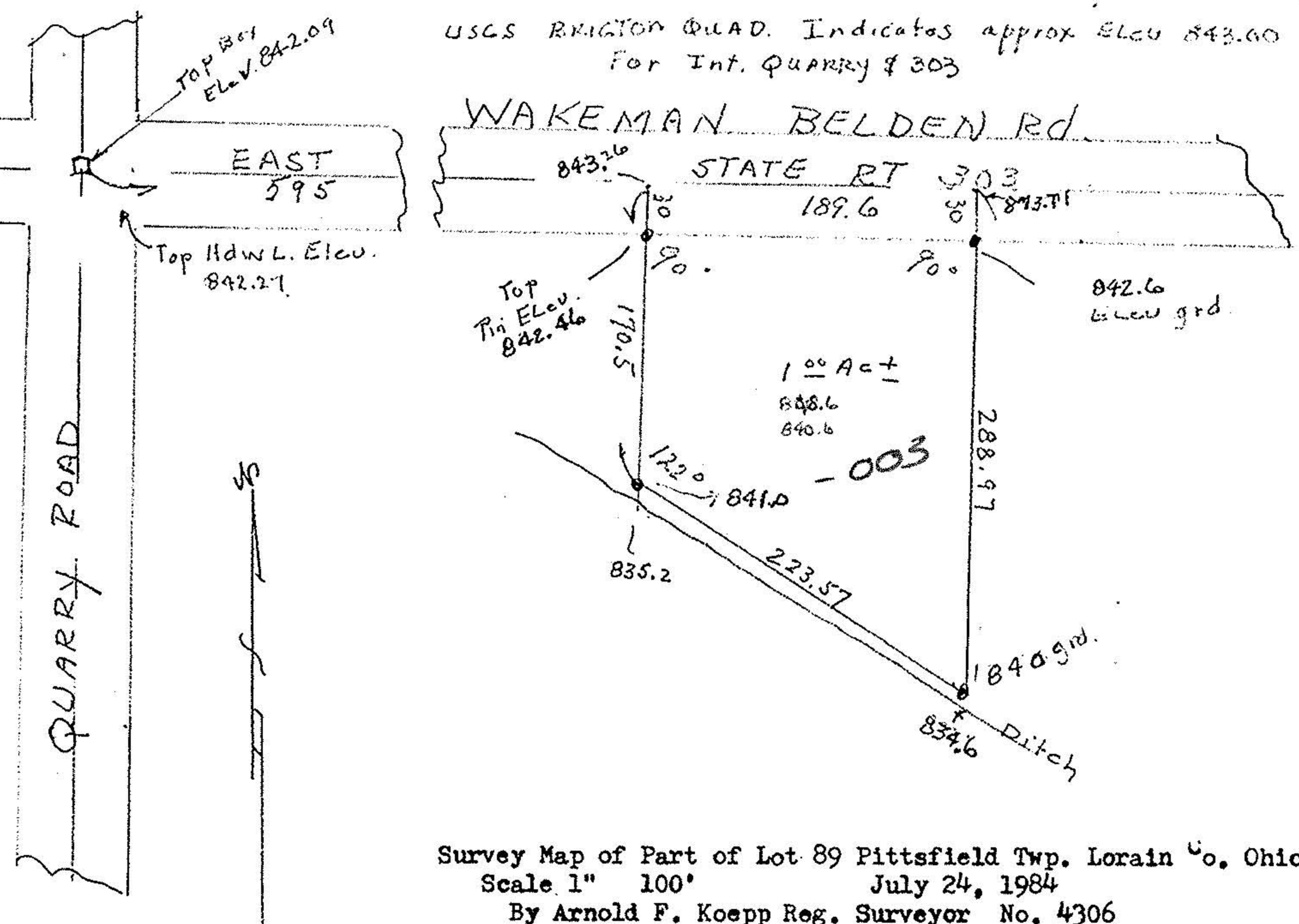


14-E
 O.L. 89
 #15790
 880-00-41
 14E

#15790

14 00-089-000

USCS BRIGTON QUAD. Indicates approx ELEV 843.60
 For Int. Quarry # 303



Survey Map of Part of Lot 89 Pittsfield Twp. Lorain Co., Ohio
 Scale 1" = 100' July 24, 1984
 By Arnold F. Koepf Reg. Surveyor No. 4306

#15790
 APPROVED
 LORAIN CO.
 MAP DEPT.
 DATE 9-7-84
 PAGE 14-E
 BY *Koepf*
 VOID AFTER 15790

B.M. USED
 U.S.G.S. ELEV. 871.00
 CORNER State Route 511 & 303
 S.W. Cor Church - NE. corner Church Bldg stamped 871.00

