

Daniel & V. Nesbett
 D.V. 906, Pg. 758
 96.55 Ac. Original
 2.881 Ac. Split
 93.669 Ac. Remainder

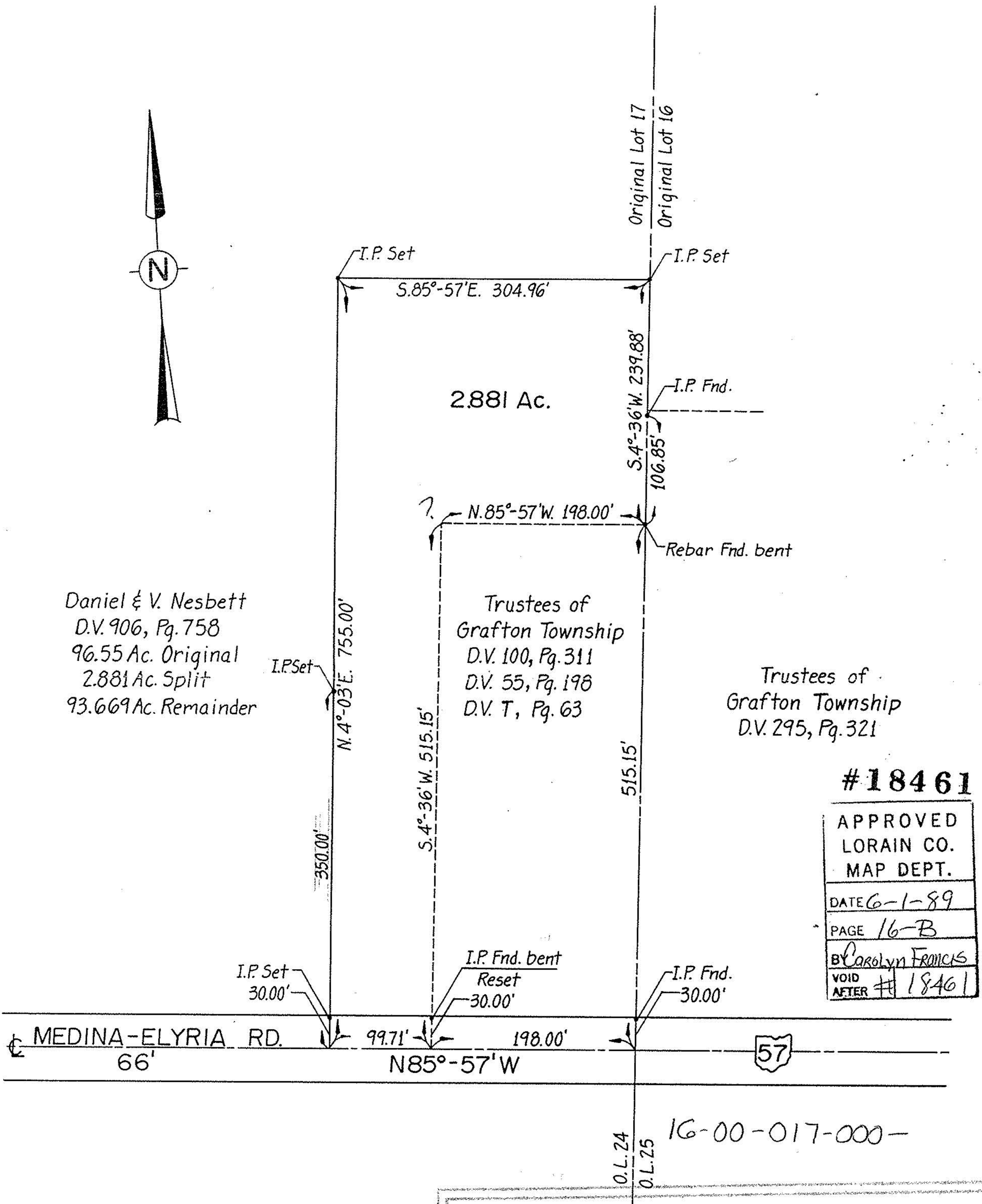
2.881 Ac.

Trustees of
 Grafton Township
 D.V. 100, Pg. 311
 D.V. 55, Pg. 198
 D.V. T, Pg. 63

Trustees of
 Grafton Township
 D.V. 295, Pg. 321

#18461

APPROVED LORAIN CO. MAP DEPT.
DATE 6-1-89
PAGE 16-B
BY Carolyn FRANCIS
VOID AFTER # 18461



O.L. 24
 O.L. 25
 16-00-017-000-

SURVEY OF
 2.881 ACRE ADDITION TO
 NESBETT CEMETERY
 ORIGINAL LOT 17
 GRAFTON TOWNSHIP
 LORAIN COUNTY, OHIO
 Kenneth P. Carney Sr. - County Engineer
 March, 1989
 Scale - 1" = 100'

#18461